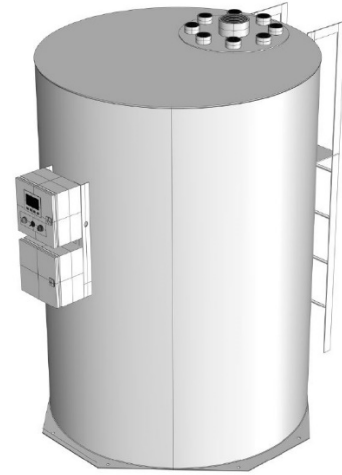


UM6c

UM6c:

Cylindrical Stainless Steel Tank for DEF

- Cylindrical Stainless Steel DEF Tanks with Optional Insulation and Containment
- Optional Temperature Controlled 45-75 F to Prevent DEF Degradation
- Accessories: Vent Caps, Direct Read Gauge, Inspect Port, Fill, Suction Pipe and Return Fittings
- C1 Tank Monitor Panel with High, Low, Leak Alarm, Output Relays, 4-20mA Analog Transmitter and Leak Sensor



Tank Specification	Stainless Steel Cylindrical SW, DW, or DWI Tank Temperature Controlled
Controller	C1 Control Panel
Power	230 VAC, 1P, 50-60 Hz
Interface	Power ON Light Analog Level Display Alarm Light Hi-Lo-Leak Modbus to BMS
Output Relays (Dry Contact)	High and Low Level Leak Alarm Common Alarm
Standard Accessories	Vent Caps, Level Indicator, Gauge Port, Analog Level and Leak Sensor, Temp Sensors
Enclosure	Stainless Steel Construction Bead Blast Finish DWI - Interior Insulation DW - Tank Containment

Model	GAL	DIAM IN	HEIGHT IN	OPER WT LBS
UM6c.300	300	36	70	3200
UM6c.400	400	36	92	4200
UM6c.500	500	48	64	5200
UM6c.600	600	48	78	6200
UM6c.800	800	48	104	8100
UM6c.1000	1000	60	82	10,000
UM6c.1200	1200	60	100	12,000
UM6c.1500	1500	72	86	15,000
UM6c.2000	2000	84	116	20,000
UM6c.3000	3000	84	126	29,000
UM6c.4000	4000	96	130	39,000

Other Equipment

Other Equipment	UM1 Simplex DEF Transfer Pumps UM2 Duplex DEF Transfer Pumps UM4 DEF Tank Fill System UM5 DEF Day Tanks Temperature Sensors and Control
------------------------	---