

RCE Series Actuators

With Engineered Resin Housing



SPECIFICATIONS

Model	RCE 15, RCE 30
Torque	150 – 300 in-lbs.
Voltage	120 VAC, 50/60 Hz
Conduit Entry	1/2" NPT
Max. Ambient Temp	150°F
Switches	2 Single pole, double throw (15 amp rating)

OPTIONS

- Limit Switches
Two additional limit switches may be mounted in the actuator for safely interlocking other equipment, such as pumps, compressors, mixers, or other valves
- Two-wire control of momentary contact actuation
- Voltages: 12, 24, 220 VAC; 12, and 24 VDC
- Feedback potentiometer: 0-1000 ohms
- 4-20 mA positioner
- Failsafe battery pack
- Heater and thermostat
- Mechanical brake for butterfly valves

FEATURES

- Reversing type motor
- Low cost/high quality quarter-turn electric actuators
- Corrosion proof/waterproof NEMA 4X engineered resin housing with stainless steel trim
- Compact design perfect for installations with space limitations
- Highly visible position indicator
- Large manual override handle is easy to see and use
- Auxiliary contacts for light indication
- ISO bolt circle



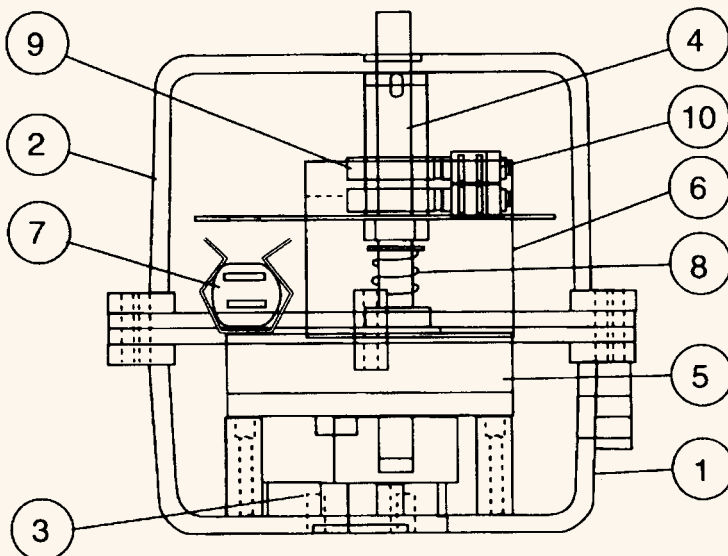
SAMPLE SPECIFICATIONS

All RCE Actuators shall be reversing type, capacitor run motor design, thermally protected with a permanently lubricated gear train. Actuator gearing, steel, self contained in a NEMA 4X enclosure, constructed of Zytel FR50 resin and stainless steel trim. Each actuator to have a manual override, visual position indication, ISO bolt circle.

ACTUATOR MODEL	TORQUE (in. lbs.)	VOLTAGES	DUTY CYCLE	CYCLE TIME (90 sec)	LOCKED ROTOR AMP DRAW	WEIGHT (lbs.)
RCE 15-5-4	150	115 VAC	100%	5	.5	6.6
RCE 30-5-4	300	115 VAC	75%	5	.75	6.6
RCE 15-5-4-8	150	230 VAC	100%	5	0.8	6.6
RCE 30-5-4-8	300	230 VAC	75%	5	0.8	6.6
RCE 15-5-4-6	150	12 VAC	75%	5	2.0	6.6
RCE 30-5-4-6	300	12 VAC	75%	5	2.0	6.6
RCE 15-5-4-7	150	24 VAC	75%	5	4.0	6.6
RCE 30-5-4-7	300	24 VAC	75%	5	4.0	6.6
RCE 15-5-4-4	150	12 VDC	75%	5	2.0	6.6
RCE 30-5-4-4	300	12 VDC	75%	5	2.0	6.6
RCE 15-5-4-5	150	24 VDC	75%	5	4.0	6.6
RCE 30-5-4-5	300	24 VDC	75%	5	4.0	6.6

NOTES: Duty cycles listed are for ambient temperature (73°F)

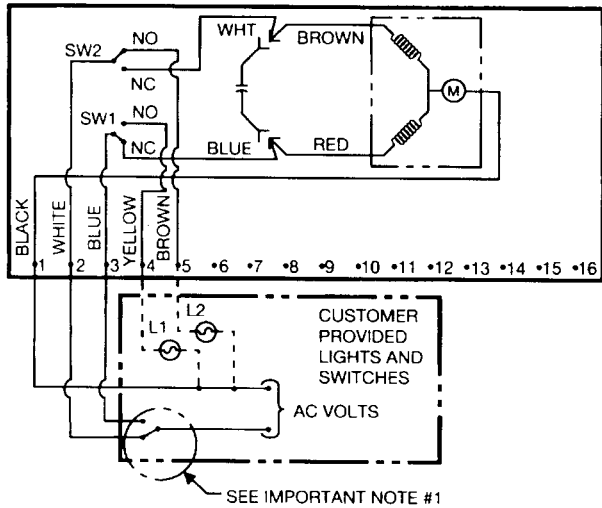
PARTS LIST



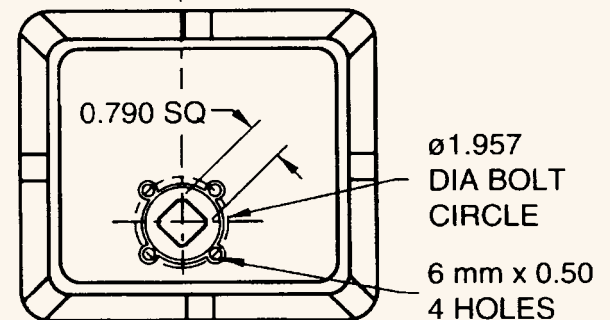
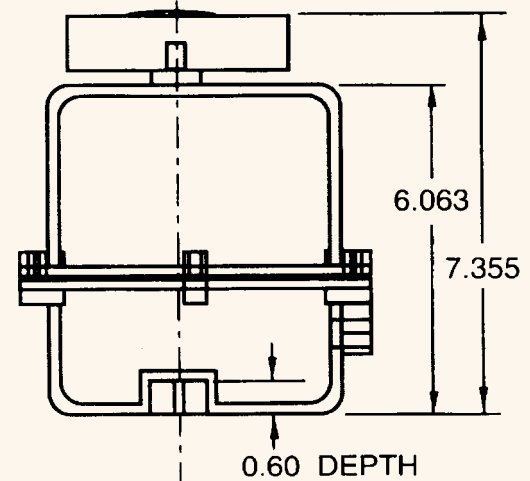
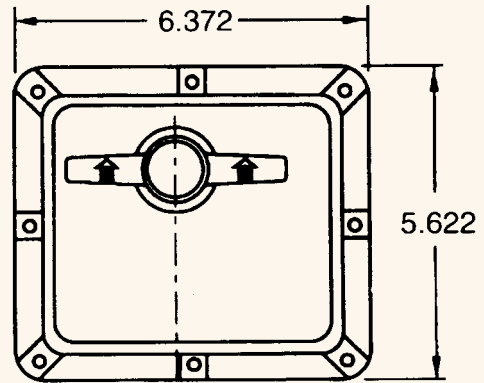
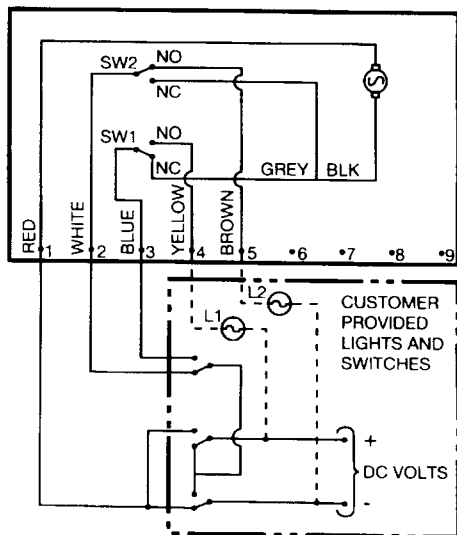
ITEM	PARTS
1	BASE
2	COVER
3	GEAR TRAIN
4	SHAFT
5	BASE PLATE
6	MOTOR
7	CAPACITOR
8	SPRING
9	CAM
10	LIMIT SWITCH

MOUNTING DIRECTIONS

AC WIRING



DC WIRING



NOTES:

1. EACH ACTUATOR MUST BE POWERED THRU ITS OWN INDIVIDUAL SWITCH CONTACTS TO AVOID CROSS FEED.
2. WIRING AS SHOWN IS FOR RCE 15 AND RCE 30.
3. MOTOR HAS A THERMAL PROTECTOR AS SHOWN BY M IN DIAGRAM
4. ACTUATOR SHOWN IN COUNTER-CLOCKWISE EXTREME OF TRAVEL, OR "OPEN" POSITION.

REMOTE CONTROL MODEL CODING

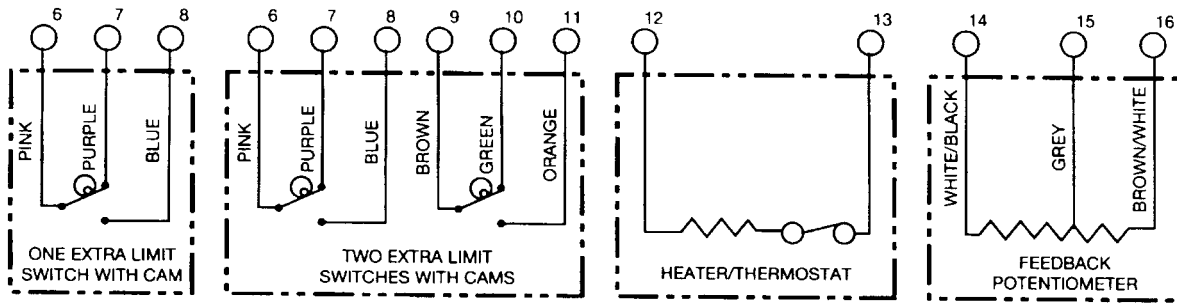
RCE: REMOTE CONTROL ELECTRIC

- 15: TORQUE RATING

- 5: STROKE TIMING

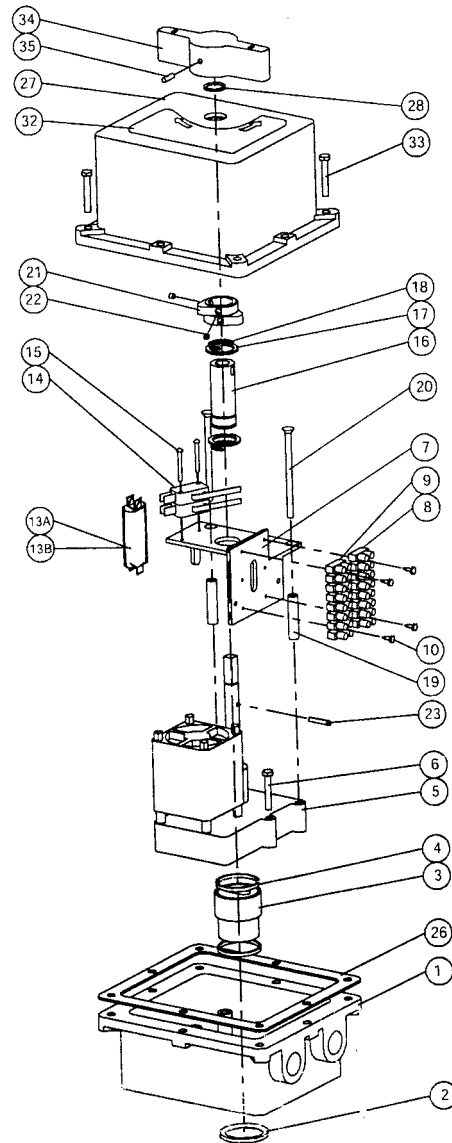
- 4: NEMA RATING

ACTUATOR OPTIONS



ITEM#	PART#	QTY.	DESCRIPTION
1	7403002	1	Base
2	7403000	1	Base Seal
3	7403017	1	Output Coupling
4	7403005	2	Coupling Gasket
5	7403004	1	Motor
6	7403022	2	Motor Screw
7	7403011	1	Base Plate
8	7401420	1	Terminal Block 1-8
9	7401425	1	Terminal Block 9-16
10	7401600	4	Terminal Block Screw
13A	7401948	1	4.2 mF Capacitor-A94
13B	7402004	1	6.7 mF Capacitor-B94
14	7401460	2	Limit Switch
15	7401620	2	Limit Switch Screw
16	7403016	1	Outer Shaft
17	7403006	2	Outer Shaft Gasket
18	7403009	2	Retaining Ring
19	7403018	2	Standoff
20	7403014	2	Base Plate Screw
21	7401480	2	Cam
22	7401740	4	Cam Screw
23	7403010	1	Pin
24*	7403023	1	2pc Harness
25*	7403015	1	4pc Harness
26	7403007	1	Base Gasket
27	7403001	1	Cover
28	7403020	1	Cover Seal
29*	7403019	1	Wire Diagram Label
30*	7403025	1	Option Label
31*	7403030	1	Quarter Master II Label
32	7403040	1	Override Label
33	7403032	8	Cover Screw
34	7403003	1	Handle
35	7401700	1	Handle Screw

PARTS LIST



* Not shown on diagram