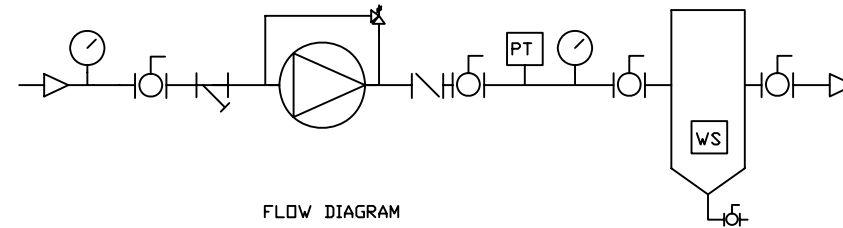


ITEM	QTY	PART	MAKE	DESCRIPTION
1	1		NAPCO	WELDED BASE WITH PANEL BRACKET
2	1	475	VIKING	FUEL PUMP
3	1		COM	ELECTRIC MOTOR - TEFC
4	1		EARTHSAFE	PUMP MOUNT BRACKET
5	1		COM	VACUUM GAUGE 2.5" DIAM -30 TO +30, 0.25" NPT THRD
6	1		COM	PRESSURE GAUGE 2.5" DIAM 0 TO +100, 0.25" NPT THRD
7	4		SHARPE	BALL VALVE 3 PIECE CARBON STEEL
8	1		EARTHSAFE	CHECK VALVE
9	1		EARTHSAFE	STRAINER WITH 0.25" DRAIN
10	2		EARTHSAFE	PUMP ADAPTER PIPE ASSEMBLY
11	2		EARTHSAFE	PUMP INLET - OUTLET PIPE ASSEMBLY
12	1		EARTHSAFE	PUMP - FILTER CONNECT PIPE
13	1	C800	EARTHSAFE	OMNIPLEX CONTROLLER
14	1	C230	EARTHSAFE	PUMP MOTOR STARTER WITH CURRENT SENSORS
15	1	LS750	GEMS	LEAK SENSOR
16	1		EARTHSAFE	FILTER BRACKET
17	1	FBD 14	RACOR	FILTER COALESACER
18	1		RACOR	FILTER WATER SENSOR
19	1		GEMS	FILTER DIFERENTIAL PRESSURE SENSOR



FILTER POLISHER Functional Description

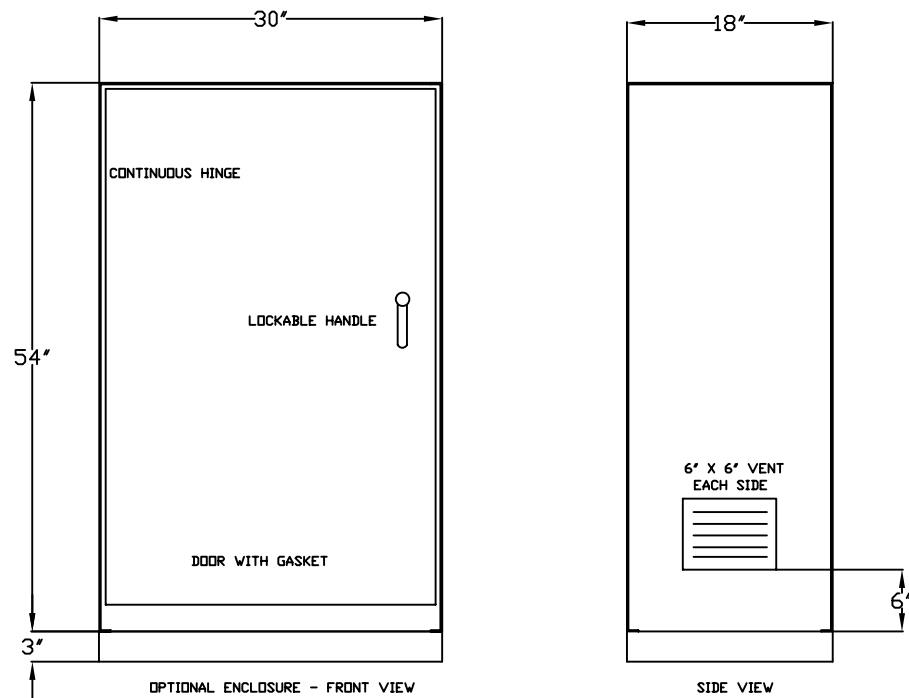
The control panel operates the pump on a programmable timed cycle to circulate fuel from the storage tank through the filter and returning to the storage tank. The programmable timer allows setting of the start time / date, the ON cycle time, and the OFF cycle time for the AUTO mode. The programmable controller allows setting of the cycle duration for the MAN mode, to start the pump upon manual initiation and stop it after the defined cycle.

The controller monitors the filter unit for high differential pressure indicating a need to change the filter and water accumulation. The leak sensor is monitored and disables the unit from operation in the MAN or AUTO mode.

The display indicates (a) normal or alarm condition, (b) cycle active status, (c) time to start / stop cycle, (d) alarm indication for differential pressure, water accumulation, or leak, (e) pump status. A common alarm output relay and a data interface are provided for BMS integration.

Specifications and Notes

1. Base and frame to be carbon steel welded construction. Frame to be carbon steel tube.
2. Piping to be schedule 40 carbon steel. Fittings to be mini-flange with teflon or viton gaskets and 150 PSI Rated.
3. Paint finish to be 2 coats industrial Epoxy. Color to be RAL 7035 Light Gray.
4. Wiring to be THHN stranded.



REV	DATE	BY	DESCRIPTION
A	1-1-08	BE	DESIGN DEVELOPMENT

REVISIONS

THIS DRAWING SHALL BE USED ONLY AS SPECIFIED BY CONTRACT. ANY OTHER USE, REPRODUCTION OR DISSEMINATION TO OTHERS WITHOUT WRITTEN PERMISSION IS PROHIBITED.

CONFIDENTIAL

ENGINEER APPROVAL BY:	DATE	
DRAWN BY:	BE	DATE 1-1-08
CHECKED BY:		DATE
SCALE	AS NOTED	

CLIENT	
PROJECT TITLE	
LOCATION	

SHEET TITLE	FILTER POLISHER UNIT	
SIZE	SHEET	NUMBER
D	M1	ES2008-M300