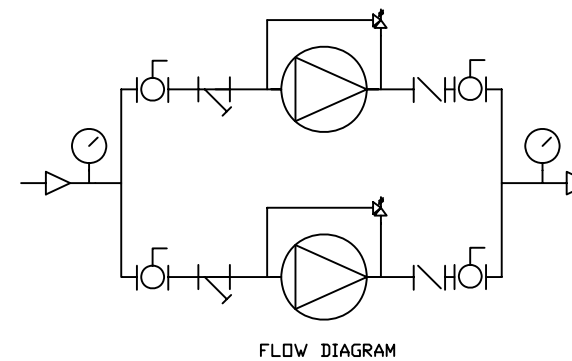


ITEM	QTY	PART	MAKE	DESCRIPTION
1	1		NAPCO	WELDED BASE WITH PANEL BRACKET
2	2	475	VIKING	FUEL PUMP
3	2		COM	ELECTRIC MOTOR - TEFC
4	2		EARTHSAFE	PUMP MOUNT BRACKET
5	1		COM	VACUUM GAUGE 2.5" DIAM -30 TO +30, 0.25" NPT THRD
6	1		COM	PRESSURE GAUGE 2.5" DIAM 0 TO +100, 0.25" NPT THRD
7	1		SHARPE	BALL VALVE 3 PIECE CARBON STEEL
8	2		EARTHSAFE	CHECK VALVE
9	2		EARTHSAFE	STRAINER WITH 0.25" DRAIN
10	2		EARTHSAFE	PUMP ADAPTER PIPE ASSEMBLY
11	2		EARTHSAFE	PUMP INLET - OUTLET PIPE ASSEMBLY
12	2		COM	1" THREADED CAP
13	1	C800	EARTHSAFE	OMNIPLEX CONTROLLER
14	1	C230	EARTHSAFE	DUAL PUMP MOTOR STARTER WITH CURRENT SENSORS
15	1	LS750	GEMS	LEAK SENSOR

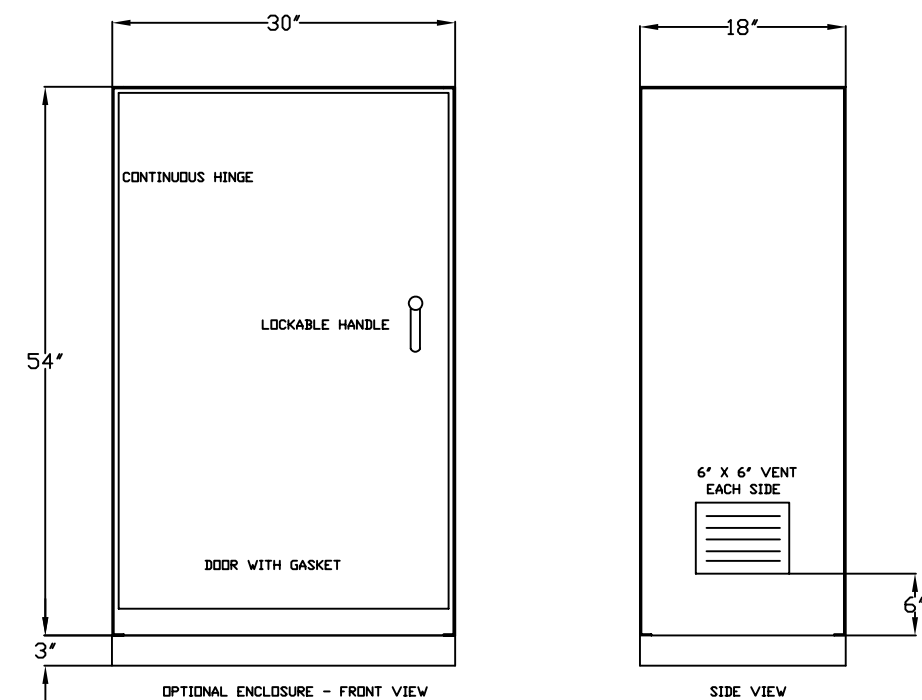


**DUPLEX PUMP Functional Description**

The duplex transfer pumps and control modules allow for ON, OFF, and AUTO operation for the pump set. The control panel receives a Pump ON signal from the generator day tank level controllers. The lead pump is activated; a flow sensor activates the lag pump if flow is not detected in 15 seconds. The pump OFF signal from the day tank level controllers de-activates the pump. The pump control panel alternates operation of Pump 1 and Pump 2 with each start.

**Specifications and Notes**

1. Base and frame to be carbon steel welded construction. Frame to be carbon steel tube.
2. Piping to be schedule 40 carbon steel. Fittings to be mini-flange with teflon or viton gaskets and 150 PSI Rated.
3. Paint finish to be 2 coats industrial Epoxy. Color to be RAL 7035 Light Gray.
4. Wiring to be THHN stranded.



REV	DATE	BY	DESCRIPTION
A	1-1-08	BE	DESIGN DEVELOPMENT

CONFIDENTIAL

THIS DRAWING SHALL BE USED ONLY AS SPECIFIED BY CONTRACT. ANY OTHER USE, REPRODUCTION OR DISCLOSURE TO OTHERS WITHOUT WRITTEN PERMISSION IS PROHIBITED.

ENGINEER APPROVAL BY:	DATE:	
DRAWN BY:	DATE:	1-1-08
CHECKED BY:	DATE:	
SCALE:	AS NOTED	

CLIENT:	
PROJECT TITLE:	

SHEET TITLE:	DUPLEX PUMP SET	
SIZE:	SHEET:	NUMBER:
D	M1	ES2008-M200