

BCE



Basic Pedestal Self Priming Centrifugal Pump Model 03E1-B Size 3" x 3"

PUMP SPECIFICATIONS

Size: 3" x 3" (76 mm x 76 mm) NPT - Female

Casing: Aluminum Alloy 319.

Maximum Operating Pressure 164 psi (1130 kPa).*

Enclosed Type, Five Vane Impeller: Almag No. 35.

Handles 5/8" (15,8 mm) Diameter Spherical Solids.

Impeller Shaft: Alloy Steel No. 4150M.

Replaceable Vane Plate: Gray Iron No. 30.

Pedestal: Gray Iron No. 30

Seal Plate: Aluminum No. 319-T6.

Shaft Sleeve: Alloy Steel No. 4130.

Radial and Thrust Bearings: Single Row Ball.

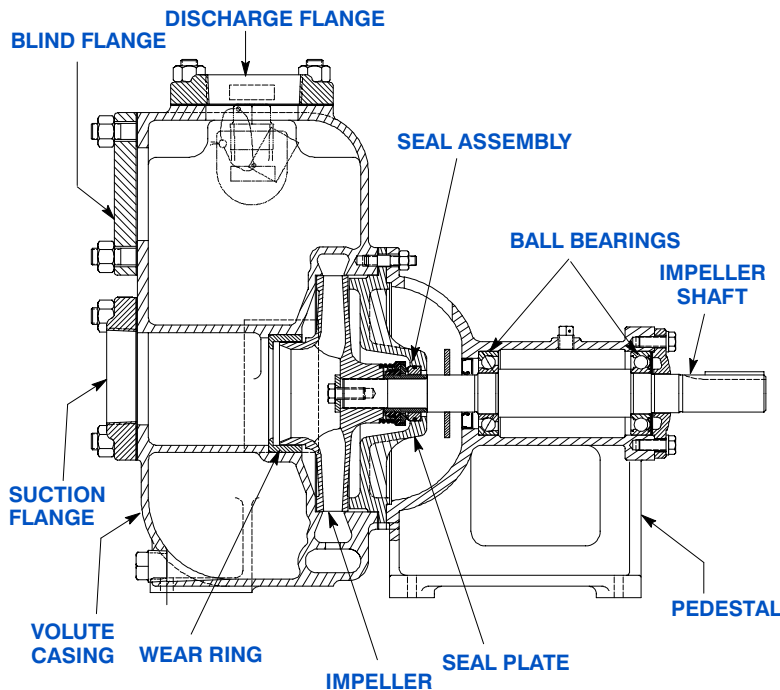
Bearing Lubrication: Grease.

Flanges: Aluminum No. 356-T6.

Gaskets: Composition Cork.

Hardware: Standard Plated Steel.

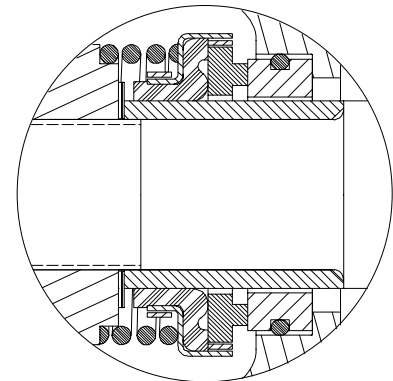
**Consult Factory for Applications Exceeding Maximum Pressure and/or Temperature Indicated.*



SEAL SPECIFICATION

Type 2 Mechanical, Self-Lubricated. Carbon Rotating Face. Ni-Resist Stationary Face. Fluorocarbon Elastomers (DuPont Viton® or Equivalent). Stainless Steel No. 18-8 Cage and Spring. Maximum Temperature of Liquid Pumped, 160°F (71°C).*

SEAL DETAIL



THE GORMAN-RUPP COMPANY • MANSFIELD, OHIO

GORMAN-RUPP OF CANADA LIMITED • ST. THOMAS, ONTARIO, CANADA

www.gormanrupp.com

Specifications Subject to Change Without Notice

Printed in U.S.A.

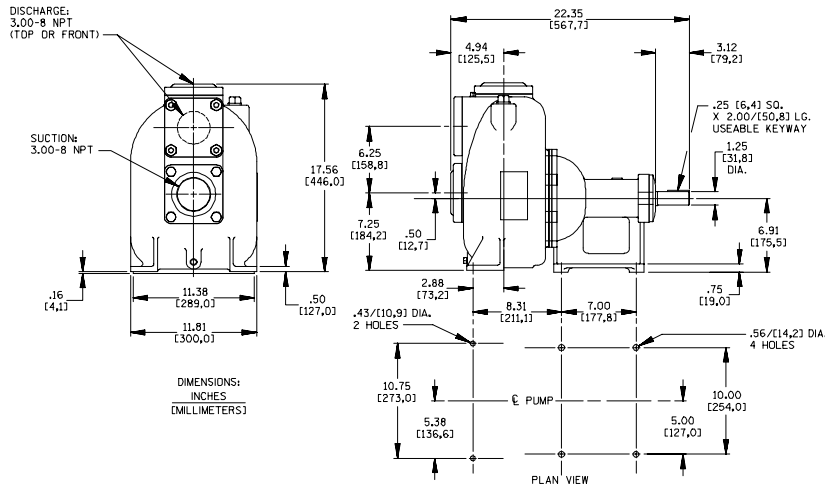
Specification Data

SECTION 30, PAGE 1400

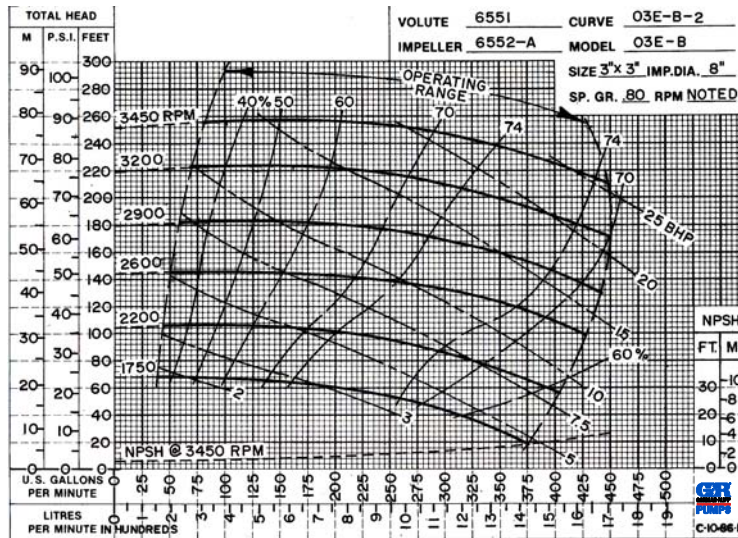
APPROXIMATE
DIMENSIONS and WEIGHTS

NET WEIGHT:
SHIPPING WEIGHT:
EXPORT CRATE:

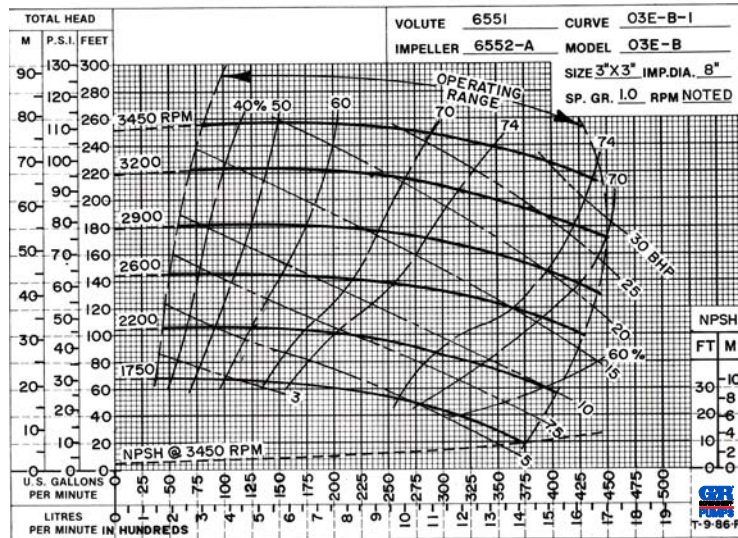
90 LBS. (40,8 KGS.)
101 LBS. (45,8 KGS.)
8.6 CU. FT. (0,24 CU. M.)



PERFORMANCE
BASED ON
PETROLEUM



PERFORMANCE
BASED ON
WATER



THE GORMAN-RUPP COMPANY • MANSFIELD, OHIO

GORMAN-RUPP OF CANADA LIMITED • ST. THOMAS, ONTARIO, CANADA

Specifications Subject to Change Without Notice

Printed in U.S.A.