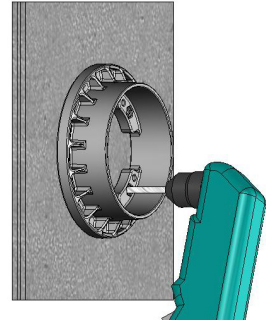


KFDF Kwik Fit Series (Fillable Boot) Installation Instructions

(For Double Walled Continuously Monitored Sumps)

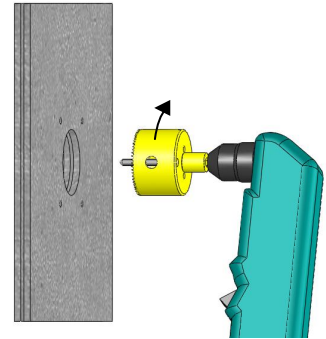
STEP 1

Using the KFD housing as a template, index the housing so the fill and vent holes are at the 12:00 o'clock position. Mark the bolt holes for drilling and locate and mark the center point for drilling the pipe hole.



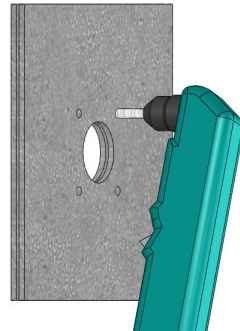
STEP 2

Using a hole saw, drill a hole in the sump that is the same size as the outside diameter of the secondary pipe. It is important to get the hole close to the pipe size.



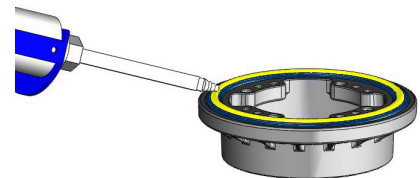
STEP 3

Drill the bolt holes out to 3/8" holes.



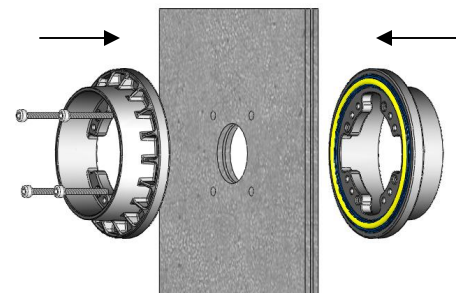
STEP 4

Apply a 1/4" bead of BLUE BOND 801 to the seal of both the internal and external housings just prior to installing the fittings. (Use care to ensure that there is no debris trapped between the sump wall and the housing seal. This can cause leaks in continuously monitored systems.)



STEP 5

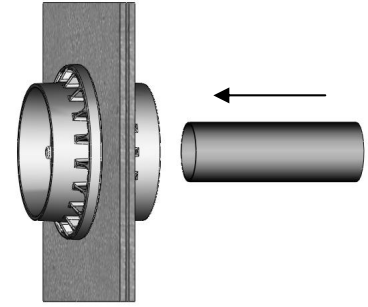
Insert the bolts into the interior housing through the center holes in the housing tabs and tighten until snug. Be careful to position the housings so that the fill and vent holes are located at the 12:00 o'clock position. Working in a star pattern, gradually tighten all the bolts to 65 inch lbs.



KFDF Kwik Fit Series (Fillable Boot) Installation Instructions (For Double Walled Continuously Monitored Sumps)

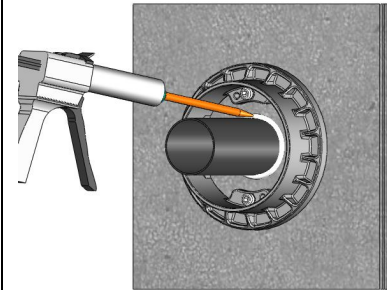
STEP 6

Install the pipe through the fitting.



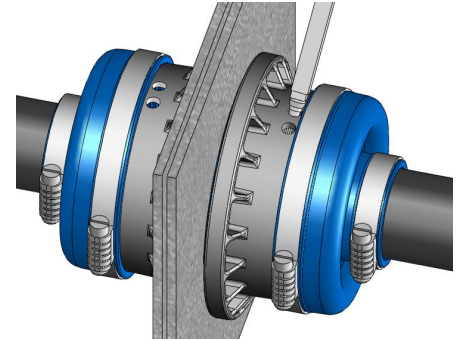
STEP 7

Run a bead of BLUE BOND 801 (Polyfusion for plastic pipe) along the seam formed between the sump wall and the secondary pipe. This will isolate the communication path from the sump interstitial to the pipe.



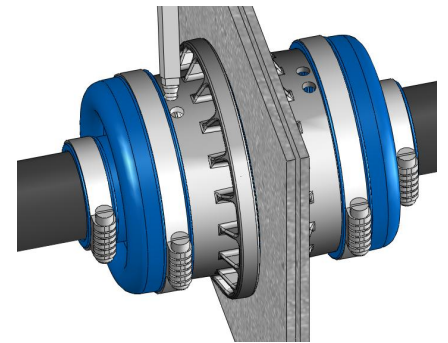
STEP 8

Install the interior and exterior flex boots. It is important to ensure that the pipe enters the fittings as straight as possible. The pipe to boot interface points should be cleaned and inspected for grooves or gouges. If there are surface imperfections, these should be sanded as smooth as possible. Fully seat the internal and external flex boots at the bottom and leave it flexed back at the top just enough to provide access to the fill and vent holes. Loosely clamp the boots in place for the filling stage.



STEP 9

Using BLUE FILL compound, fill the entire boot cavities of both the interior and exterior housings until the compound runs out of the vent holes. Work quickly as the material sets up in a few minutes. Make sure the boots are entirely filled.



STEP 10

Once the boots are filled, carefully loosen the clamps on both the internal and external boots and push the boots onto their fully seated positions on the housings. The boots should cover and seal the fill and vent holes. Tighten all the clamps to 65 inch lbs. Allow 24 hours before testing the system.

