



- APT XT Piping
- Fiberglass Tank & Under Dispenser Containment Sumps
- Double Wall Fiberglass Containment Sumps



US & Canada



Franklin Fueling Systems

Table of Contents

Pipe	
XP Pressure/Suction Product Piping	2-3
XP Marina/Above Ground Product Piping	4-5
4" Ducting	6-7
Fittings	
XP Clamshell Swivel Pipe Fittings	8
XP Clamshell Non-Swivel Pipe Fittings.....	9
XP Male Swage Swivel Pipe Fittings.....	10
Galvanized End Connections and Fittings	11-12
2" Vent Conversion Box Fittings.....	13
Tank Fitting Adapters	14
Termination Boots	
Flexible Entry Boots	15-16
Flexible Double Entry Boots.....	17-18
Flexible Bulkhead Boots	19-20
MD Series Flexible Entry Boots	21-22
Clamshell Secondary Test Boots	23
Swage Secondary Air Test Boot.....	24
APT Rigid Pipe-Boot Reference Chart & Diagram	25-26
Sumps	
Grade Level Transition Sleeve™	27-28
Below Grade Wall Transition Sleeve.....	29
Below Grade Transition Tank Sumps.....	30-31
Below Grade Intermediate Piping Sumps.....	32
Grade Level Transition Sump	33-34
4542-Series One-Piece Tank Sump.....	35-36
4736-Series One-Piece Tank Sump	37-38
Watertight Fiberglass Tank Sump Packages	39
Watertight Turbine Sump Packages	39-40
Watertight Sump Shield Packages	41
Fiberglass Replacement Parts	41
"Large Mouth" LM Series Dispenser Sump.....	42-43
LMT Sump Top List.....	44
Dispenser Sump Base List - Polyethylene.....	45
Single & Double Wall Fiberglass Dispenser Sumps	46-48
Dispenser Directory	
Large Mouth Fiberglass Dispenser Sumps	49-53
Installation Tools	
Installation Tools, Sealants and Lubricants	54
Double Wall Cutting Tool	55
Swage Machine.....	56
P-Series Fittings	
Clamshell Swivel Pipe Fittings.....	57-58
Clamshell Non-Swivel Pipe Fittings	59-60
Male Swage Swivel Pipe Fittings	61
Warranty	
APT Underground Product Warranty.....	62-64
APT Marina/Aboveground Product Warranty.....	65-67

XP Pressure/Suction Product Piping



The 1" size of APT piping can be used in both pressure and suction applications, and are ideal for providing remote feed and fill for heaters, boilers and emergency generators. The 1 1/2", 1 3/4" and 2" sizes of APT product piping can be used in both pressure and suction applications, and are ideal for underground service station fuel delivery systems. The D-series piping is a single wall direct bury piping, while the SC-series piping provides additional environmental security as a secondary contained direct bury pipe. Both feature controlled flexibility, even in low temperatures, permitting fast, easy installation.



Features & Benefits

Feature

- Nylon 12 construction throughout.

Benefit

- Time proven material that has been the primary layer of APT pipe for more than 12 years.
- Preferred fuel line material by the world's largest auto makers.
- No polyethylene.

Feature

- Layered piping construction of all high grade materials.

Benefit

- No possibility of piping layer delamination.

REEL SIZE	INCHES*	CM*
Small Standard	84" x 24" x 64.5"	213.3 x 60.9 x 163.8
Standard (Std.)	86" x 42.5" x 63.5"	218.4 x 107.9 x 161.2
Master	91" x 33" x 74"	231.1 x 83.8 x 187.9
Super Master (S. Mast.)	91" x 52" x 74"	231.1 x 132.1 x 187.9

*Reel Dia. x Width x Hub Dia.

Do not store piping in direct sunlight.

UL971 listed to the January 2004 standards.

MODEL	DESCRIPTION	FT.	REEL	WEIGHT	
				LBS.	KG.
XP-100-SC-250	1.00" Secondary Contained	250	Small	404	183
XP-100-SC-500		500	Small	516	234
XP-100-SC-2500		2,500	Std.	1,551	704
XP-100-D-250	1.00" Single Wall	250	Small	341	155
XP-100-D-500		500	Small	391	177
XP-150-SC-100	1.50" Secondary Contained	100	Small	346	157
XP-150-SC-250		250	Small	429	194
XP-150-SC-500		500	Small	566	257
XP-150-SC-1000		1,000	Std.	1,000	454
XP-150-SC-1800		1,800	Std.	1,416	642
XP-150-D-100	1.50" Single Wall	100	Std.	1,000	454
XP-150-D-250		250	Small	379	172
XP-150-D-500		500	Small	466	211
XP-150-D-1000		1,000	Std.	760	345
XP-150-D-1800		1,800	Std.	1,056	479
XP-175-SC-100	1.75" Secondary Contained	100	Std.	760	345
XP-175-SC-250		250	Master	454	206
XP-175-SC-500		500	Master	616	279
XP-175-SC-1200		1,200	S. Mast.	1,206	547
XP-175-D-100	1.75" Single Wall	100	Master	326	148
XP-175-D-250		250	Master	379	172
XP-175-D-500		500	Master	466	211
XP-175-D-1500		1,500	S. Mast.	951	431
XP-200-SC-100	2.00" Secondary Contained	100	Master	632	287
XP-200-SC-200		200	Master	742	337
XP-200-SC-350		350	Master	907	411
XP-200-SC-700		700	S. Mast.	1,490	676
XP-200-D-100	2.00" Single Wall	100	Master	597	271
XP-200-D-200		200	Master	672	305
XP-200-D-350		350	Master	785	356
XP-200-D-700		700	S. Mast.	1,245	565



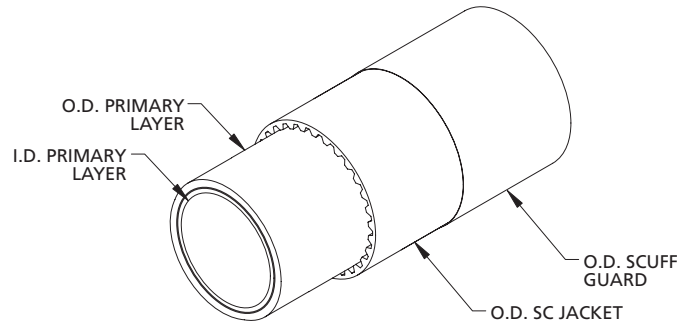


XP Pressure/Suction Product Piping

XP Piping Construction



XP Piping Dimensions



APT Pressure/Suction Pipe

MODEL	I.D. ± 0.010 PRIMARY LAYER	O.D. ± 0.020 PRIMARY LAYER	O.D. ± 0.030 SC JACKET	O.D. ± 0.030 SCUFF GUARD	MINIMUM BEND RADIUS
XP-100-D	1.000	1.270	N/A	N/A	36.00"
XP-100-SC	1.000	1.270	1.470	1.502	36.00"
XP-150-D	1.400	1.700	N/A	N/A	36.00"
XP-150-SC	1.400	1.700	1.900	1.925	36.00"
XP-175-D	1.650	1.950	N/A	N/A	36.00"
XP-175-SC	1.650	1.950	2.150	2.175	36.00"
XP-200-D	2.040	2.450	N/A	N/A	36.00"
XP-200-SC	2.040	2.450	2.650	2.675	36.00"

XP Marina/Aboveground Product Piping



APT Metallic Ducted (MD) pipe is the ideal choice for aboveground and marina fuel delivery systems. The MD series piping system contains our UL/ULC971 listed product piping inside a flexible UL360 listed metallic conduit. This superior construction adds fire protection, impact resistance and UV stability to what is already the highest quality piping system. The MD series pipe is shipped with single wall or secondary contained pipe already installed into the metallic jacket, reducing installation time in the field. For marinas, the flexibility of this product easily handles variation in water levels and can be installed alongside or under docks.

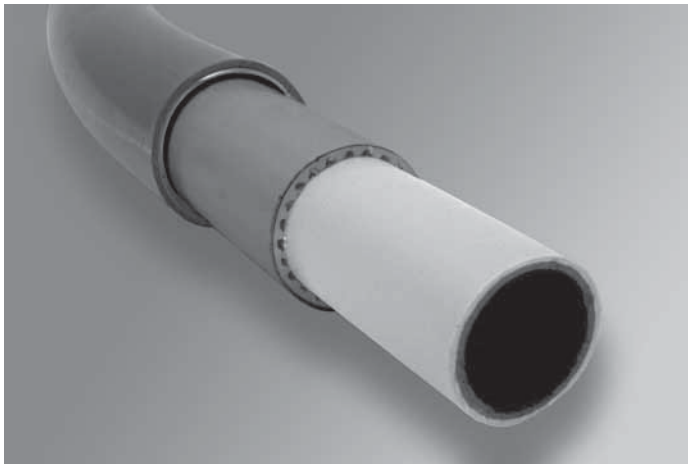
Features & Benefits

Feature

- UL360 listed metallic conduit.

Benefit

- Impact resistant.
- UV protection.
- Fire protection.

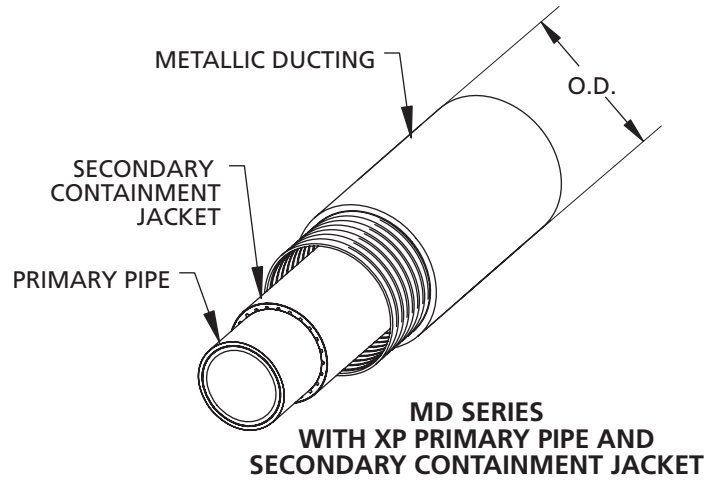
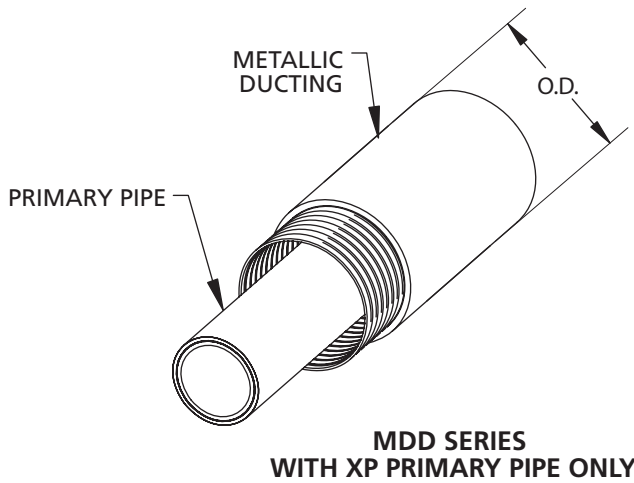


REEL SIZE	INCHES*	CM*
Small Standard	84" x 24" x 64.5"	213.3 x 60.9 x 163.8
Standard (Std.)	86" x 42.5" x 63.5"	218.4 x 107.9 x 161.2
Master	91" x 33" x 74"	231.1 x 83.8 x 187.9
Super Master (S. Mast.)	91" x 52" x 74"	231.1 x 132.1 x 187.9

*Reel Dia. x Width x Hub Dia.

MODEL	DESCRIPTION	FT.	REEL	WEIGHT	
				LBS.	KG.
XP-100-MD-250	1.00" Secondary Contained Inside Metallic Duct	250	Small	813	369
XP-100-MD-500	1.00" Secondary Contained Inside Metallic Duct	500	Std.	1,626	738
XP-100-MDD-250	1.00" Single Wall Inside Metallic Duct	250	Small	751	340
XP-100-MDD-500	1.00" Single Wall Inside Metallic Duct	500	Std.	1,501	681
XP-150-MD-250	1.50" Secondary Contained Inside Metallic Duct	250	Small	940	426
XP-150-MD-500	1.50" Secondary Contained Inside Metallic Duct	500	Std.	1,879	852
XP-150-MDD-250	1.50" Single Wall Inside Metallic Duct	250	Small	890	404
XP-150-MDD-500	1.50" Single Wall Inside Metallic Duct	500	Std.	1,779	807
XP-175-MD-250	1.75" Secondary Contained Inside Metallic Duct	250	Small	1,011	459
XP-175-MD-500	1.75" Secondary Contained Inside Metallic Duct	500	Std.	2,022	917
XP-175-MDD-250	1.75" Single Wall Inside Metallic Duct	250	Small	936	425
XP-175-MDD-500	1.75" Single Wall Inside Metallic Duct	500	Std.	1,872	849
XP-200-MD-200	2.00" Secondary Contained Inside Metallic Duct	200	Master	1,069	485
XP-200-MD-350	2.00" Secondary Contained Inside Metallic Duct	350	S. Mast.	2,083	944
XP-200-MDD-200	2.00" Single Wall Inside Metallic Duct	200	Master	999	453
XP-200-MDD-350	2.00" Single Wall Inside Metallic Duct	350	S. Mast.	1,871	849

XP Marina/Aboveground Product Piping

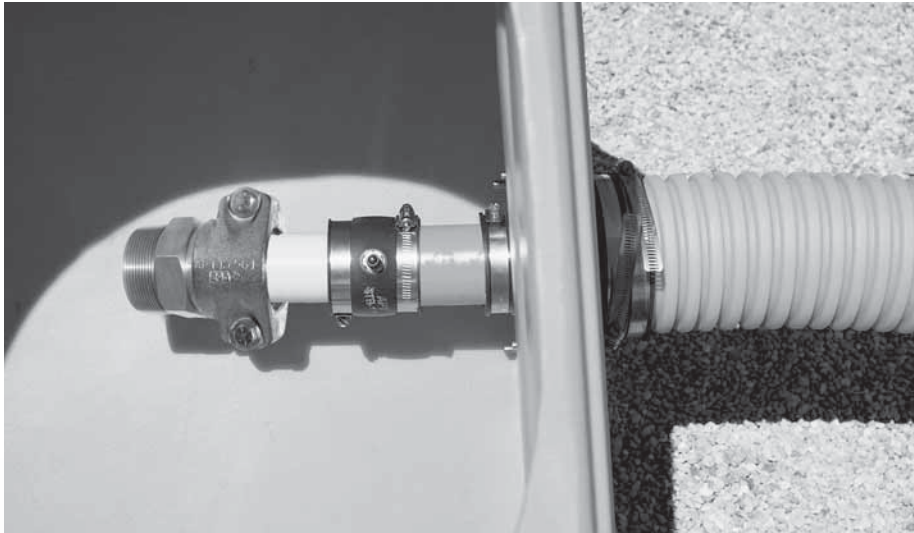


MODEL	DESCRIPTION	PRIMARY PIPE	DUCTING	DUCTING O.D.
XP-100-MD	1.00" Secondary Contained inside the Metallic Duct	XP-100-SC	MD-200	2.36"
XP-100-MDD	1.00" Single Wall inside the Metallic Duct	XP-100-D	MD-150	1.88"
XP-150-MD	1.50" Secondary Contained inside the Metallic Duct	XP-150-SC	MD-250	2.85"
XP-150-MDD	1.50" Single Wall inside the Metallic Duct	XP-150-D	MD-200	2.36"
XP-175-MD	1.75" Secondary Contained inside the Metallic Duct	XP-175-SC	MD-250	2.85"
XP-175-MDD	1.75" Single Wall inside the Metallic Duct	XP-175-D	MD-250	2.85"
XP-200-MD	2.00" Secondary Contained inside the Metallic Duct	XP-200-SC	MD-300	3.50"
XP-200-MDD	2.00" Single Wall inside the Metallic Duct	XP-200-D	MD-300	3.50"



4" Ducting

The APT Ducting System allows for pipe removal without extensive excavation. The 4" inside diameter of the DCT-400 ducting allows APT product piping to be easily slid through during installation or removal. Entries into sump walls are made with specially engineered ducted entry boots (DEB) or ducted bulkhead boots (DBB). The DCT-400 is used for retractability only, and does not serve as a containment layer.



Design Highlights & Advantages

- Ducted entry boots available for product pipe sizes 1" thru 2" single or secondary contained product piping.
- Ducted entry boots made from an oil and gasoline resistant nitrile rubber and employ stainless steel band clamps for maximum corrosion resistance.
- Entry boots can be serviced from the inside of the sump eliminating the need for sump excavation.
- Ducting is to be used for retractability only. Secondary containment is achieved by using APT secondary contained (SC) pipe.



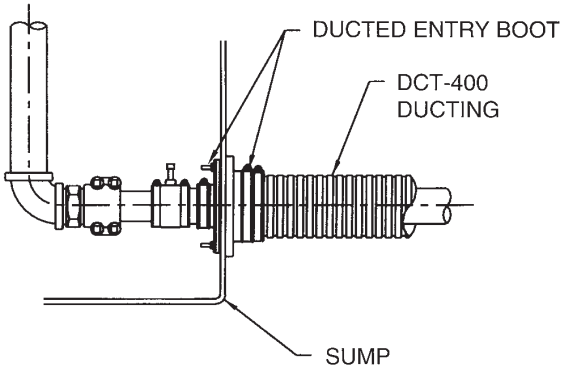
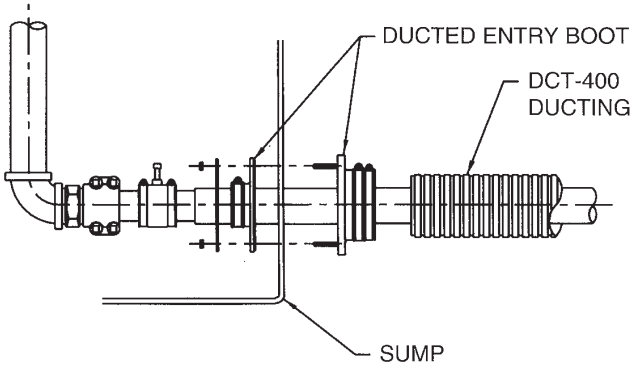
DCT-400-F

MODEL	DESCRIPTION	UNITS
DCT-400-100	4" Corrugated Ducting (for retractability only)	100 LF
DCT-400-250	4" Corrugated Ducting (for retractability only)	250 LF
DCT-400-F	Flexible ducting connector with clamps	EA

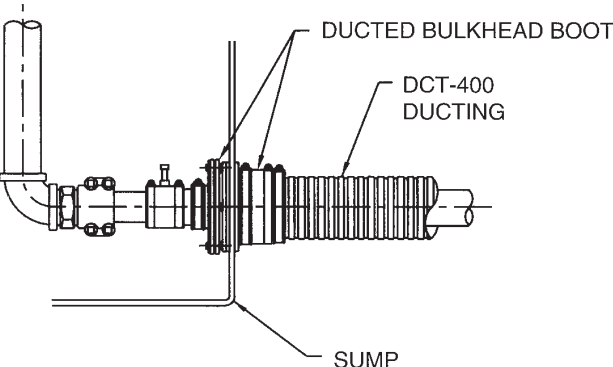
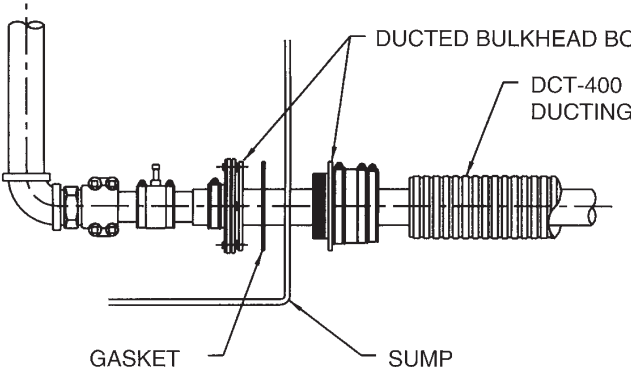


4" Ducting

System Using Ducted Entry Boot (DEB-XXX-XX)



System Using Ducted Bulkhead Boot (DBB-XXX-XX)





XP Clamshell Swivel Pipe Fittings

When using APT product piping, continuous runs eliminate the need for in-line joints. Installers make connections inside accessible containment sumps using APT's swivel fittings. These fittings are manufactured from solid brass or stainless steel with two Viton O-rings protected in grooves located on the inside of the connector. Plated clamps secure the fittings to the pipe. XP Series pipe clamps are labeled XP for easy identification.

Note: Use only XP Series fittings with XP piping.

Features & Benefits

Feature

- No special tools required.

Benefit

- No project delays when swage machine is inoperative.

Feature

- NPT Threads.

Benefit

- Fast and secure installation.
- Fittings available locally.
- Field proven.



Brass Swivels

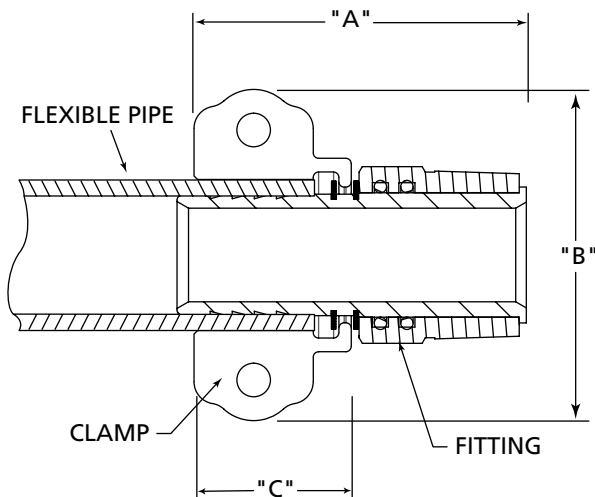
MODEL	DESCRIPTION
MS-XP-150-150	Installs on the end of 1 1/2" single/secondary contained XP pipe with 1 1/2" NPT
MS-XP-175-200	Installs on the end of 1 3/4" single/secondary contained XP pipe with 2" NPT
MS-XP-200-200	Installs on the end of 2" single/secondary contained XP pipe with 2" NPT

Stainless Steel Swivels

MODEL	DESCRIPTION
MS-XP-150-150SS	Installs on the end of 1 1/2" single/secondary contained XP pipe with 1 1/2" NPT
MS-XP-175-200SS	Installs on the end of 1 3/4" single/secondary contained XP pipe with 2" NPT
MS-XP-200-200SS	Installs on the end of 2" single/secondary contained XP pipe with 2" NPT

Male Swivel - XP Series

MODEL	DIM. "A"	DIM. "B"	DIM. "C"
MS-XP-150-150	4.00"	4.00"	1.75"
MS-XP-175-200	4.00"	4.00"	1.75"
MS-XP-200-200	4.50"	4.75"	2.25"



XP Clamshell Non-Swivel Pipe Fittings



APT non-swivel pipe fittings are constructed of one piece solid brass or stainless steel provide the same high quality and environmental security as the APT's swivel fittings, at a more economical price. XP Series clamps are blue and labeled XP for easy identification.

Note : Use only XP Series fittings with XP piping.



Features & Benefits

Feature

- One piece solid brass construction.

Benefit

- An economical fitting solution.

Feature

- NPT Threads.

Benefit

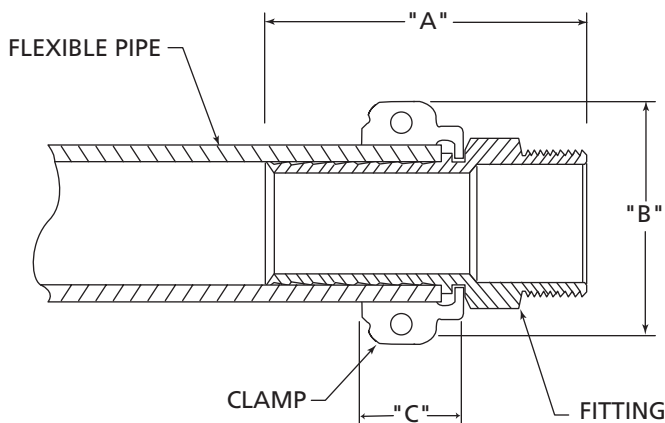
- Fast and secure installation.
- Fittings available locally.
- Field proven.

Brass Swivels

MODEL	DESCRIPTION
MN-XP-100-100	Installs on the end of 1" single/secondary contained single/secondary contained XP pipe with 1" NPT
MN-XP-150-150	Installs on the end of 1 1/2" single/secondary contained XP pipe with 1 1/2" NPT
MN-XP-175-200	Installs on the end of 1 3/4" single/secondary contained XP pipe with 2" NPT
MN-XP-200-200	Installs on the end of 2" single/secondary contained XP pipe with 2" NPT

Stainless Steel Swivel

MODEL	DESCRIPTION
MN-XP-100-100SS	Installs on the end of 1" single/secondary contained single/secondary contained XP pipe with 1" NPT



Male Non-Swivel - XP Series

MODEL	DIM. "A"	DIM. "B"	DIM. "C"
MN-XP-100-100SS	3.00"	3.00"	1.50"
MN-XP-150-150	4.00"	3.75"	1.75"
MN-XP-175-200	4.00"	4.00"	1.75"
MN-XP-200-200	4.25"	4.75"	2.25"





XP Male Swage Swivel Pipe Fittings

The APT innovative swage fitting is designed with the same proven technology as our clamshell fittings. Compatible with APT 1 1/2", 1 3/4" and 2" single and secondary containment piping using standard NPT connection fittings. Manufactured of stainless steel, the APT swage fitting is reliable, easy to install and requires no specialized connection tees or elbows. "XP ONLY" is permanently etched on each SS collar for easy identification.

Note: Use only XP Series fittings with XP piping.



Features & Benefits

Feature

- Stainless steel construction.

Benefit

- Wide range of fluid compatibility.

Feature

- Knurled surface.

Benefit

- Easy to engage threads by hand and wrench tighten.

Feature

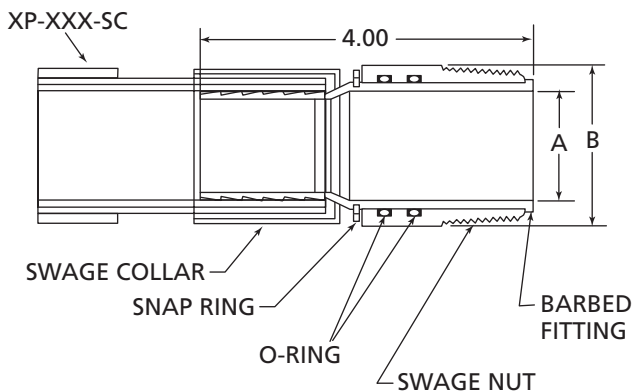
- NPT Threads.

Benefit

- Fast and secure installation.
- Fittings available locally.
- Field proven.

Design Highlights & Advantages

- Compatible with standard 1 1/2" or 2" NPT threads.
- Swage fittings utilize the APT proven swivel and double Viton O-ring design similar to APT clamshell fittings.
- 100 psi rated working pressure.



MODEL	DESCRIPTION
MS-XP-SW-150-150	Installs on the end of 1 1/2" single/secondary contained XP pipe with 1 1/2" NPT
MS-XP-SW-175-200	Installs on the end of 1 3/4" single/secondary contained XP pipe with 2" NPT
MS-XP-SW-200-200	Installs on the end of 2" single/secondary contained XP pipe with 2" NPT

Male Swivel - XP Series

MODEL	DIM. "A"	DIM. "B"
MS-XP-SW-150	1.50"	2.00"
MS-XP-SW-175	1.75"	2.50"
MS-XP-SW-200	2.00"	3.00"



Galvanized End Connections and Fittings



One objective of APT is to utilize standard fittings whenever possible. Consequently, all APT swivel and non-swivel fittings are compatible with standard 1 1/2", 2", and 2 1/2" NPT plumbing fittings that can be purchased in your area. However, in order to better service our customers, APT offers galvanized fittings to fit most fuel delivery applications.

Design Highlights & Advantages

- Fittings are galvanized coated to prevent corrosion.
- Fittings are completely interchangeable with standard 1 1/2", 2" and 2 1/2" NPT fittings.



MODEL	DESCRIPTION
FFW-200	Five-Way fitting, 2.00" NPT
GC-150	Galvanized Cap, 1.50" NPT
GC-200	Galvanized Cap, 2.00" NPT
GE45-150	Galvanized Elbow, 45 degree, 1.50" NPT
GE45-200	Galvanized Elbow, 45 degree, 2.00" NPT
GE90-150	Galvanized Elbow, 90 degree, 1.50" NPT
GE90-200	Galvanized Elbow, 90 degree, 2.00" NPT
GE90-215	Galvanized Reducing Elbow, 90 degree, 2.00" NPT x 1.50" NPT
GE9-2515	Galvanized Reducing Elbow, 90 degree, 2.50" NPT x 1.50" NPT
GE90-252	Galvanized Reducing Elbow, 90 degree, 2.50" NPT x 2.00" NPT
GHB-150-100	Galvanized Hex Bushing, 1.50" NPT x 1.00" NPT
GHB-200-100	Galvanized Hex Bushing, 2.00" NPT x 1.00" NPT
GHB-200-150	Galvanized Hex Bushing, 2.00" NPT x 1.50" NPT
GSE90-150	Galvanized Street Elbow, 90 degree, 1.50" NPT
GSE90-200	Galvanized Street Elbow, 90 degree, 2.00" NPT
GSHP-150	Galvanized Square Head Plug, 1.50" NPT
GSHP-200	Galvanized Square Head Plug, 2.00" NPT
GT-150	Galvanized Tee, 1.50" NPT
GT-200	Galvanized Tee, 2.00" NPT
GT-215	Galvanized Reducing Tee, 2" x 2" x 1.50" NPT
GT-225	Galvanized Reducing Tee, 2" x 2" x 2.50" NPT
GT-2515	Galvanized Reducing Tee, 2.5" x 2.5" x 1.5" NPT
GT-252	Galvanized Reducing Tee, 2.5" x 2.5" x 2" NPT
GU-150	Galvanized Union, 1.50" NPT
GU-200	Galvanized Union, 2.00" NPT



Galvanized End Connections and Fittings

Galvanized Elbows

MODEL	DESCRIPTION
GE45-150	Galvanized Elbow, 45°, 1.50" NPT
GE45-200	Galvanized Elbow, 45°, 2.00" NPT
GE90-150	Galvanized Elbow, 90°, 1.50" NPT
GE90-200	Galvanized Elbow, 90°, 2.00" NPT
GE90-215	Galvanized Reducing Elbow, 90°, 2.00" NPT x 1.50" NPT
GE90-2515	Galvanized Reducing Elbow, 90°, 2.50" NPT x 1.50" NPT
GE90-252	Galvanized Reducing Elbow, 90°, 2.50" NPT x 2.00" NPT
GSE90-150	Galvanized Street Elbow, 90°, 1.50" NPT
GSE90-200	Galvanized Street Elbow, 90°, 2.00" NPT



Galvanized Tees

MODEL	DESCRIPTION
GT-150	Galvanized Tee, 1.50" NPT
GT-200	Galvanized Tee, 2.00" NPT
GT-215	Galvanized Reducing Tee, 2.00" x 2.00" x 1.50" NPT
GT-225	Galvanized Reducing Tee, 2.00" x 2.00" x 2.50" NPT
GT-2515	Galvanized Reducing Tee, 2.50" x 2.50" x 1.50" NPT
GT-252	Galvanized Reducing Tee, 2.50" x 2.50" x 2.50" NPT
FFW-200	Galvanized Five-Way Fitting, 2.00" NPT



Galvanized Caps

MODEL	DESCRIPTION
GC-150	Galvanized Cap, 1.50" NPT
GC-200	Galvanized Cap, 2.00" NPT



Galvanized Unions

MODEL	DESCRIPTION
GU-150	Galvanized Union, 1.50" NPT
GU-200	Galvanized Union, 2.00" NPT



Galvanized Bushings

MODEL	DESCRIPTION
GHB-150-100	Galvanized Hex Bushing, 1.50" NPT x 1.00" NPT
GHB-200-100	Galvanized Hex Bushing, 2.00" NPT x 1.00" NPT
GHB-200-150	Galvanized Hex Bushing, 2.00" NPT x 1.50" NPT



Galvanized Plugs

MODEL	DESCRIPTION
GSHP-150	Galvanized Square Head Plug, 1.50" NPT
GSHP-200	Galvanized Square Head Plug, 2.00" NPT

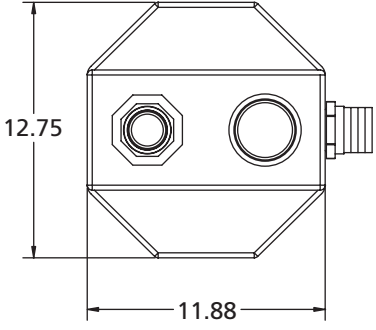


2" Vent Conversion Box Fittings

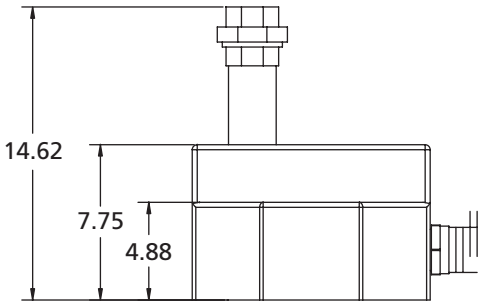


VCF-200 Vent Box can be used along with XP-Series Single Wall Pipe for use in venting tanks.

MODEL	DESCRIPTION
VNC-200	2.00" Nylon Male Nipple
V90-200	2.00" Nylon Barbed Elbow
VT-200	2.00" Nylon Barbed Tee
VCF-200	Vent Conversion Box with 2" Nylon Nipple and 2" galvanized riser with Union



**VCF-200 VENT/VAPOR BOX
(REF. ONLY)**





Tank Fitting Adaptors

APT tank fitting adaptors provide a high quality, cost effective way to mount tank sumps to a standard 4" NPT tank opening or 6" NPT tank opening. The bright zinc plated cast iron construction is not only strong, but corrosion resistant.

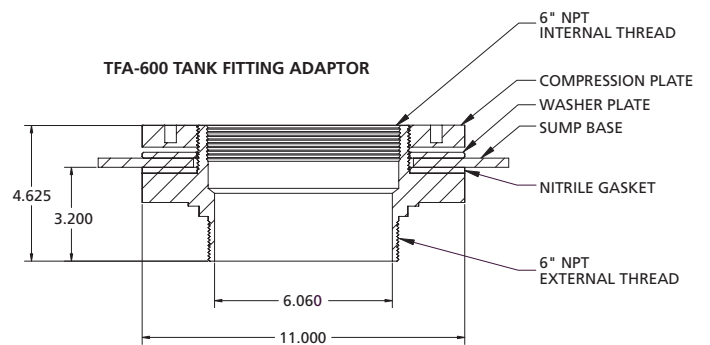
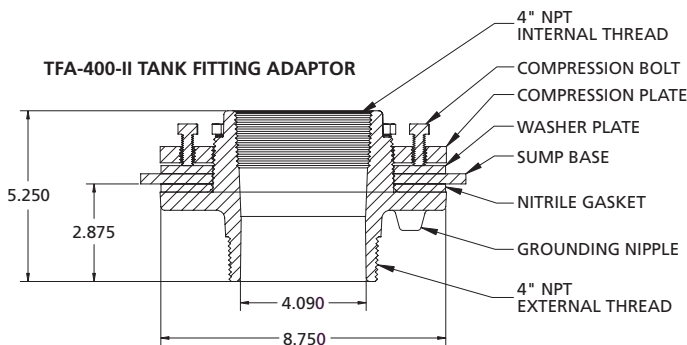
The TFA-400-II and TFA-600 is easy to install and its single hole style mounting allows the sump to be rotated to properly align pipe entries.



Design Highlights & Advantages

- Easy installs with standard tools.
- TFA-400-II fits onto a standard 4" NPT tank riser pipe with 4" NPT internal threads for mounting a submersible pump.
- TFA-600 fits onto a standard 6" NPT tank riser pipe with 6" NPT internal threads for mounting a submersible pump.
- Installs through one hole in the sump base, which permits the sump to be rotated on the adapter to properly align pipe penetrations.
- Compression ring design allows installation with a solid gasket ring to ensure a water-tight seal and environmental security.

MODEL	DESCRIPTION
TFA-400-II	Tank Fitting Adapter generation II, 4.00" NPT
TFA-600	Tank Fitting Adapter, 6.00" NPT
411-105-02	Compression plate for TFA-400-11
420-200-02	Plate Washer TFA-400-11
446-100-02	Gasket for TFA-400-11





Flexible Entry Boots

APT flexible entry boots are a two-piece boot that doubles the sealing power of your entry boot. Stainless steel studs and corrosion resistant nuts and washer plates make for the highest quality entry boot. APT offers a complete line of sizes for 1/2" thru 4" single and secondary containment pipe. The 1 1/2" thru 2 1/2" sizes are also available in a ducted boot version to accommodate the use of APT's DCT-400 corrugated ducting for easy retractability.



Design Highlights & Advantages

- Designed to be used with APT product piping, the entry boots are also ideal for use with rigid piping and electrical conduits.
- Flexible entry boots available in sizes from 1/2" through 4".
- Ducted entry boots available in sizes from 1 1/2" through 2 1/2". APT offers these ducted entry boots in an air testable version for easy testing of the 4" corrugated ducting.
- Boot size designations correspond directly to the pipe size being used.
- Any boot for a single wall pipe can be converted to a boot for a double wall pipe by simply removing the insert in the pipe opening.
- Entry boot can be serviced from inside the sump eliminating the need for sump excavation.
- Made from oil and gasoline resistant nitrile rubber.
- Will work on round sumps of 36" or larger diameter.

MODEL	DESCRIPTION
FEB-050-D	Flexible Entry Boot for 1/2" electrical conduit
FEB-050-SC	Flexible Entry Boot for 3/4" electrical conduit
FEB-075-D	Flexible Entry Boot for 3/4" and 1" electrical conduit
FEB-075-SC	Flexible Entry Boot for 1" electrical conduit
FEB-100-D	Flexible Entry Boot for XP-100-D
FEB-100-SC	Flexible Entry Boot for XP-100-SC
FEB-150-D	Flexible Entry Boot for XP-150-D
FEB-150-SC	Flexible Entry Boot for XP-150-SC
FEB-175-D	Flexible Entry Boot for XP-175-D
FEB-175-SC	Flexible Entry Boot for XP-175-SC and 2" Single Wall Fiberglass
FEB-200-D	Flexible Entry Boot for XP-200-D
FEB-200-SC	Flexible Entry Boot for XP-200-SC
FEB-250-SC	Flexible Entry Boot for XP-250-SC
FEB-300-R	Flexible Entry Boot for R-300-D and 3" Single Wall Fiberglass
FEB-400-R	Flexible Entry Boot for R-400-D and 4" Single Wall Fiberglass
FEB-400-F	Flexible Entry Boot for 4" Double Wall Pipe

MODEL	DESCRIPTION (DUCTED)
DEB-250-SC	Ducted Entry Boot for P-250-SC

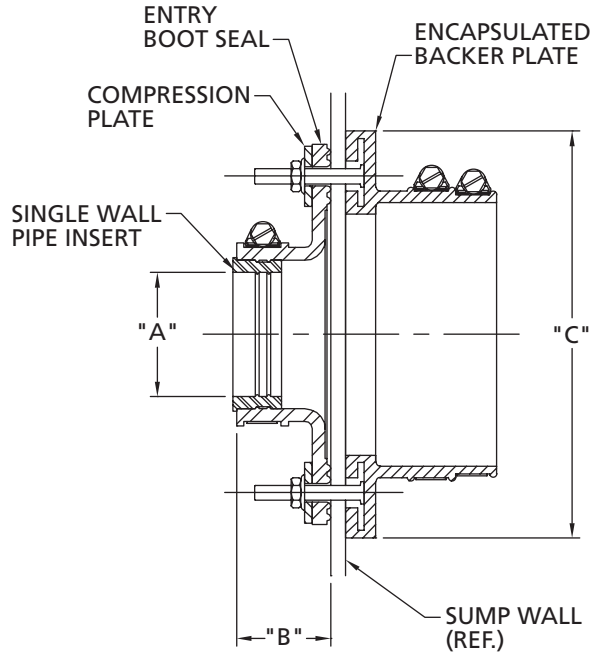
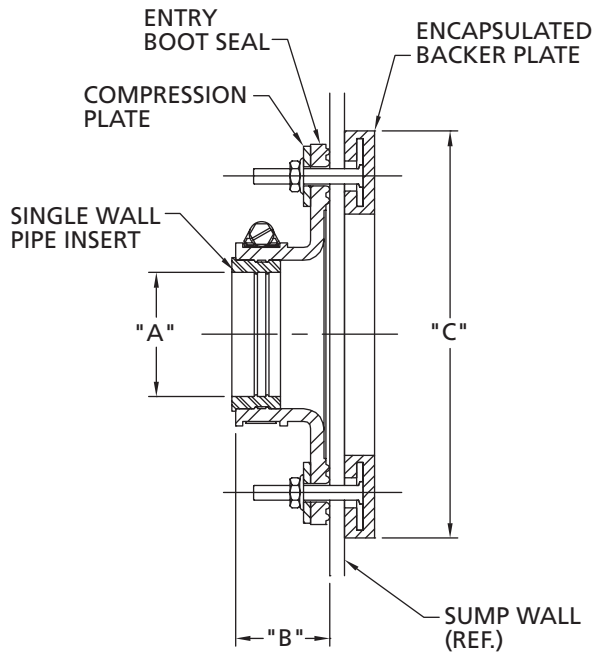
MODEL	DESCRIPTION (AIR TESTABLE)
DEB-150-DA	Ducted Entry Boot for XP-150-D
DEB-150-SCA	Ducted Entry Boot for XP-150-SC
DEB-175-DA	Ducted Entry Boot for XP-175-D
DEB-175-SCA	Ducted Entry Boot for XP-175-SC
DEB-200-DA	Ducted Entry Boot for XP-200-D
DEB-252-DA	Ducted Entry Boot for XP-200-SC and P-250-D
DEB-250-SCA	Ducted Entry Boot for P-250-SC

MODEL	DESCRIPTION (DUCTED)
DEB-150-D	Ducted Entry Boot for XP-150-D
DEB-150-SC	Ducted Entry Boot for XP-150-SC
DEB-175-D	Ducted Entry Boot for XP-175-D
DEB-175-SC	Ducted Entry Boot for XP-175-SC
DEB-200-D	Ducted Entry Boot for XP-200-D
DEB-200-SC	Ducted Entry Boot for XP-200-SC





Flexible Entry Boots



Flexible Entry Boots

MODEL	DIM. "A"	DIM. "B"	DIM. "C"	MTG HOLE SIZE	MTG STUDS
FEB-050-D	0.84"	1.50"	4.75"	2"	4
FEB-050-SC	1.05"	1.50"	4.75"	2"	4
FEB-075-D	1.05"	1.50"	4.75"	2"	4
FEB-075-SC	1.32"	1.50"	4.75"	2"	4
FEB-100-D	1.32"	1.50"	4.75"	2"	4
FEB-100-SC	1.70"	1.50"	4.75"	2"	4
FEB-150-D	1.75"	1.50"	6.75"	3 1/2"	8
FEB-150-SC	2.00"	1.50"	6.75"	3 1/2"	8
FEB-175-D	2.00"	1.50"	6.75"	3 1/2"	8
FEB-175-SC	2.40"	1.50"	6.75"	3 1/2"	8
FEB-200-D	2.50"	1.50"	6.75"	3 1/2"	8
FEB-200-SC	2.88"	1.50"	6.75"	3 1/2"	8
FEB-250-SC	3.24"	1.50"	6.75"	3 1/2"	8
FEB-300-R	3.50"	1.50"	6.75"	3 1/2"	8
FEB-400-R	4.50"	1.50"	8.00"	5 1/2"	10
FEB-400-F	4.94"	1.50"	8.00"	5 1/2"	10

Ducted Entry Boots

MODEL	DIM. "A"	DIM. "B"	DIM. "C"	MTG HOLE SIZE	MTG STUDS
DEB-150-D	1.75"	1.50"	6.75"	3 1/2"	8
DEB-150-SC	2.00"	1.50"	6.75"	3 1/2"	8
DEB-175-D	2.00"	1.50"	6.75"	3 1/2"	8
DEB-175-SC	2.40"	1.50"	6.75"	3 1/2"	8
DEB-200-SC	2.88"	1.50"	6.75"	3 1/2"	8
DEB-250-D	3.00"	1.50"	6.75"	3 1/2"	10
DEB-250-SC	3.24"	1.50"	6.75"	3 1/2"	10

Air Testable

MODEL	DIM. "A"	DIM. "B"	DIM. "C"	MTG HOLE SIZE	MTG STUDS
DEB-150-DA	1.75"	1.50"	6.75"	3 1/2"	8
DEB-150-SCA	2.00"	1.50"	6.75"	3 1/2"	8
DEB-175-DA	2.00"	1.50"	6.75"	3 1/2"	8
DEB-175-SCA	2.40"	1.50"	6.75"	3 1/2"	8
DEB-200-DA	2.50"	1.50"	8.00"	5 1/2"	10
DEB-252-DA	3.00"	1.50"	8.00"	5 1/2"	10
DEB-250-SCA	3.24"	1.50"	8.00"	5 1/2"	10



Flexible Double Entry Boots

The APT Flexible Double Entry Boot allows two pipes or conduits to go through a single sump entry boot opening. The APT boot comes in two different styles, the Flexible Double Boot for non-ducted applications and the Ducted Double Boot when using APT DCT-400 corrugated piping. Double entry boots accommodate ¾" and 1" pipe sizes or a combination of the two.



Design Highlights & Advantages

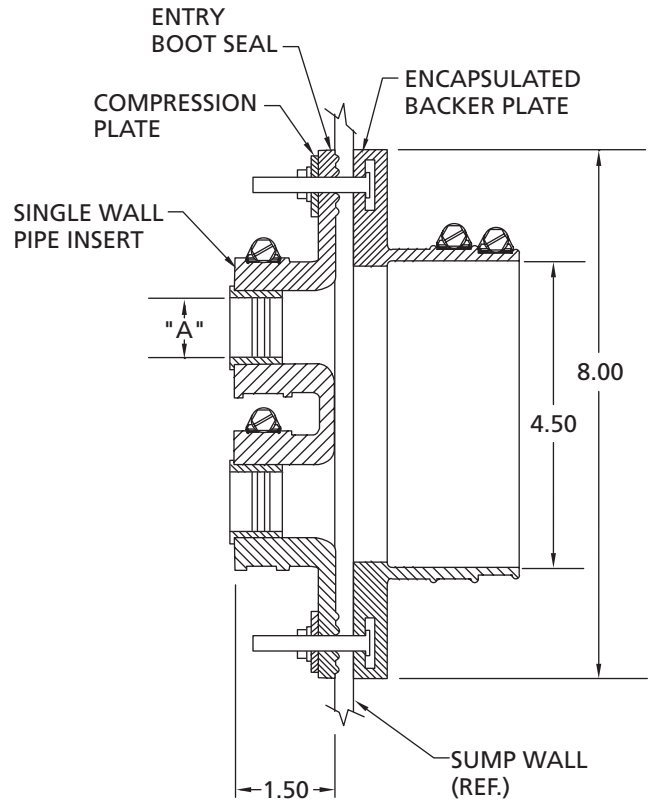
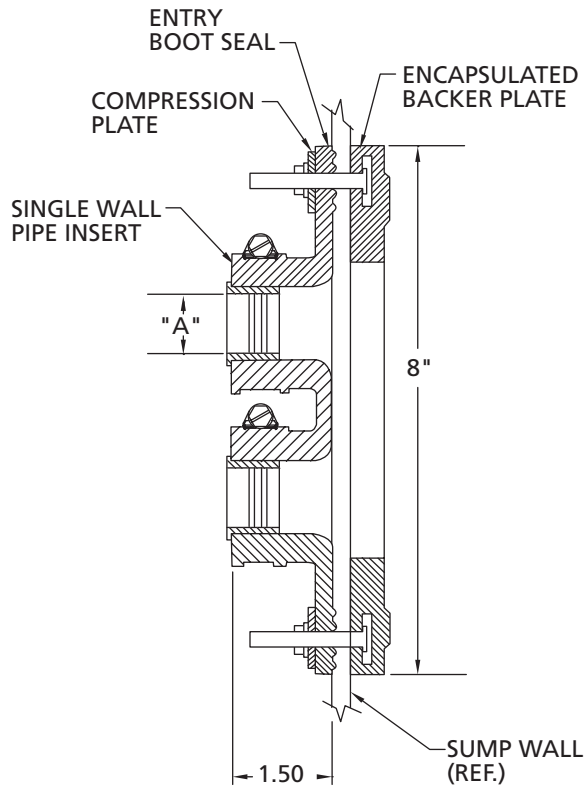
- Designed to be used with APT product piping, the entry boots are also ideal for use with rigid piping and electrical conduits.
- Flexible Double Entry Boots are ideal for generator, fuel oil return and feed line applications.
- Boot can be serviced from inside the sump so there is no need to break concrete.
- Made from oil and gasoline resistant nitrile rubber.
- Allows two pipes to go through one boot for easier installation.
- Combination of two different pipe diameters through one boot can be easily converted by simply removing the insert in the pipe opening.

MODEL	DESCRIPTION (FLEXIBLE)
FDB-075-D	Flexible Double Boot for ¾" conduit
FDB-075-SC	Flexible Double Boot for P-075-SC
FDB-100-D	Flexible Double Boot for XP-100-D or 1" conduit
FDB-100-SC	Flexible Double Boot for XP-100-SC
MODEL	DESCRIPTION (DUCTED)
DDB-075-D	Ducted Double Boot for ¾" conduit
DDB-075-SC	Ducted Double Boot for P-075-SC
DDB-100-D	Ducted Double Boot for XP-100-D or 1" conduit
DDB-100-SC	Ducted Double Boot for XP-100-SC





Flexible Double Entry Boots



Flexible Double Entry Boots

MODEL	DIM. "A"	MTG HOLE SIZE	MTG STUDS
FDB-075-D	1.05"	5.50"	10
FDB-075-SC	1.32"	5.50"	10
FDB-100-D	1.32"	5.50"	10
FDB-100-SC	1.70"	5.50"	10

Ducted Double Entry Boots

MODEL	DIM. "A"	MTG HOLE SIZE	MTG STUDS
DDB-075-D	1.05"	5.50"	10
DDB-075-SC	1.32"	5.50"	10
DDB-100-D	1.32"	5.50"	10
DDB-100-SC	1.70"	5.50"	10



Flexible Bulkhead Boots

APT bulkhead boots boast an enlarged gasket area to seal against the sump wall, and incorporate the proven advantages of APT standard flexible entry boot seal. The bulkhead boot requires only a single hole to be drilled for installation, reducing labor time and cost. APT offers a complete line of sizes for 1/2" through 2 1/2" single and secondary contained pipe. The 1 1/2" thru 2 1/2" sizes are also available in a ducted boot version to accommodate the use of APT DCT-400 corrugated ducting for easy retractability.



Design Highlights & Advantages

- Designed to be used with APT's product piping, the bulkhead boots are also ideal for use with rigid piping and electrical conduits.
- Flexible bulkhead boots available in sizes from 1/2" through 2 1/2". Ducted bulkhead boots available in sizes from 1 1/2" through 2 1/2".
- Boot size designations correspond directly to the pipe size being used.
- Any boot for a single wall pipe can be converted to a boot for a double wall pipe by simply removing the insert in the pipe opening.
- Bulkhead boots can be serviced from inside the sump eliminating the need for sump excavation.
- Made from oil and gasoline resistant nitrile rubber.

MODEL	DESCRIPTION (FLEXIBLE)
FBB-050-D	Flexible Bulkhead Boot for 1/2" electrical conduit
FBB-050-SC	Flexible Bulkhead Boot for 3/4" electrical conduit
FBB-075-D	Flexible Bulkhead Boot for P-075-D, 3/4" and 1" electrical conduit
FBB-075-SC	Flexible Bulkhead Boot for P-075-SC and 1" electrical conduit
FBB-100-D	Flexible Bulkhead Boot for XP-100-D
FBB-100-SC	Flexible Bulkhead Boot for XP-100-SC
FBB-150-D	Flexible Bulkhead Boot for XP-150-D
FBB-150-SC	Flexible Bulkhead Boot for XP-150-SC
FBB-175-D	Flexible Bulkhead Boot for XP-175-D
FBB-175-SC	Flexible Bulkhead Boot for XP-175-SC and 2" Fiberglass
FBB-200-D	Flexible Bulkhead Boot for XP-200-D
FBB-200-SC	Flexible Bulkhead Boot for XP-200-SC
FBB-250-SC	Flexible Bulkhead Boot for P-250-SC

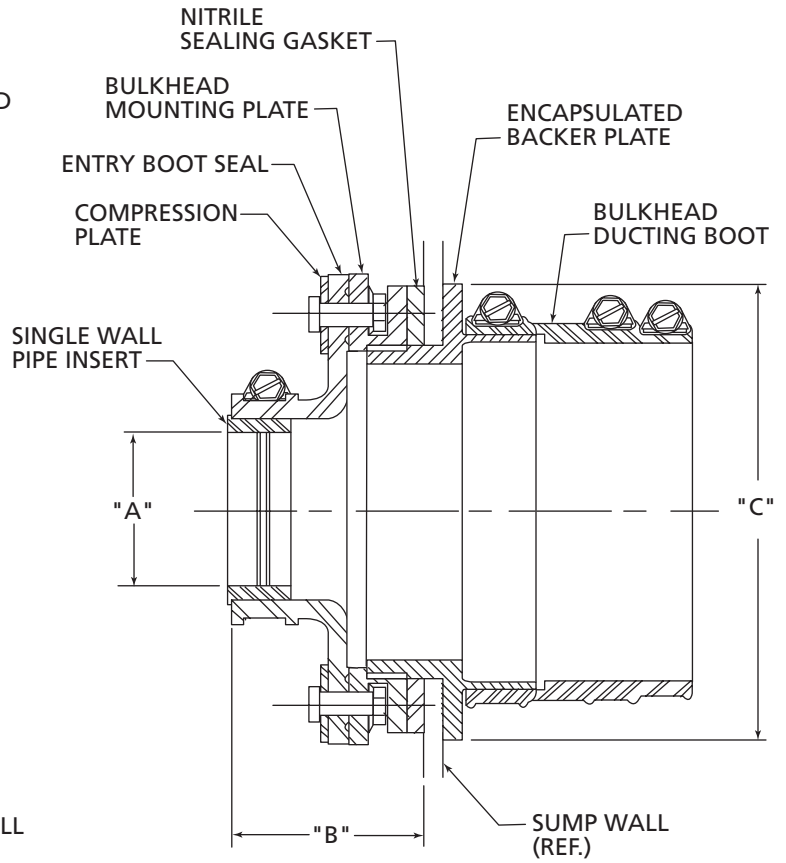
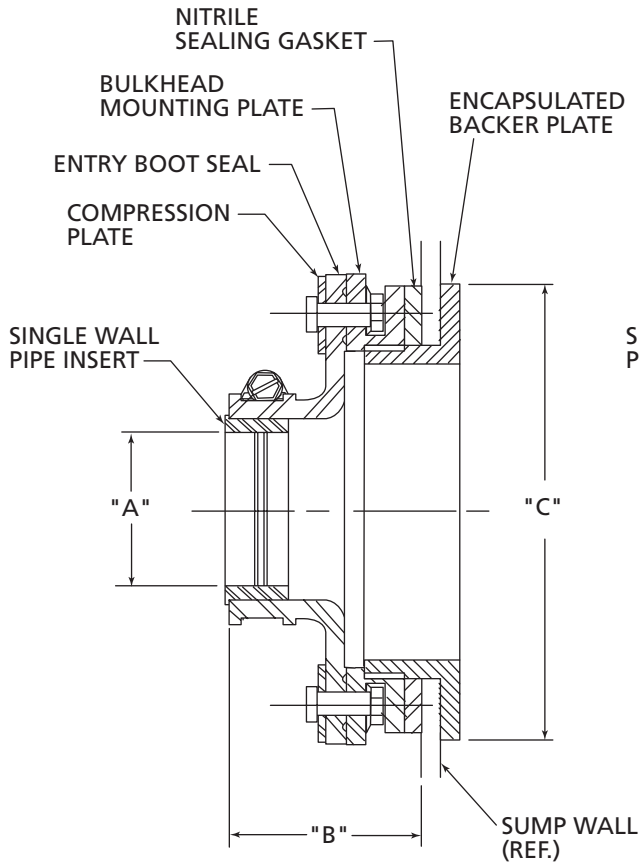
MODEL	DESCRIPTION (AIR TESTABLE)
DBB-150-DA	Ducted Bulkhead Boot for XP-150-SC
DBB-150-SCA	Ducted Bulkhead Boot for XP-150-SC
DBB-175-DA	Ducted Bulkhead Boot for XP-175-D
DBB-175-SCA	Ducted Bulkhead Boot for XP-175-SC

MODEL	DESCRIPTION (DUCTED)
DBB-150-D	Ducted Bulkhead Boot for XP-150-D
DBB-150-SC	Ducted Bulkhead Boot for XP-150-SC
DBB-175-D	Ducted Bulkhead Boot for XP-175-D
DBB-175-SC	Ducted Bulkhead Boot for XP-175-SC
DBB-200-D	Ducted Bulkhead Boot for XP-200-D
DBB-200-SC	Ducted Bulkhead Boot for XP-200-SC
DBB-250-SC	Ducted Bulkhead Boot for P-250-SC





Flexible Bulkhead Boots



Flexible Bulkhead Boots

MODEL	DIM. "A"	DIM. "B"	DIM. "C"	MTG HOLE SIZE
FBB-050-D	0.84"	2.50"	4.00"	2 3/8"
FBB-050-SC	1.05"	2.50"	4.00"	2 3/8"
FBB-075-D	1.05"	2.50"	4.00"	2 3/8"
FBB-075-SC	1.32"	2.50"	4.00"	2 3/8"
FBB-100-D	1.32"	2.50"	4.00"	2 3/8"
FBB-100-SC	1.70"	2.50"	4.00"	2 3/8"
FBB-150-D	1.75"	2.50"	6.00"	4 3/8"
FEB-150-SC	2.00"	2.50"	6.00"	4 3/8"
FBB-175-D	2.00"	2.50"	6.00"	4 3/8"
FBB-175-SC	2.40"	2.50"	6.00"	4 3/8"
FBB-200-D	2.50"	2.50"	6.00"	4 3/8"
FBB-200-SC	2.88"	2.50"	6.00"	4 3/8"
FBB-250-SC	3.24"	2.50"	6.00"	4 3/8"

Ducted Bulkhead Boots

MODEL	DIM. "A"	DIM. "B"	DIM. "C"	MTG HOLE SIZE
DBB-150-D	1.75"	2.50"	6.00"	4 3/8"
DBB-150-SC	2.00"	2.50"	6.00"	4 3/8"
DBB-175-D	2.00"	2.50"	6.00"	4 3/8"
DBB-175-SC	2.40"	2.50"	6.00"	4 3/8"
DBB-200-D	2.50"	2.50"	6.00"	4 3/8"
DBB-200-SC	2.88"	2.50"	6.00"	4 3/8"
DBB-250-SC	3.24"	2.50"	6.00"	4 3/8"

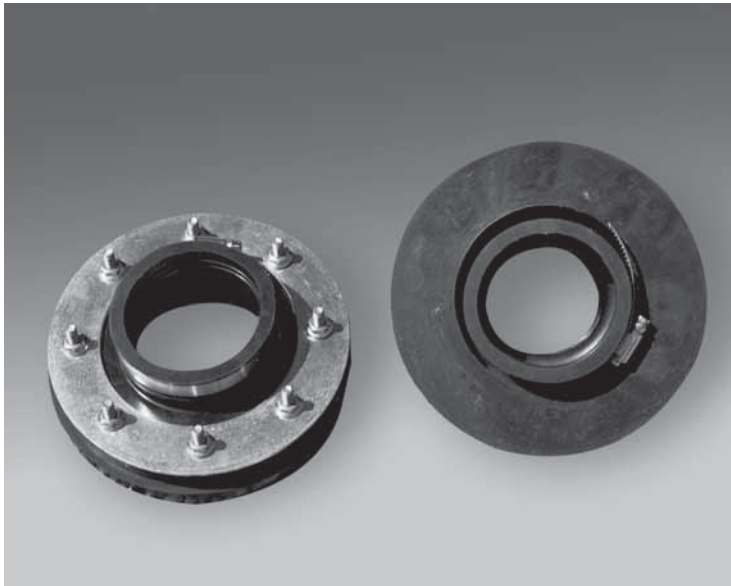
Air Testable

MODEL	DIM. "A"	DIM. "B"	DIM. "C"	MTG HOLE SIZE
DBB-150-DA	1.75"	2.50"	6.00"	4 3/8"
DBB-150-SCA	2.00"	2.50"	6.00"	4 3/8"
DBB-175-DA	2.00"	2.50"	6.00"	4 3/8"
DBB-175-SCA	2.40"	2.50"	6.00"	4 3/8"



MD Series Flexible Entry Boots

When using the APT Metallic Ducted (MD) series pipe, the use of the MD series flexible entry boot is required. These boots are similar in design to our standard flexible entry boots, except they include an additional seal that faces outward to secure the MD layer of the pipe to the sump wall, and terminate the single or secondary contained piping on the inside of the sump for a water/fuel tight seal.



Design Highlights & Advantages

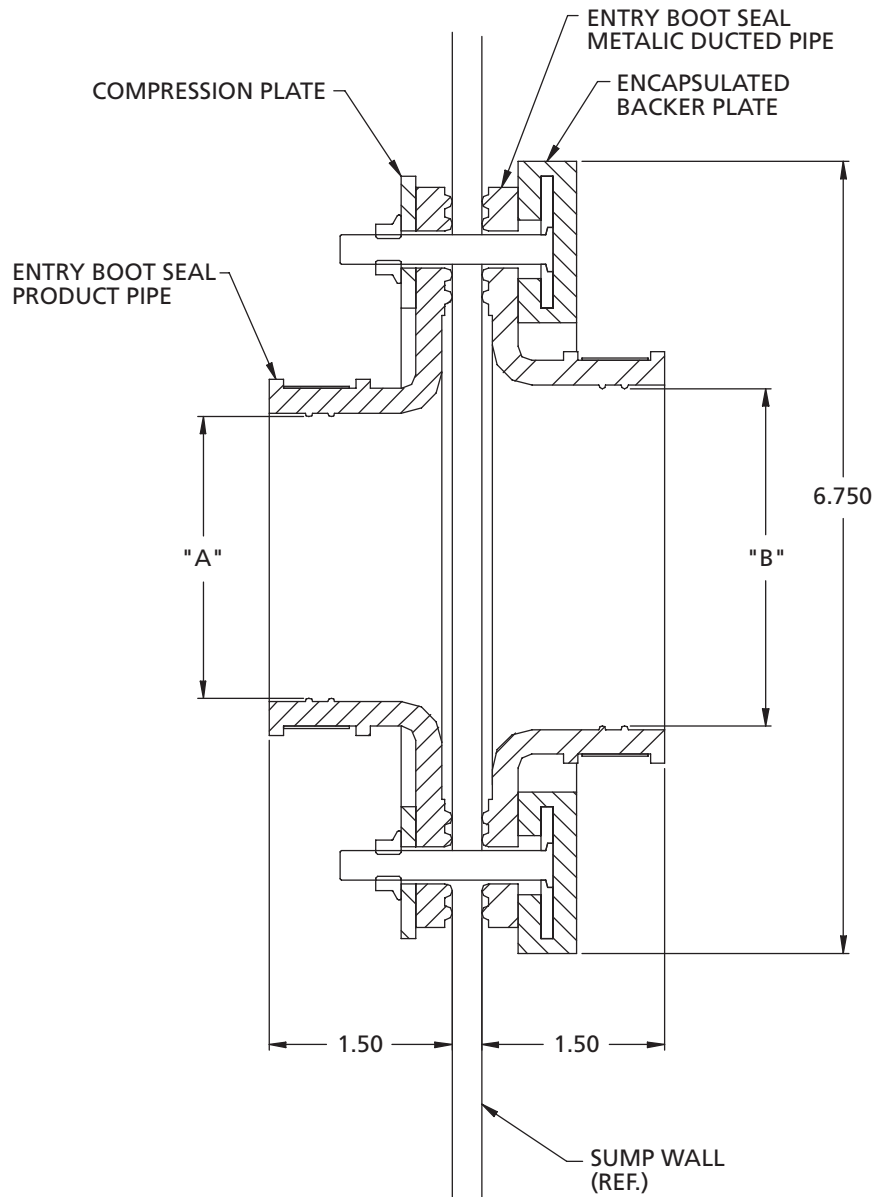
- Same proven design features of APT standard flexible entry boots.
- Inner seal provides water tight seal around the single or secondary contained product pipe.
- The outer seal secures the MD layer to the sump wall.
- Double seals offer additional security for the harsh conditions of marina and aboveground applications.
- Made from gas and oil resistant nitrile rubber.
- Will work on round sumps of 36" or larger diameter.

MODEL	DESCRIPTION
FEB-075-MDD	Flexible Entry Boot for P-075-MD
FEB-075-MD	Flexible Entry Boot for P-075-MD
FEB-100-MDD	Flexible Entry Boot for XP-100-MDD
FEB-100-MD	Flexible Entry Boot for XP-100-MD
FEB-150-MDD	Flexible Entry Boot for XP-150-MDD
FEB-150-MD	Flexible Entry Boot for XP-150-MD
FEB-175-MDD	Flexible Entry Boot for XP-175-MDD
FEB-175-MD	Flexible Entry Boot for XP-175-MD
FEB-200-MDD	Flexible Entry Boot for XP-200-MDD
FEB-200-MD	Flexible Entry Boot for XP-200-MD





MD Series Flexible Entry Boots

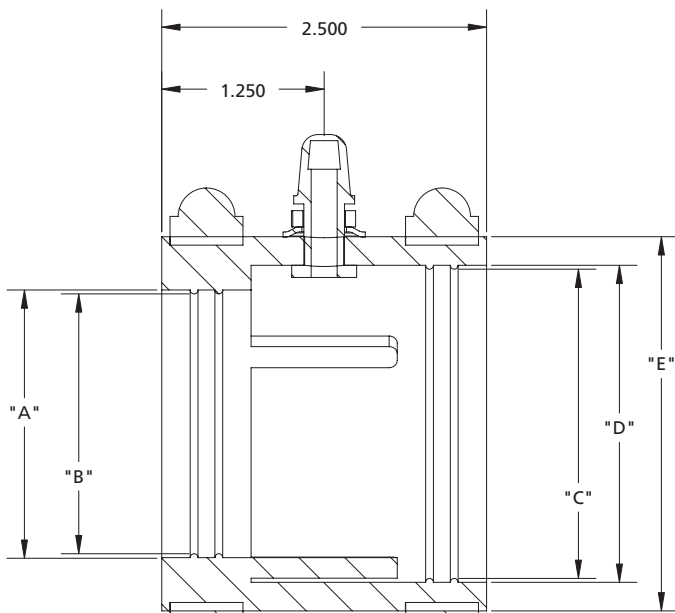


MODEL	DESCRIPTION	DIM. "A"	DIM. "B"	HOLE SIZE	MTG STUDS
FEB-075-MDD	Flexible Entry Boot for 3/4" single wall pipe and MD pipe	1.05"	1.70"	2"	4
FEB-075-MD	Flexible Entry Boot for 3/4" secondary contained pipe and MD pipe	1.32"	2.00"	3 1/2"	8
FEB-100-MDD	Flexible Entry Boot for 1" single wall pipe and MD pipe	1.32"	2.00"	3 1/2"	8
FEB-100-MD	Flexible Entry Boot for 1" secondary contained pipe and MD pipe	1.70"	2.40"	3 1/2"	8
FEB-150-MDD	Flexible Entry Boot for 1 1/2" single wall pipe and MD pipe	1.75"	2.40"	3 1/2"	8
FEB-150-MD	Flexible Entry Boot for 1 1/2" secondary contained pipe and MD pipe	2.00"	2.88"	3 1/2"	8
FEB-175-MDD	Flexible Entry Boot for 1 3/4" single wall pipe and MD pipe	2.00"	2.88"	3 1/2"	8
FEB-175-MD	Flexible Entry Boot for 1 3/4" secondary contained pipe and MD pipe	2.40"	2.88"	3 1/2"	8
FEB-200-MDD	Flexible Entry Boot for 2" single wall pipe and MD pipe	2.50"	3.50"	3 1/2"	8
FEB-200-MD	Flexible Entry Boot for 2" secondary contained pipe and MD pipe	2.88"	3.50"	3 1/2"	8



Clamshell Secondary Test Boots

APT secondary test boots are designed for testing the integrity of secondarily-contained flexible piping when using APT clamshell fittings. Each boot has an air chuck for applying air pressure to the secondary containment jacket. Placing a boot on each end of the secondary containment jacket forms an airtight chamber for testing. After the testing is completed, slide the boots back on the pipe to open the secondary system. The boots remain available for periodic testing as required by local regulations.



Design Highlights & Advantages

- Secondary test boots slip over the end of the pipe prior to installation of end fittings.
- Boots are manufactured using fuel-resistant nitrile rubber and employ brass air chucks and stainless steel clamps for maximum corrosion resistance.
- Boots are easily clamped down with a screwdriver or 5/16" nut driver, forming an airtight chamber between the primary pipe and the secondary jacket.
- The secondary chamber is pressurized to 5-8 psi through air chuck to test system integrity.
- After pressure testing, the boots remain on the pipe for future use but are pulled back to permit back-flow of fuel leaks to the tank sump.

MODEL	DESCRIPTION
STB-075	Secondary Test Boot for P-075-SC Pipe
STB-100	Secondary Test Boot for XP-100-SC Pipe
STB-150	Secondary Test Boot for XP-150-SC Pipe
STB-175	Secondary Test Boot for XP-175-SC Pipe
STB-200	Secondary Test Boot for XP-200-SC Pipe
STB-250	Secondary Test Boot for P-250-SC Pipe

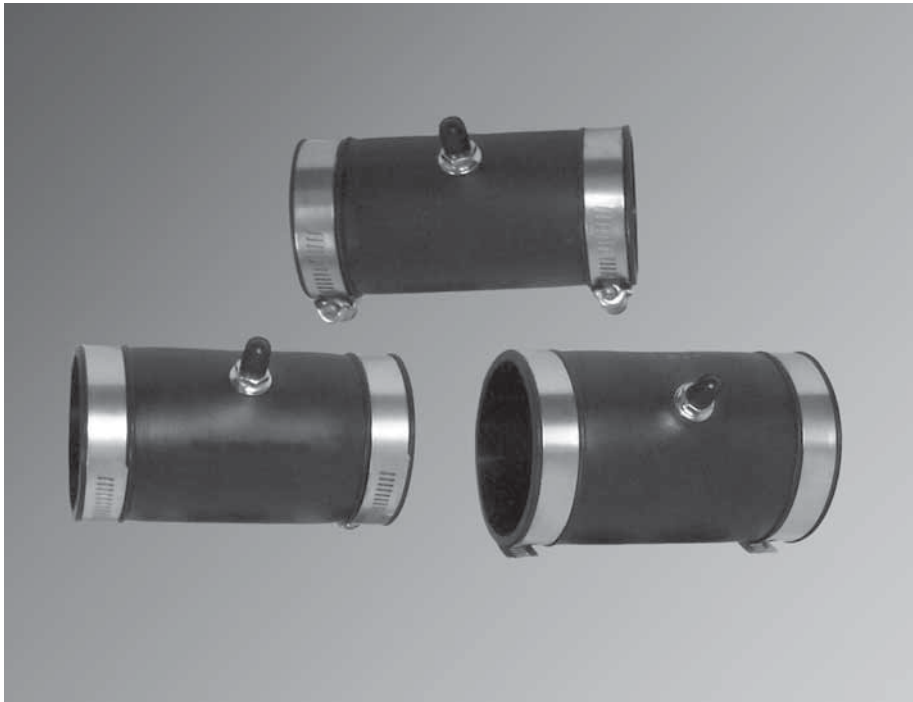
MODEL	DIA. "A"	DIA. "B"	DIA. "C"	DIA. "D"	DIA. "E"
STB-075	1.10"	1.05"	1.32"	1.38"	1.82"
STB-100	1.38"	1.32"	1.70"	1.76"	2.20"
STB-150	1.81"	1.75"	2.00"	2.06"	2.50"
STB-175	2.06"	2.00"	2.38"	2.44"	2.88"
STB-200	2.56"	2.50"	2.88"	2.94"	3.38"
STB-250	3.00"	2.94"	3.18"	3.24"	3.68"





Swage Secondary Air Test Boot

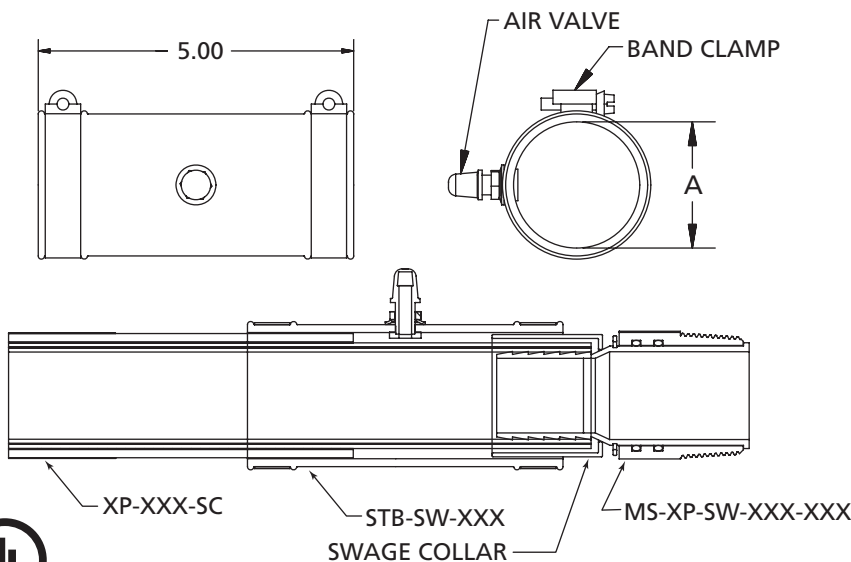
APT secondary test boots are designed for testing the integrity of SC flexible piping when using the APT swage fitting. Each boot has an air chuck for applying air pressure to the SC jacket to form an air-tight chamber for testing purposes. After testing is completed, slide boots back on the pipe system. The boots remain available for periodic testing as required by local regulations.



Design Highlights & Advantages

- Secondary test boots slip over the swage fitting after penetrating through the flexible entry boot.
- Boots are manufactured using fuel-resistant nitrile rubber and employ brass air chucks and stainless steel clamps for maximum corrosion resistance.
- Boots are easily clamped down over the collar and secondary with a screwdriver or 5/16" nut driver, forming an airtight chamber between the primary pipe and the secondary jacket.
- The secondary chamber is pressurized to 5-8 psi through air chuck to test system integrity.
- After pressure testing, the boots remain on the pipe for future use but are pulled back to permit back-flow of fuel leaks to the tank sump.

MODEL	DESCRIPTION
STB-SW-150	Secondary Test Boot for Swage XP-150 Piping
STB-SW-175	Secondary Test Boot for Swage XP-175 Piping
STB-SW-200	Secondary Test Boot for Swage XP-200 Piping



MODEL	DIM. "A"
STB-SW-150	2.12"
STB-SW-175	2.50"
STB-SW-200	2.88"





APT Rigid Pipe-Boot Reference Chart

THIN WALL ELECTRICAL CONDUIT		APT ENTRY BOOTS
.500"		FEB-050-D
.750"		FEB-050-SC
1.000"		FEB-075-SC

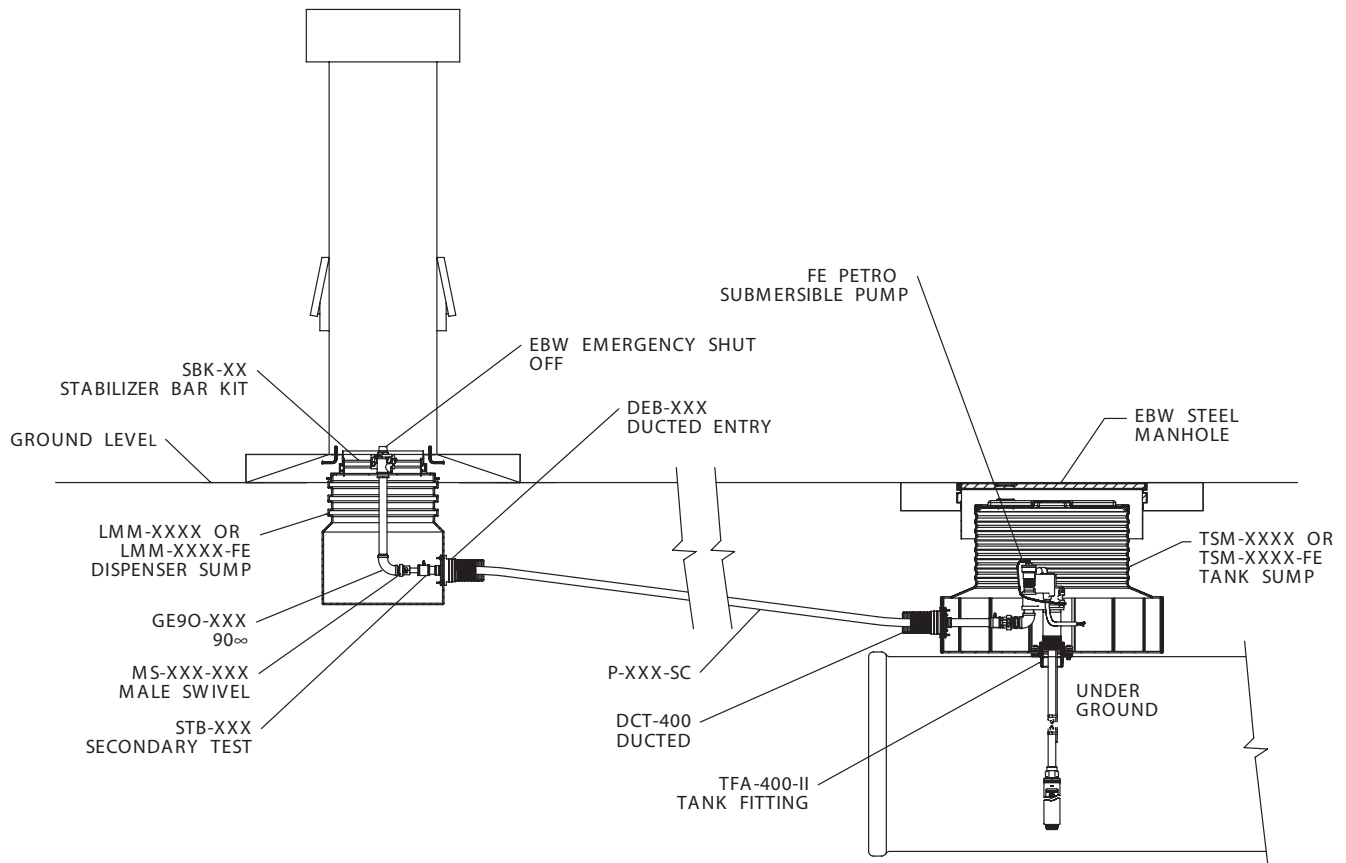
GALVANIZED ELECTRICAL CONDUIT		APT ENTRY BOOTS
.500"		FEB-050-D
.750"		FEB-050-SC
1.000"		FEB-075-SC

GALVANIZED PIPE		APT ENTRY BOOTS
1.500"		FEB-150-SC
2.000"		FEB-175-SC

FIBERGLASS PIPING (SINGLE WALL)		APT ENTRY BOOTS
2.000"		FEB-175-SC
3.000"	3.50" O.D.	FEB-300-R
4.000"		FEB-400-R

SCHEDULE 40/80 PIPE SAME O.D.		APT ENTRY BOOTS
.500"		FEB-050-D
.750"		FEB-050-SC
1.000"		FEB-075-SC
1.250"	1.32" O.D.	FEB-100-SC
1.500"	1.70" O.D.	FEB-150-SC
2.000"		FEB-175-SC
2.500"		FEB-200-SC
3.000"		FEB-300-R
4.000"		FEB-400-R

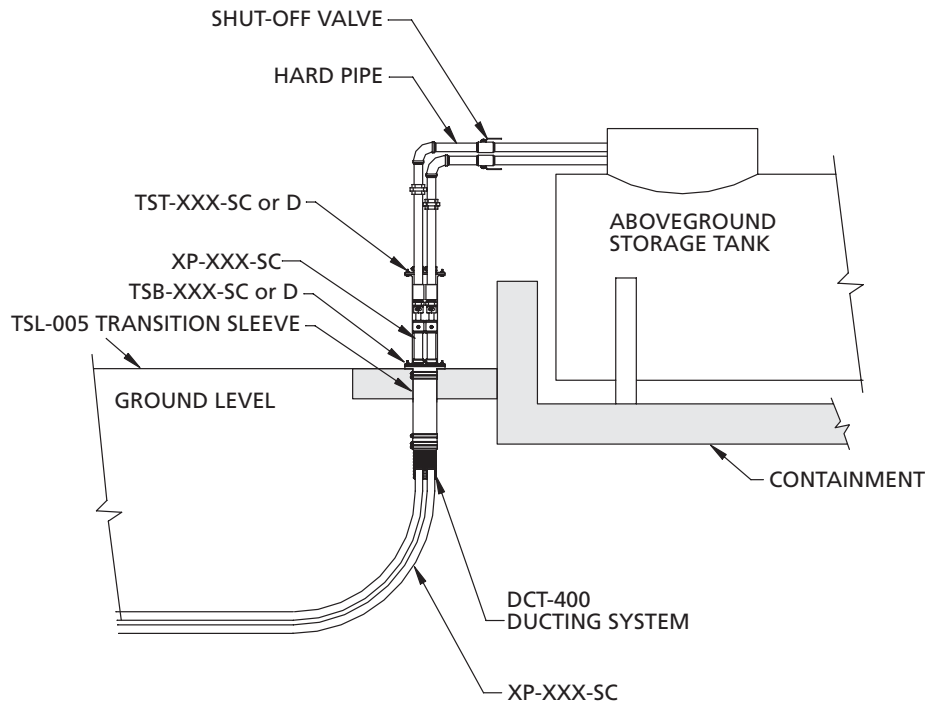
Below Grade Typical Application Drawing





Grade Level Transition Sleeve™

The Transition Sleeve is the practical, environmentally sound solution for above/below ground supply of generator or boiler applications from remote storage tanks. Steel piping enters the sleeve through APT special flexible Dual Entry Boots. It is an economical alternative that allows a straight forward installation with no special tools.



Design Highlights & Advantages

- Transition sleeve provides the transition for above and below ground level.
- Transition sleeve provides the transition of APT pipe to steel pipe.
- May be additionally used for through-wall installation, above or below ground.
- Low cost alternative to the AST-2922 Transition Sump.
- Designed to utilize APT's Dual Entry and ducted boots.
- Split design allows aboveground spill or leak containment. Ready access for maintenance or replacement of joint hardware and pipe.
- The Transition Sleeve can accommodate both ¾" and 1" or combination of both in one run for fill/feed generator applications.



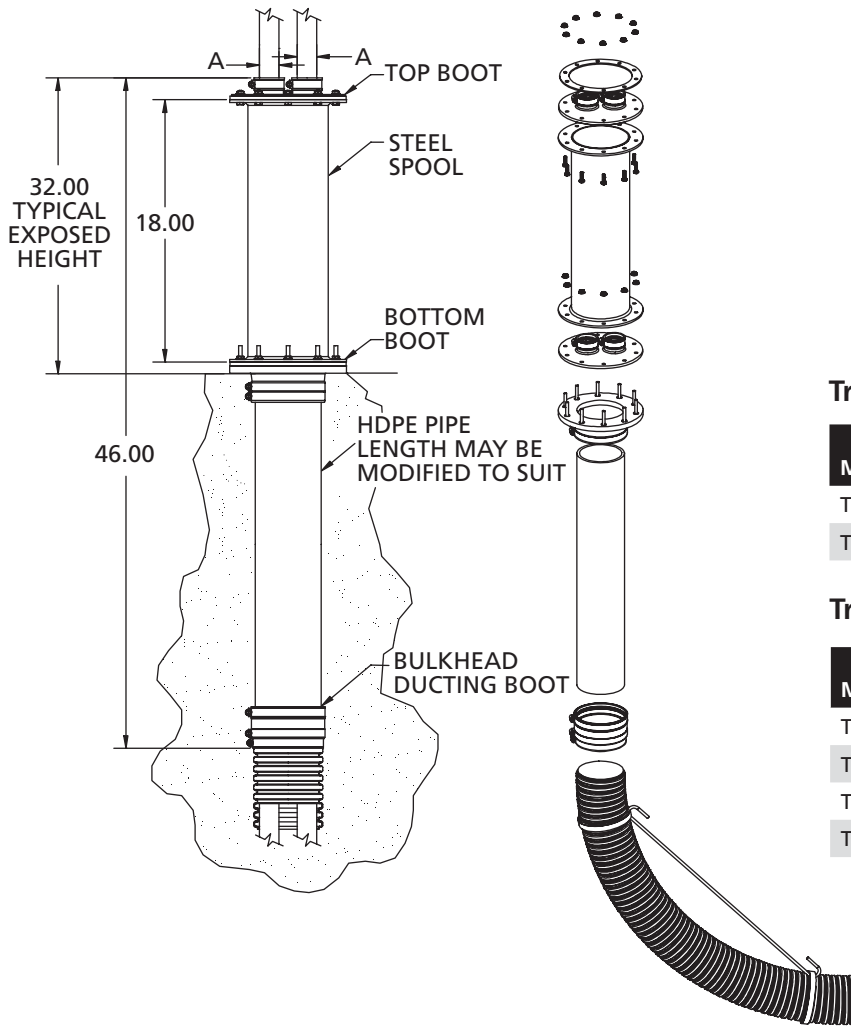
MODEL	DESCRIPTION
TSL-005	Transition Sleeve (Top and Bottom Boot Assembly REQUIRED, sold separately)

MODEL	DESCRIPTION (TOP BOOT ASSEMBLY)
TST-075-D	Transition Sleeve Top Flexible Entry Boot, ¾" steel pipe
TST-100-D	Transition Sleeve Top Flexible Entry Boot steel pipe

MODEL	DESCRIPTION (BOTTOM BOOT ASSEMBLY)
TSB-075-D	Transition Sleeve Bottom Flexible Entry Boot for P-075-D
TSB-075-SC	Transition Sleeve Bottom Flexible Entry Boot for P-075-SC
TSB-100-D	Transition Sleeve Bottom Flexible Entry Boot for XP-100-D or 1" conduit
TSB-100-SC	Transition Sleeve Bottom Flexible Entry Boot for XP-100-SC



Grade Level Transition Sleeve™



Transition Sleeve Assembly

TSL-005 includes:

- Transition Sleeve Spool 5" I.D.
- HDPE Pipe 18" Length 4" I.D.
- Bulkhead Ducting Boot
- Hose Clamps
- Blue Corrugated Ducting 48" Length
- ¼" Formed Steel Rod
- Installation Instructions

Transition Sleeve Top Boot Assembly

MODEL	DIM. "A"	MOUNTING HOLE SIZE	MTG. STUDS
TST-075-D	1.05" or 1.32"	5.50"	10
TST-100-D	1.32" or 1.70"	5.50"	10

Transition Sleeve Bottom Boot Assembly

MODEL	DIM. "A"	MOUNTING HOLE SIZE	MTG. STUDS
TSB-075-D	1.05"	5.50"	10
TSB-075-SC	1.32"	5.50"	10
TSB-100-D	1.32" or 1.70"	5.50"	10
TSB-100-SC	1.70"	5.50"	10

NOTE: The transition sleeve along with the top and bottom entry boot should be ordered separately.

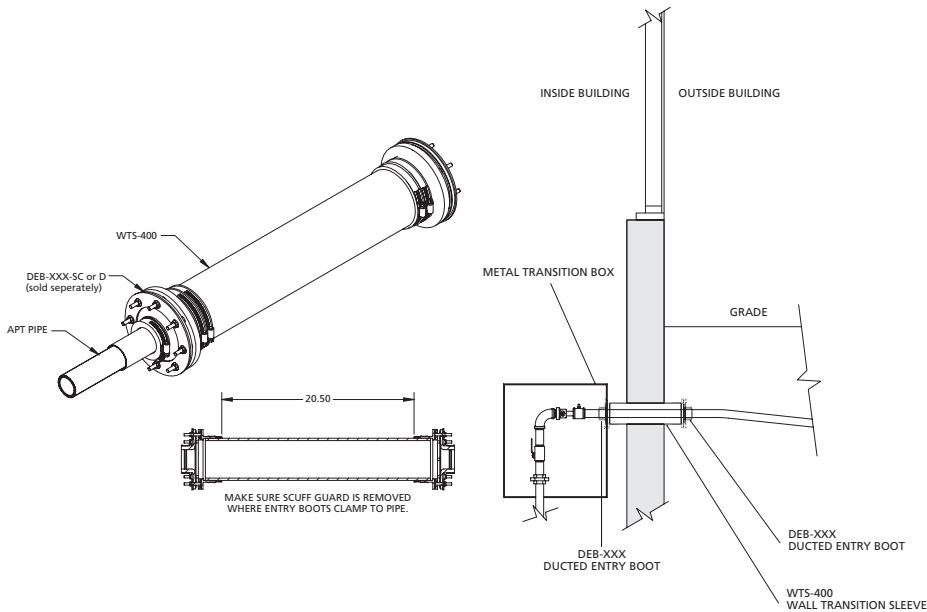


Below Grade Wall Transition Sleeve

The Wall Transition Sleeve is a practical, environmentally sound solution for below ground generator or boiler applications that pass through the wall of buildings or concrete structures. Piping enters the sleeve through APT's special flexible Entry Boots. The wall transition sleeve is an economical alternative that allows a straightforward installation with no tools.

Design Highlights & Advantages

- Transition sleeve used for through-wall installation ground.
- Low cost alternative.
- Designed to utilize APT's ducted entry and single entry flexible boots.
- The Transition Sleeve can accommodate both ¾" and 1" or combination of both in one run for fill/feed generator applications.
- 1 ½" thru 2".



MODEL	DESCRIPTION
WTS-400	Wall Transition Sleeve, (Ducted Entry Boot REQUIRED, sold separately)



Below Grade Transition Tank Sumps

APT TS-2430, TS-3630 and TS-4230 tank sumps are ideally suited for low cost retrofits and shallow burial applications. The TS-2430 is ideal for line branching points and for containing piping splices. The 36" or 42" bases provide ample space for submersibles and fittings. The bolt on gasket-lid combination fits economically under a 30" manhole.



Design Highlights & Advantages

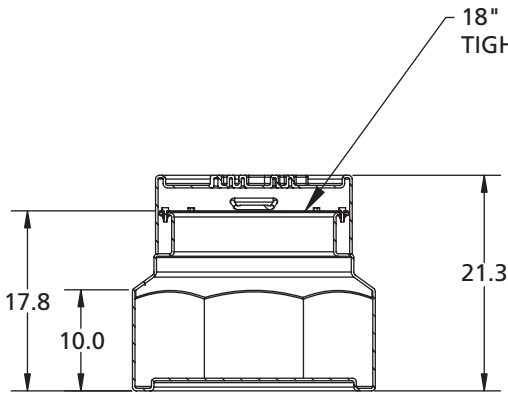
- TS-2430 utilize an 18" bolt down water-tight lid.
- TS-3630 and TS-4230 utilize a 23.5" bolt down water-tight lid.
- High density polyethylene construction is durable and chemical resistant.
- All TS-Series sumps allow fittings to be installed with ease, while tapered design allows for installation under an economical 30" manhole.
- Bolt down cover can be easily removed for routine inspections.
- One piece design enhances water resistance.

MODEL	DESCRIPTION
TS-2430	Transition Sump, Shallow Burial, 24" base, fits under a 30" Manhole
TS-3630	Tank Sump, Shallow Burial, 36" base, fits under a 30" Manhole
TS-4230	Tank Sump, Medium Burial, 42" base, fits under a 30" Manhole
TS-Kit	TS-3630/4230 Retro-Fit Kit — replacement lid assembly for screw-on polyethylene lids
999-855-55	Replacement Gasket

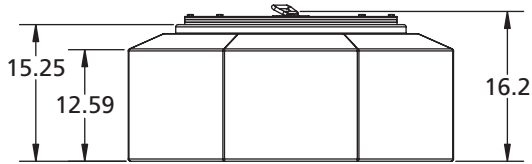
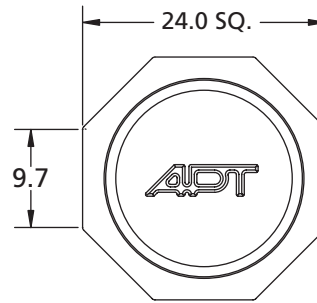




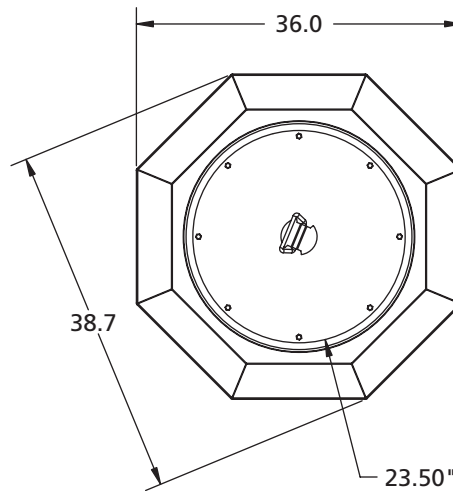
Below Grade Transition Tank Sumps



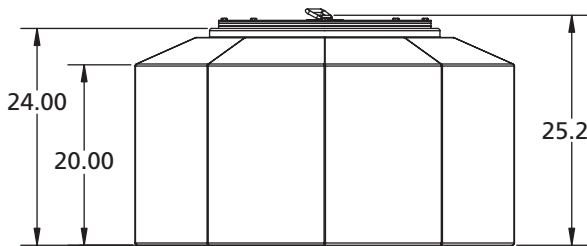
TS-2430



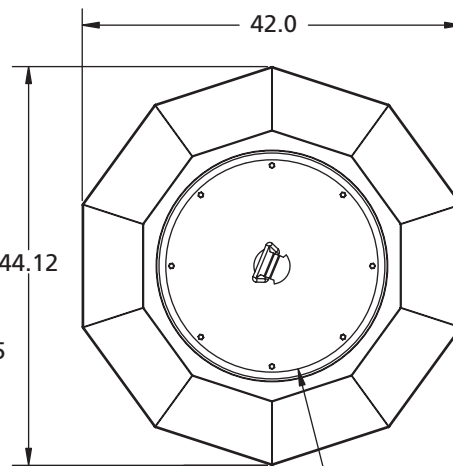
TS-3630



23.50" BOLT DOWN RAIN TIGHT ACCESS COVER



TS-4230

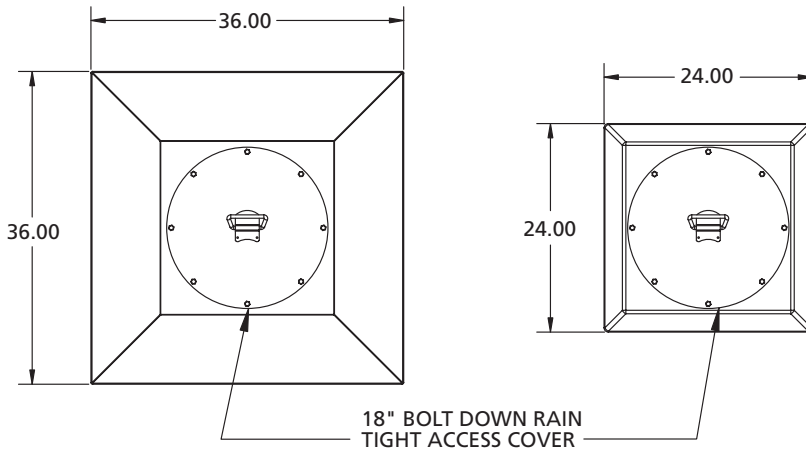


23.50" BOLT DOWN RAIN TIGHT ACCESS COVER



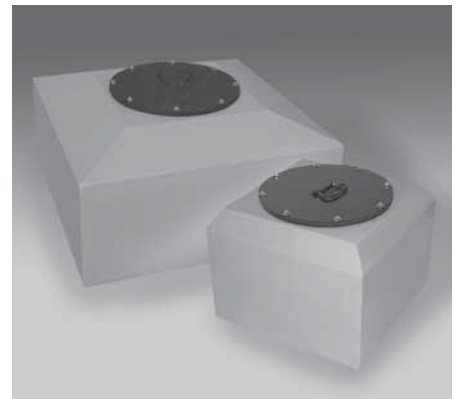
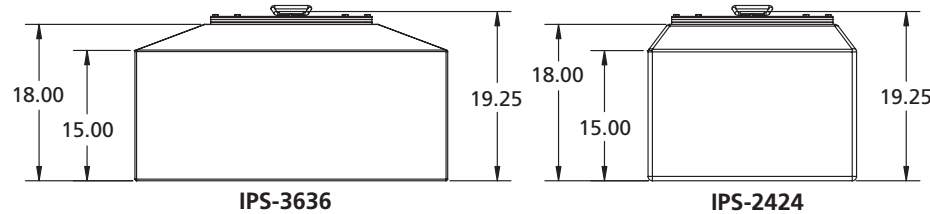
Below Grade Intermediate Piping Sumps

APT intermediate piping sumps are a multifunctional component in the underground flexible piping system. The IPS-2424 and IPS-3636 can be used as a containment sump for fittings when utilizing a tee between dispenser islands, for contained piping splices, or for line branching points. These sumps are ideal for a low point sensor chamber between USTs and dispenser islands where required.



Design Highlights & Advantages

- 18" bolt down water-tight lid.
- Design is engineered to be multifunctional.
- Sumps are constructed from high density polyethylene, making them durable and chemical resistant.
- Two sizes available, 24" x 24" square and 36" x 36" square.
- Tapered top allows both intermediate piping sumps to fit securely under a 24" manhole.
- One piece design ensures environmental security and water resistance.
- The IPS-2424 and IPS-3636 are UL and ULC listed.



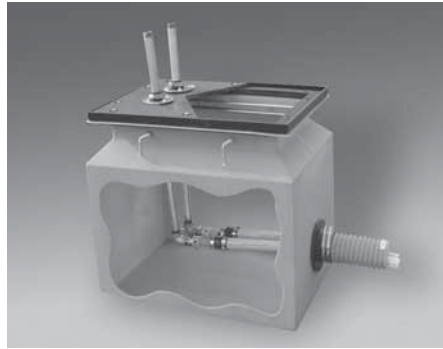
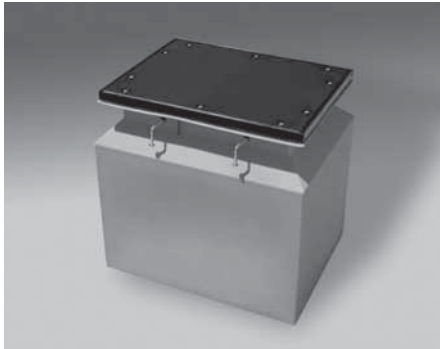
MODEL	DESCRIPTION
IPS-2424	Intermediate Piping Sump, 24" x 24" fits under a 24" Manhole
IPS-3636	Intermediate Piping Sump, 36" x 36" fits under a 24" Manhole
999-855-54	Replacement Gasket





Grade Level Transition Sump

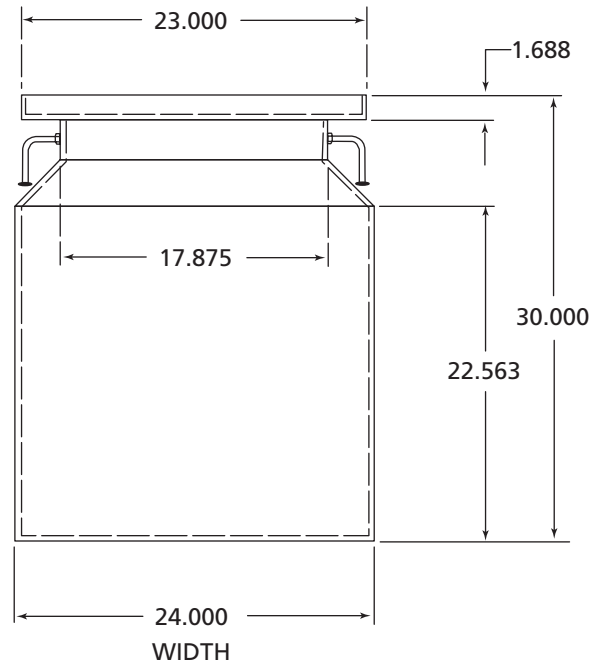
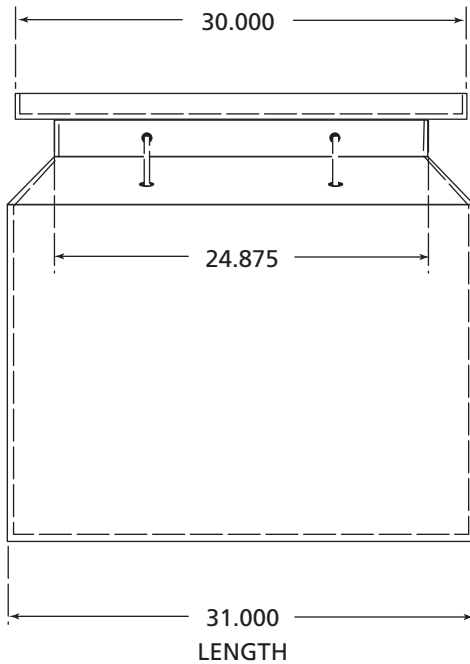
The AST above/below ground transition sump is the practical, environmentally sound solution for remote dispensing from above ground storage tanks. Steel and flexible piping enters the sump through APT's flexible entry boot. Inside the sump, the steel piping easily connects to flexible piping for a fuel tight, continuous run to dispensers or an intermediate sump.



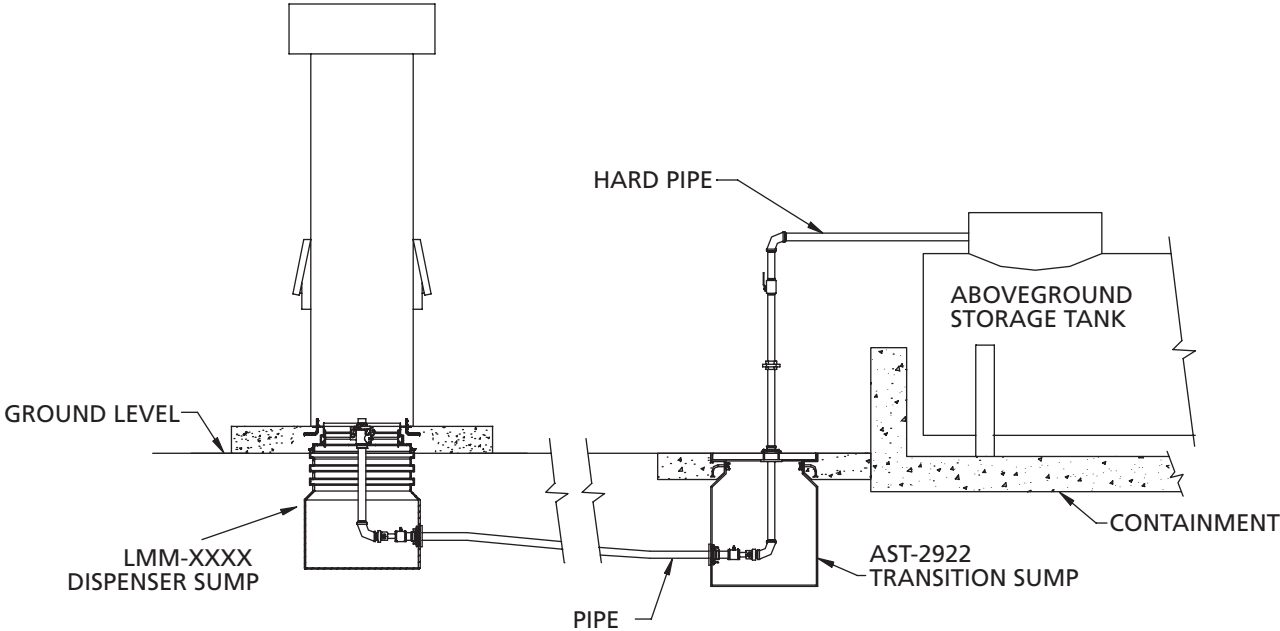
Design Highlights & Advantages

- Transition sumps help meet environmental regulations by isolating metal piping from the soil.
- Transition sumps can be installed either inside or outside containment dikes.
- 30" burial depth allows the transition sump to be used as the system low point for leak detection.
- Load rated composite cover.
- Flexible entry boot provides a fuel tight and watertight seal around the metal piping and flexible piping as it enters the sump lid and sidewall.
- H-20 load rating. Pipe entries installed in lids will negate the load rating.

MODEL	DESCRIPTION
AST-2922	Aboveground storage tank transition sump
999-855-53	Replacement Gasket
252-029-22	Replacement AST-2922 lid (grey)
IP-400-B	Inspection Replacement Port-FEB style with replacement well cap



Above Grade Typical Application Drawing

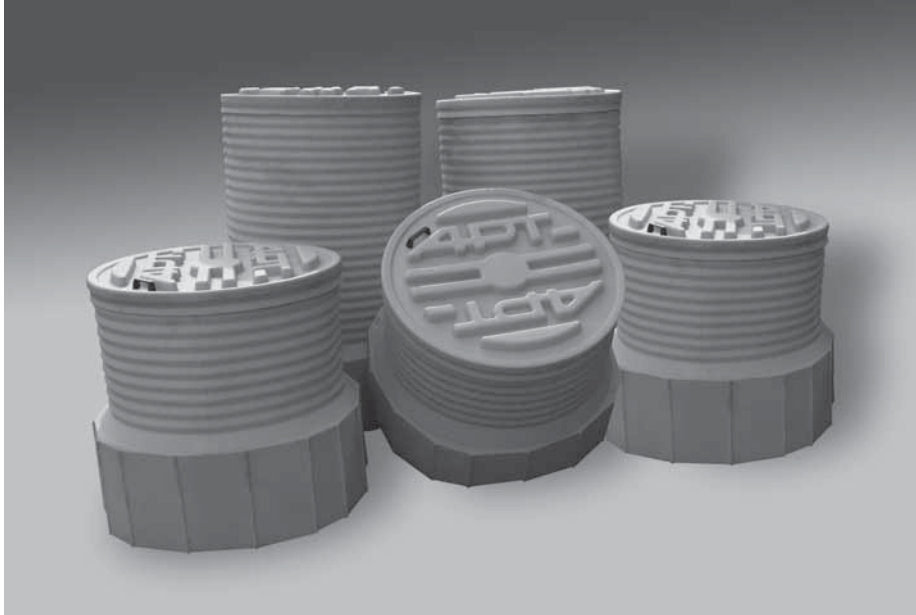




4542 Series One-Piece Tank Sump

The 4542 series one-piece tank sump is made of high-density polyethylene with a factory installed gasketed snap-on lid. The sixteen side panels allow for pipe entry from virtually any direction.

The 4542 series tank sump is available in three burial depths. Each is offered an optional inspection port (IP) for easy viewing of the interior of the sump without removal of the lid.



Design Highlights & Advantages

- Economically priced one-piece design.
- Ribbed riser allow for simple 3" height adjustments using standard tools.
- Available in deep, medium and shallow burial depth models.
- Utilizes a unique gasketed, snap-on lid design.
- Sized to fit under a standard 42" manhole.
- Central location for an optional inspection port.
- Lid designed with a large-grip handle and sump lid puller for easy removal of the snap-on lid.

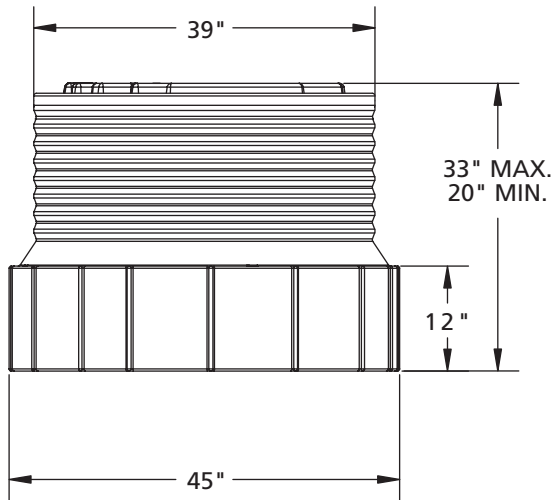
MODEL	DESCRIPTION
TSD-4542	Tank Sump, Deep Burial, 45" Base, fits 42" Manhole
TSD-4542-IP	TSD-4542 Sump with Inspection Port factory installed
TSM-4542	Tank Sump, Medium Burial, 45" Base, fits 42" Manhole
TSM-4542-IP	TSM-4542 Sump with Inspection Port factory installed
TSS-4542	Tank Sump, Shallow Burial, 45" Base, fits 42" Manhole
TSS-4542-IP	TSS-4542 Sump with Inspection Port factory installed
260-042-01	TSM-4542 Sump Lid Replacement
MA-22	Manway Adaptor, 22"
MA-24	Manway Adaptor, 24"
IP-400	Inspection port
IP-400-B	Inspection port - FEP style with well cap



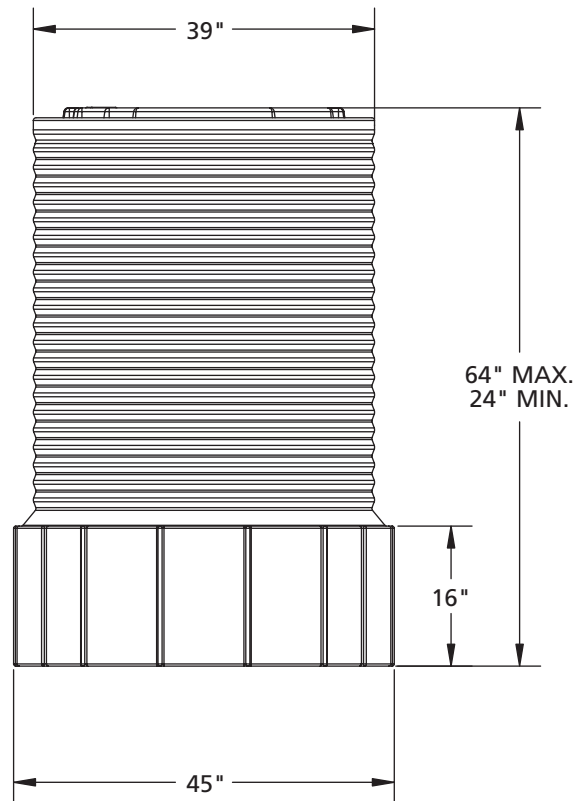


4542 Series One-Piece Tank Sump

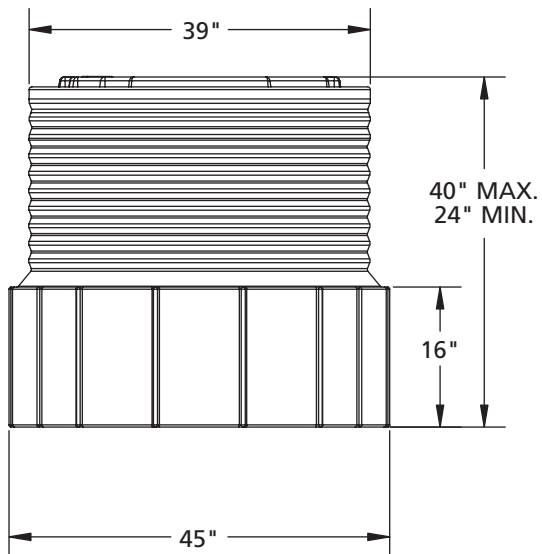
TSS-4542 TANK SUMP
SHALLOW BURIAL



TSD-4542 TANK SUMP
DEEP BURIAL



TSM-4542 TANK SUMP
MEDIUM BURIAL

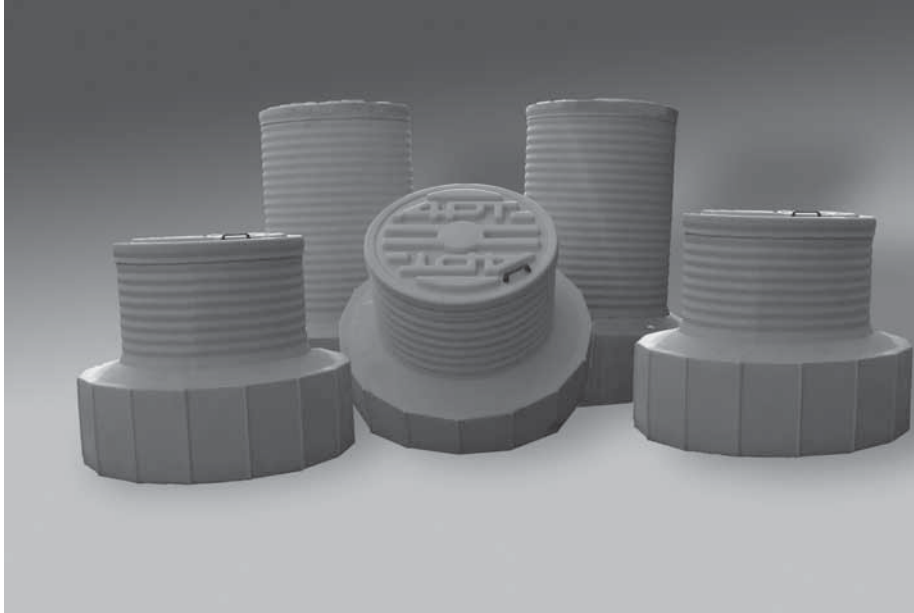




4736 Series One-Piece Tank Sump

The 4736 series one-piece tank sump is made of high-density polyethylene with a factory installed gasketed snap-on lid. The sixteen side panels allow for pipe entry from virtually any direction.

The 4736 series tank sump is available in three burial depths. Each is offered an optional inspection port (IP) for easy viewing of the interior of the sump without removal of the lid.



Design Highlights & Advantages

- Economically priced one-piece design.
- Ribbed riser allow for simple 3" height adjustments using standard tools.
- Available in deep, medium and shallow burial depth models.
- Utilizes a unique gasketed, snap-on lid design.
- Sized to fit under a standard 36" manhole.
- Central location for an optional inspection port.
- Lid designed with a large-grip handle and sump lid puller for easy removal of the snap-on lid.

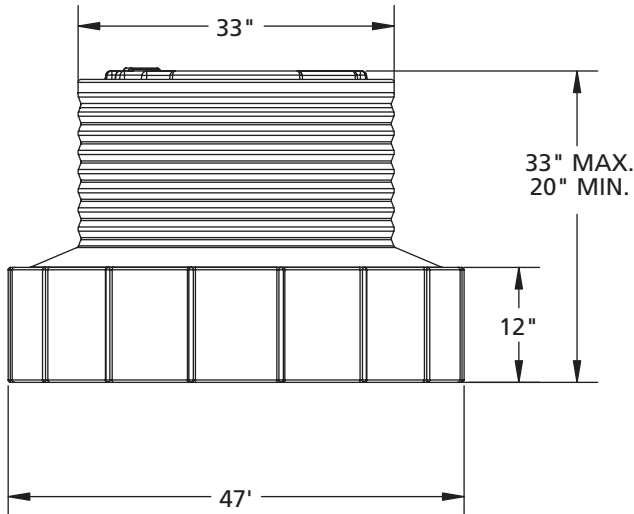
MODEL	DESCRIPTION
TSD-4736	Tank Sump, Deep Burial, 47" Base, fits 36" Manhole
TSD-4736-IP	TSD-4736 Sump with Inspection Port factory installed
TSM-4736	Tank Sump, Medium Burial, 47" Base, fits 36" Manhole
TSM-4736-IP	TSM-4736 Sump with Inspection Port factory installed
TSS-4736	Tank Sump, Shallow Burial, 47" Base, fits 36" Manhole
TSS-4736-IP	TSS-4736 Sump with Inspection Port factory installed
260-036-01	TSM-4736 Sump Lid Replacement
MA-22	Manway Adaptor, 22"
MA-24	Manway Adaptor, 24"
IP-400	Inspection Port
IP-400-B	Inspection Port - FEP style with well cap



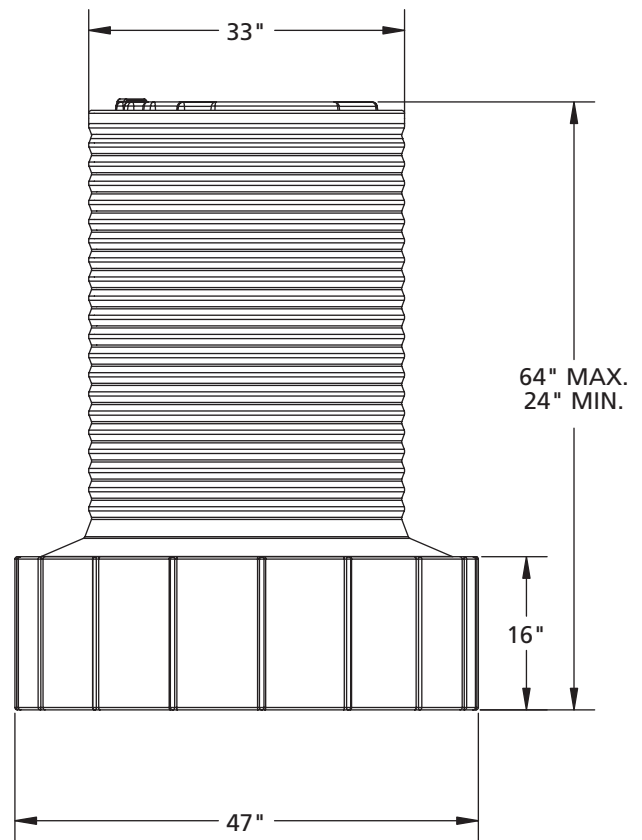


4736 Series One-Piece Tank Sump

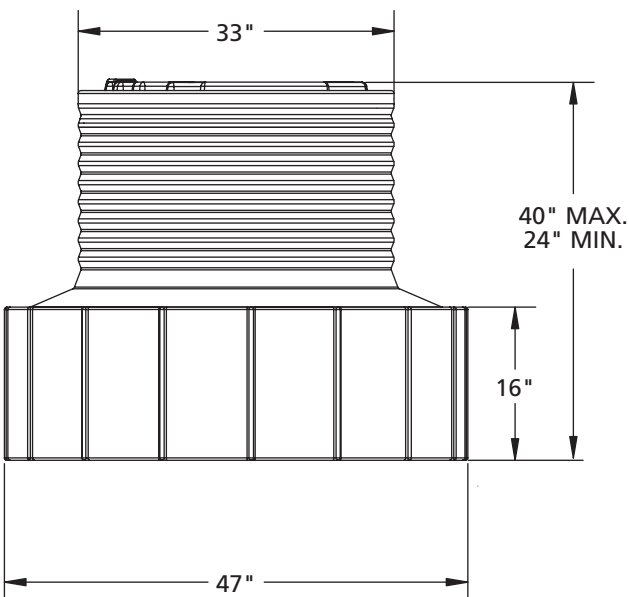
**TSS-4736 TANK SUMP
SHALLOW BURIAL**



**TSD-4736 TANK SUMP
DEEP BURIAL**



**TSM-4736 TANK SUMP
MEDIUM BURIAL**



Watertight Fiberglass Turbine Sump Packages PHIL-TITE

Available in both single and double wall configurations. Each package includes a patented watertight multipoint sump shield.

Our octagonal base sumps are a two piece design eliminating the need to work in a confined space during installation. Eight flat panels are molded into the bottom section to provide 90° pipe entries.

Most single wall models are available with or without bottom for various mounting options.

Double wall models are only available for mounting to tank collar.



**T MODEL
TURBIINE SUMPS**



**T MODEL TWO PIECE
OCTAGONAL TURBINE SUMPS**

Design Highlights & Advantages

- Constructed from rugged ¼" thick, three layer hand layup FRP with a vapor, watertight gel coat interior wall surface.
- White gel coat interior provides a vapor, watertight barrier and superior visibility.
- Available in 42" and 48" diameter.
- Sump reducers are available to fit under a 42" or 36" manhole.
- Double wall models are shipped under vacuum with a vacuum gauge installed for verification at site of sealed interstitial.

Note: Two week lead time on all fiberglass parts.

Model Number Reference Chart

XXXXXX-X/X-XX-X
1 a b 2 3 4

1) Sump Type

T = Turbine

a) Depth

M = Medium burial

D = Deep burial

b) Size

4236 = 42" dia. base, Minimum manhole dia. 36"

4836 = 48" dia. base, Minimum manhole dia. 36"

4842 = 48" dia. base, Minimum manhole dia. 42"

2) Watertight Shield Opening Options

0/0 = Turbine cover, no openings

3) Base Options

OB = Octagonal base with bottom

RC = Round collar mount base

OC = Octagonal collar mount base

4) Interstitial Monitoring Method

S = Single wall, none

H = Hydrostatic (brine)

V = Vacuum

Watertight Turbine Sump Packages

PHIL-TITE

42" & 48" Single Wall Cylindrical Turbine Sumps

MODEL	WALL TYPE	RISER BASE DIA.	MIN. MANHOLE SIZE	SEAM KITS RECOMMENDED	BOTTOM
T(X)A4236-0/0-RC-S	Single	42	36	2	No
T(X)A4836-0/0-RC-S	Single	48	36	2	No

Seam kits are not included. See bottom of page for part number and pricing.

42" Single & Double Wall Octagonal Turbine Sumps

MODEL	WALL TYPE	OCTAGONAL BASE DIA.	MIN. MANHOLE SIZE	RISER DIA.	BOTTOM	SEAM KITS RECOMMENDED
T(X)4236-0/0-OC-S	Single	42	36	39	No	2
T(X)4236-0/0-OB-S**	Single	42	36	39	Yes	1
T(X)4236-0/0-OC-H	Double	42	36	39	No	4
T(X)4236-0/0-OC-V	Double	42	36	39	No	4

Seam kits are not included. See bottom of page for part number and pricing.

**Medium bury available from both Redding, Calif., and Madison, Wis., FFS facilities.

48" Single & Double Wall Octagonal Turbine Sumps

MODEL	WALL TYPE	OCTAGONAL BASE DIA.	MIN. MANHOLE SIZE	RISER DIA.	BOTTOM	SEAM KITS RECOMMENDED
T(X)A4836-0/0-OC-S	Single	48	36	42	No	3
T(X)A4836-0/0-OB-S	Single	48	36	42	Yes	2
T(X)A4842-0/0-OC-S	Single	48	42	42	No	3
T(X)A4842-0/0-OB-S	Single	48	42	42	Yes	2
T(X)4836-0/0-OC-H	Double	48	36	42	No	4
T(X)4836-0/0-OC-V	Double	48	36	42	No	4
T(X)4842-0/0-OC-H	Double	48	42	42	No	4
T(X)4842-0/0-OC-V	Double	48	42	42	No	4

Seam kits are not included. See bottom of page for part number and pricing.

Packages include watertight sump shield, sump reducer and sump riser.

Replace (X) in part number with burial depth available:

(M) = Medium

(D) = Deep

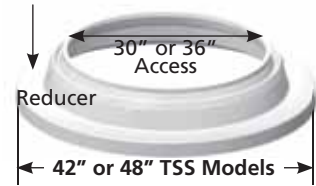
* Overall height.



30" & 36" Access Turbine Watertight Sump Shield Packages

PHIL-TITE

MODEL	ACCESS OPENING	RISER DIA.	MIN. MANHOLE DIA.	# OF OPENINGS	SEAM KITS RECOMMENDED
TSS-4236	30"	42"	36"	0	1
TSS-4836	30"	48"	36"	0	1
TSS-XS36	30"	Xerxes 33"	36"	0	1
TSS-4242-SW	36"	42"	42"	0	1
TSS-4842	36"	48"	42"	0	1



Package includes watertight sump shield and riser reducer.

Seam kits are not included. See bottom of page for part number and pricing.

Fiberglass Seam Adhesive Kit

MODEL	DESCRIPTION
FG-SEAMKIT	Includes matte, resin, putty and catalyst for one fiberglass seam single or double wall. Note: Double wall applications may require 2 seam kits per seam.

Fiberglass Replacement Parts

MODEL	DESCRIPTION
602166001	Sump shield latch/catch
TRS-36	36" Sump shield, RS NWT
TSB-4239-SW	Octagon base, 42/39, 18" tall, SW
TSB-4842-SW	Octagon base, 48/42, 30" tall, SW
602212001	33" Sump shield gasket
602212002	40" Sump shield gasket

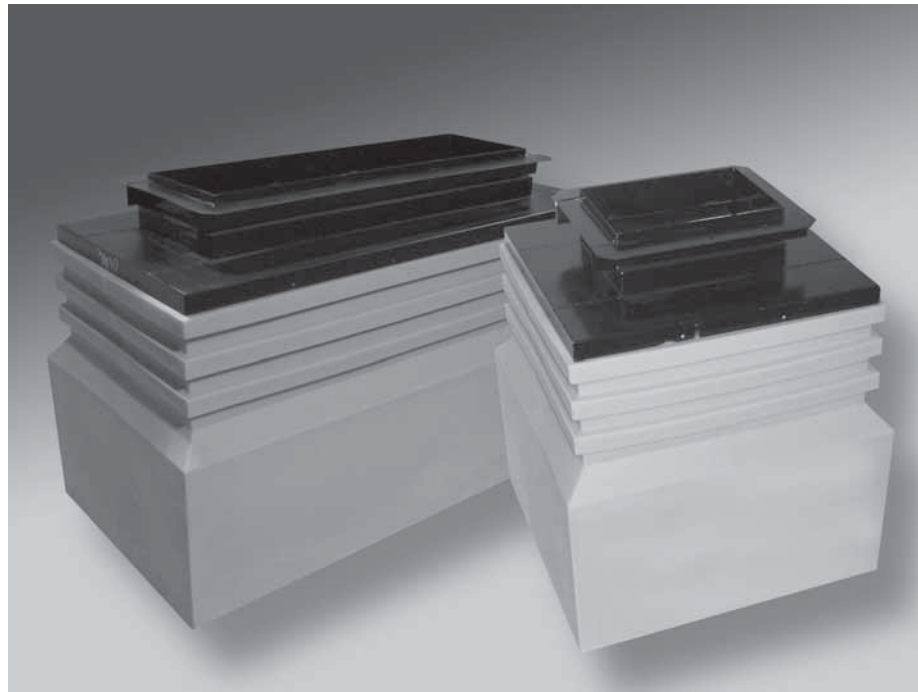
“Large Mouth” LM Series Dispenser Sump



The Large Mouth series dispenser sump modular design provides versatility and ease of installation.

There are six polyethylene bases in three lengths and two depths. These bases have a large 22" wide by 24", 36" or 48" long openings, easing the installation of entry boots and piping connections. The ribbed riser can be cut down in 3" increments in the field to achieve proper pipe slopes with respect to grade.

A variety of Large Mouth Tops (LMTs) are available to match nearly every dispenser model. The lids are corrosion resistant painted steel to which shear valves and dispenser frames are mounted.



Design Highlights & Advantages

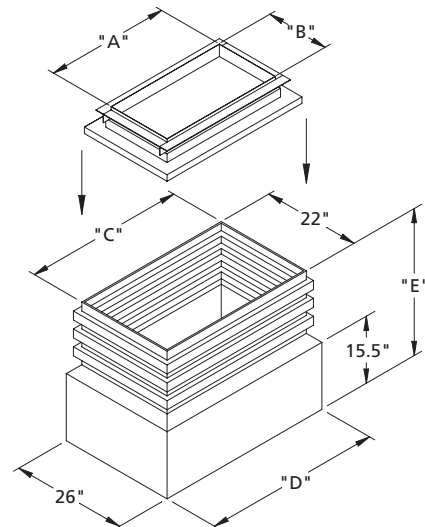
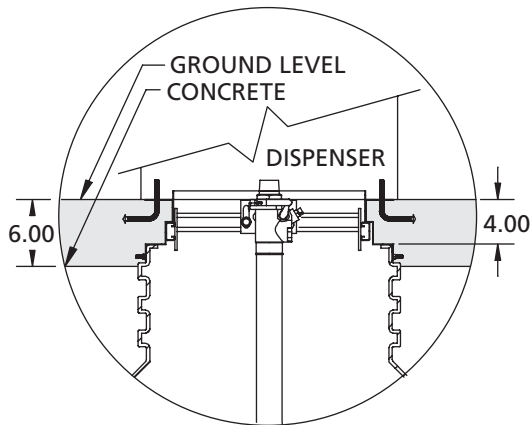
- 22" wide by 24", 36" or 48" long opening on base gives plenty of room for boot, fitting and monitor installation.
- Available in medium and deep burial depths to properly maintain slope.
- The base widens to a spacious 26" where entry boots and pipe connections are made.
- Height modifications are accomplished by trimming of the base at the ribs.
- Stabilizer Bar Kits (SBKs) mount into welded strut channels for shear valve mounting. One SBK is required for each shear valve and is purchased separately.
- The Large Mouth Dispenser Sump is UL and ULC listed.



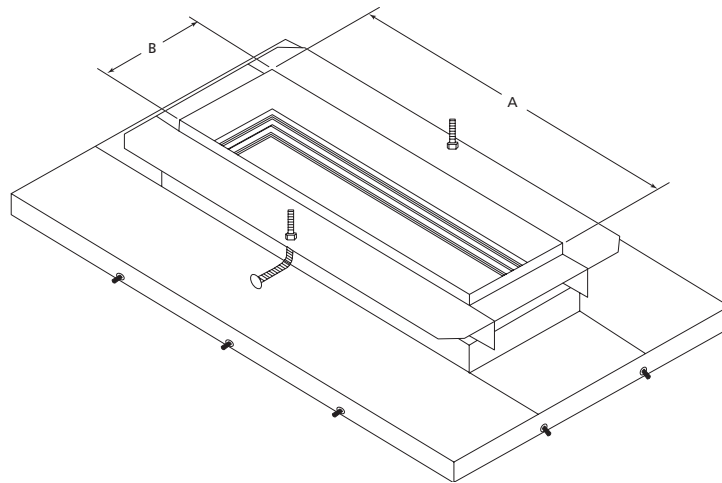
Large Mouth Polyethylene Dispenser Sumps

MEDIUM MODEL	"E"	DEEP MODEL	"E"	"A"	"B"	"C"	"D"	SBK #
LMM-1410	28"	LMD-1410	43"	13.50"	9.75"	24"	28"	SBK-2
LMM-1710	28"	LMD-1710	43"	17.00"	10.38"	24"	28"	SBK-2
LMM-1913-T	28"	LMD-1913-T	43"	19.00"	12.00"	24"	28"	SBK-25
LMM-2010	28"	LMD-2010	43"	20.50"	10.00"	24"	28"	SBK-2
LMM-2018	28"	LMD-2018	43"	20.81"	18.31"	24"	28"	SBK-3
LMM-2212	28"	LMD-2212	43"	22.50"	11.25"	36"	40"	SBK-25
LMM-2212-24	28"	LMD-2212-24	43"	22.5"	11.25"	24"	28"	SBK-25
LMM-2313-T	28"	LMD-2313-T	43"	23.00"	12.00"	36"	40"	SBK-25
LMM-2407	28"	LMD-2407	43"	23.75"	7.50"	36"	40"	SBK-1
LMM-2409	28"	LMD-2409	43"	23.75"	9.00"	36"	40"	SBK-2
LMM-2518	28"	LMD-2518	43"	24.75"	17.75"	36"	40"	SBK-3
LMM-2715	28"	LMD-2715	43"	27.00"	15.00"	36"	40"	SBK-3
LMM-2811	28"	LMD-2811	43"	28.50"	11.00"	36"	40"	SBK-25
LMM-2913	28"	LMD-2913	43"	29.75"	13.25"	36"	40"	SBK-25
LMM-2915	28"	LMD-2915	43"	29.75"	15.75"	36"	40"	SBK-3
LMM-3109	28"	LMD-3109	43"	31.00"	9.50"	36"	40"	SBK-2
LMM-3610	28"	LMD-3610	43"	36.00"	10.25"	48"	52"	SBK-2
LMM-3617	28"	LMD-3617	43"	36.00"	17.25"	36"	40"	SBK-3
LMM-3914	28"	LMD-3914	43"	38.75"	14.00"	48"	52"	SBK-25
LMM-4018	28"	LMD-4018	43"	39.75"	17.75"	48"	52"	SBK-3
LMM-4109	28"	LMD-4109	43"	41.50"	9.38"	48"	52"	SBK-2
LMM-4111	28"	LMD-4111	43"	41.50"	11.00"	48"	52"	SBK-25
LMM-4113	28"	LMD-4113	43"	41.50"	13.25"	48"	52"	SBK-25
LMM-4115	28"	LMD-4115	43"	41.50"	15.75"	48"	52"	SBK-3

Medium and Deep Model numbers listed include base and top, stabilizer bar kits, (SBK) sold separately.



Large Mouth Polyethylene Dispenser Sumps



LMT Sump Top List

MODEL	"A" OPENING SIZE	"B" OPENING SIZE	SBK #	LARGE MOUTH SUMP BASE (LBx) SIZE
LMT-1410	13.50"	9.75"	SBK-2	2400
LMT-1710	17.00"	10.38"	SBK-2	2400
LMT-1913-T	19.00"	12.00"	SBK-25	2400
LMT-2010	20.50"	10.00"	SBK-2	2400
LMT-2018	20.81"	18.31"	SBK-3	2400
LMT-2212	22.50"	11.25"	SBK-25	3600
LMT-2212-24	23.50"	11.25"	SBK-25	2400
LMT-2313-T	23.00"	12.00"	SBK-25	3600
LMT-2407	23.75"	7.50"	SBK-1	3600
LMT-2409	23.75"	9.00"	SBK-2	3600
LMT-2518	24.75"	17.75"	SBK-3	3600
LMT-2715	27.00"	15.00"	SBK-3	3600
LMT-2811	28.50"	11.00"	SBK-25	3600
LMT-2913	29.75"	13.25"	SBK-25	3600
LMT-2915	29.75"	15.75"	SBK-3	3600
LMT-3109	31.00"	9.50"	SBK-2	3600
LMT-3610	36.00"	10.25"	SBK-2	4800
LMT-3617	36.00"	17.25"	SBK-3	3600
LMT-3914	38.75"	14.00"	SBK-25	4800
LMT-4018	39.75"	17.75"	SBK-3	4800
LMT-4109	41.50"	9.38"	SBK-2	4800
LMT-4111	41.50"	11.00"	SBK-25	4800
LMT-4113	41.50"	13.25"	SBK-25	4800
LMT-4115	41.50"	15.75"	SBK-3	4800

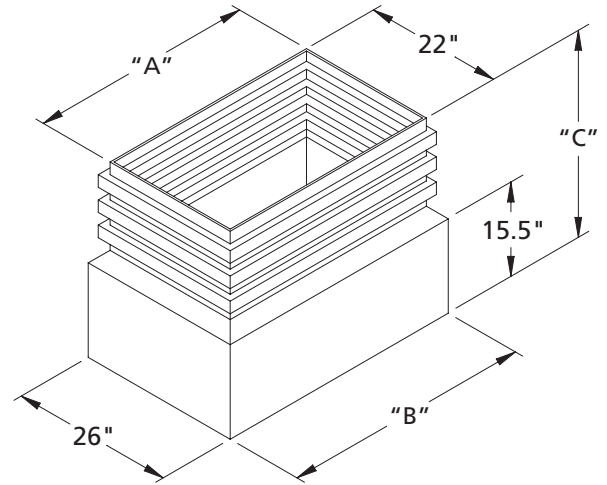
Does not include base and/or stabilizer bar kit

Large Mouth Polyethylene Dispenser Sumps



Dispenser Sump Base List - Polyethylene

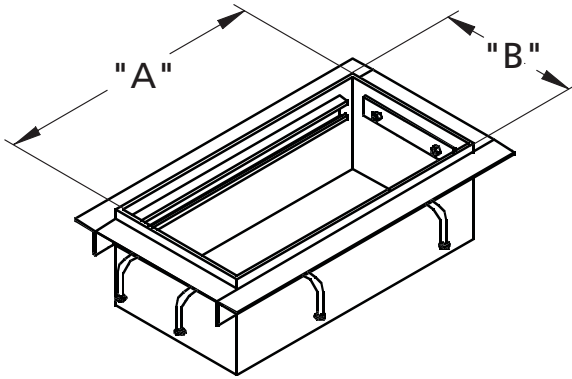
MODEL	DIM. "A"	DIM. "B"	DIM. "C"
LBM-2400	24"	28"	28"
LBM-3600	36"	40"	28"
LBM-4800	48"	52"	28"
LBD-2400	24"	28"	43"
LBD-3600	36"	40"	43"
LBD-4800	48"	52"	43"



Classic Series Dispenser Pans



Dispenser Pans (DP models) are an extremely cost effective alternative where shallow burial is permitted. Each model of dispenser pan is furnished with concrete anchor bolts and utilized galvanized steel top frames for anchoring the dispenser.



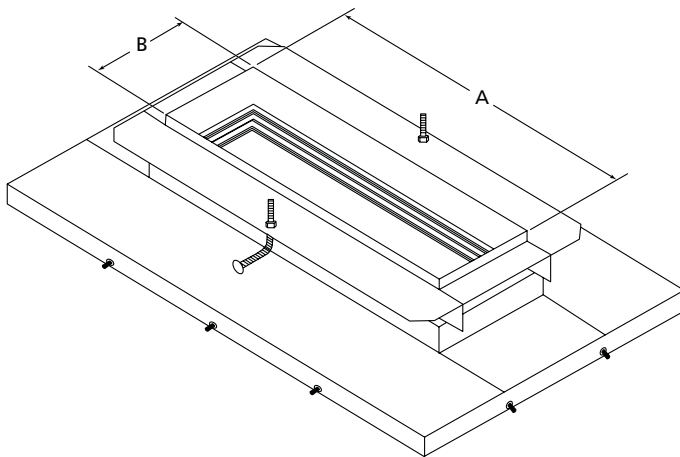
MODEL	DESCRIPTION	DIM. "A"	DIM. "B"	BAR KIT*
DP-1816	Dispenser Pan 13 3/4" x 11 1/4"	13 3/4"	11 1/4"	SBK-2
DP-2014	Dispenser Pan 16 1/2" x 10 1/2"	16 1/2"	10 1/2"	SBK-2
DP-2816	Dispenser Pan 23" x 11 3/4"	23"	11 3/4"	SBK-2
DP-4721	Dispenser Pan 42" x 16"	42"	16"	SBK-3



Single & Double Wall Fiberglass Dispenser Sumps

Designed for the installer, the large mouth series dispenser sumps provide easy access to piping connections. The dispenser frame and top are factory assembled and field glassed onto the sump after piping connections are completed. Stabilizer Bar Kits, (SBK) for mounting emergency shear valves, are track mount design and adjust in all planes for proper alignment of the shear valve to the dispenser piping.

Note: Consult Customer Service to verify lead time on all double wall dispenser sumps.



LMT DISPENSER FRAME

Model Number Reference Chart

XXX-XXXX-XX
1 2a 2b 3

- 1) Sump Style & Depth
LMM = Large mouth medium bury
- 2) Dispenser Frame Size
2a = "A" length
2b = "B" length
- 3) Single or Double Wall
SW = Single wall
DW = Double wall

Design Highlights & Advantages

- Powder coated steel frame.
- Dispenser frame factory assembled and watertight sealed.
- Water dam frame design prevents surface water from entering sump.
- Strong three-layer hand layup FRP.
- Ease of ordering. Sumps include dispenser frames, mounting hardware and matte resing kit for sealing to the sump.
- Stackable for reduced freight and storage space (single wall only).
- Double wall sumps are available for hydrostatic (brine) or vacuum monitoring and are shipped under vacuum with factory installed vacuum gauge.

Note: Two week lead time on all fiberglass parts.



Single Wall Large Mouth Fiberglass Dispenser Sumps

MODEL	DIM. "A"	DIM. "B"	DIM. "C"	SBK #
LMM-2407-S-R	23.75"	7.50"	36"	SBK-1
LMM-3617-C-S-R	36.00"	17.25"	36"	SBK-3
LMM-3914-S-R	38.75"	14.00"	52"	SBK-25

Models shown include:

- Base
- Top frame
- Matte/Resin kit

Stabilizer Bar Kits (SBK) must be ordered separately.



Double Wall Large Mouth Fiberglass Dispenser Sumps

MODEL	DIM. "A"	DIM. "B"	DIM. "C"	SBK #
LMM-2407-D-R	23.75"	7.50"	36"	SBK-1
LMM-3617-C-D-R	36.00"	17.25"	36"	SBK-3
LMM-3914-D-R	38.75"	14.00"	52"	SBK-25

Models shown include:

- Base
- Top frame
- Matte/Resin kit

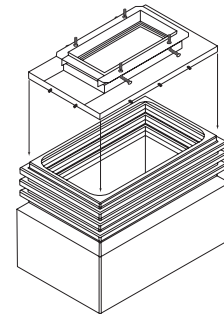
Stabilizer Bar Kits (SBK) must be ordered separately.

Large Mouth Dispenser Sumps



The "Large Mouth" sump employs a 22" wide base opening with lengths of 24", 36" and 48". A removable powder coated steel cover comes in a variety of different configurations to match nearly all popular dispensers. Height modifications can be made in the field by trimming the base with standard tools.

Both styles of APT dispenser sumps have bases constructed of tough high-density polyethylene and both styles have brackets for mounting impact valve stabilizer bar kits, SBKs (ordered separately). One SBK is required for each pipe that enters the dispenser. The SBK model is shown in the charts next to the sump model.



Bennett — Large Mouth Dispenser Sumps

SERIES	MODEL	POLYETHYLENE		SBK #
		MEDIUM BURIAL	DEEP BURIAL	
Horizon/Big Squirt	2200 Series	LMM-2010	LMD-2010	SBK-2
Horizon	2300 Series	LMM-2913	LMD-2913	SBK-25
	2400 Series	LMM-4113	LMD-4113	SBK-25
	3000 Series	LMM-1410	LMD-1410	SBK-2
	6000 Series	LMM-1410	LMD-1410	SBK-2
	9000 Series	LMM-4109	LMD-4109	SBK-2
	9100 Series	LMM-4109	LMD-4109	SBK-2

RDR — Large Mouth Dispenser Sumps

SERIES	MODEL	POLYETHYLENE		SBK #
		MEDIUM BURIAL	DEEP BURIAL	
RDR	N/A	LMM-2018	LMD-2018	SBK-3

Schlumberger—Large Mouth Dispenser Sumps

SERIES	MODEL	POLYETHYLENE		SBK #
		MEDIUM BURIAL	DEEP BURIAL	
Centurion Narrow	XXXX1	LMM-2915	LMD-2915	SBK-3
Centurion Wide	XXXX2	LMM-4115	LMD-4115	SBK-3
4200 Series	N/A	LMM-3109	LMD-3109	SBK-2
	435, 440, 640, 650	LMM-1913T	LMD-1913T	SBK-25
4600 Series	N/A	LMM-3109	LMD-3109	SBK-2
4700 Series	N/A	LMM-3109	LMD-3109	SBK-2
4800 Series	N/A	LMM-3109	LMD-3109	SBK-2
4900 Series	N/A	LMM-3109	LMD-3109	SBK-2
4300 Series	N/A	LMM-4109	LMD-4109	SBK-2
4400 Series	N/A	LMM-4109	LMD-4109	SBK-2
4100 Series	N/A	LMM-3109	LMD-3109	SBK-2
2300 Series	N/A	LMM-2811	LMD-2811	SBK-25
2400 Series	N/A	LMM-4111	LMD-4111	SBK-25

Large Mouth Polyethylene Dispenser Sumps



Gasboy — Large Mouth Dispenser Sumps

MODEL	POLYETHYLENE		SBK #
	MEDIUM BURIAL	DEEP BURIAL	
215A	LMM-1410	LMD-1410	SBK-2
216A	LMM-1410	LMD-1410	SBK-2
9140A	LMM-2313T	LMD-2313T	SBK-25
9140AX	LMM-2313T	LMD-2313T	SBK-25
9152A	LMM-1913T	LMD-1913T	SBK-25
9152ATW1	LMM-2313T	LMD-2313T	SBK-25
9152AX	LMM-1913T	LMD-1913T	SBK-25
9152AXTW1	LMM-2313T	LMD-2313T	SBK-25
9152AXTW2	LMM-2313T	LMD-2313T	SBK-25
9153A	LMM-1913T	LMD-1913T	SBK-25
9153AHC	LMM-1913T	LMD-1913T	SBK-25
9153ATW1M	LMM-2313T	LMD-2313T	SBK-25
9153ATW2	LMM-2313T	LMD-2313T	SBK-25
9153AXTW2	LMM-2313T	LMD-2313T	SBK-25
9850AXTW2	LMM-2313T	LMD-2313T	SBK-25
9852ATW2	LMM-2313T	LMD-2313T	SBK-25
9852AXTW2	LMM-2313T	LMD-2313T	SBK-25
9853ATW2	LMM-2313T	LMD-2313T	SBK-25
9853AXTW2	LMM-2313T	LMD-2313T	SBK-25
9153AX	LMM-1913T	LMD-1913T	SBK-25
9153AXTW1	LMM-2313T	LMD-2313T	SBK-25
9753EXIL	LMM-1913T	LMD-1913-T	SBK-25
9840A	LMM-2313T	LMD-2313T	SBK-25
9840AX	LMM-2313T	LMD-2313T	SBK-25
9850A	LMM-1913T	LMD-1913T	SBK-25
9850AX	LMM-1913T	LMD-1913T	SBK-25
9850AXTW1	LMM-2313T	LMD-2313T	SBK-25
9852A	LMM-1913T	LMD-1913T	SBK-25
9852ATW1	LMM-2313T	LMD-2313T	SBK-25
9852AX	LMM-1913T	LMD-1913T	SBK-25
9852AXTW1	LMM-2313T	LMD-2313T	SBK-25
9853A	LMM-1913T	LMD-1913T	SBK-25
9853AHC	LMM-1913T	LMD-1913T	SBK-25
9853ATW1M	LMM-2313T	LMD-2313T	SBK-25
9853AX	LMM-1913T	LMD-1913T	SBK-25
9853AXTW1	LMM-2313T	LMD-2313T	SBK-25
ATLAS	LMM-2313T	LMD-2315T	SBK-25



Large Mouth Polyethylene Dispenser Sumps

Gilbarco — Large Mouth Dispenser Sumps

SERIES	MODEL	POLYETHYLENE		SBK #
		MEDIUM BURIAL	DEEP BURIAL	
Advantage Single Hose	B71XXX	LMM-4115	LMD-4115	SBK-3
Advantage Six Hose	N/A	LMM-4115	LMD-4115	SBK-3
Advantage X+0 (36" frame)	B7AXXX	LMM-2915	LMD-2915	SBK-3
Advantage X+0 , X+1 (48" frame)	B7XXXX	LMM-4115	LMD-4115	SBK-3
Eclipse	ALL	LMM-2212	LMD-2212	SBK-25
Encore (40" sump length)	ALL	LMM-3617	LMD-3617	SBK-3
Encore (52" sump length)	ALL	LMM-3617	LMD-3617	SBK-3
Highhose Salesmaker Pro	ABXXXXA	LMM-2313T	LMD-2313T	SBK-25
Advantage MPD	N/A	LMM-4115	LMD-4115	SBK-3
Advantage Quad/Duel	N/A	LMM-2915	LMD-2915	SBK-3
Highhose salesmaker 4/4A	N/A	LMM-2313T	LMD-2313T	SBK-25
Highline 111B 21" frame	AC6921A	LMM-2010	LMD-2010	SBK-2
Highline 111B 27" frame	AC3921A	LMM-2010	LMD-2010	SBK-2
Highline High Gallonage	AC6942A	LMM-2010	LMD-2010	SBK-2
Highline Ultra-Hi	AC6992A-MS1	LMM-2010	LMD-2010	SBK-2
Legacy	ALL	LMM-2407	LMD-2407	SBK-1
Trimline 21" frame and 27" frame	252-0	LMM-2010	LMD-2010	SBK-2
Highhose MPD-X	N/A	LMM-3610	LMD-3610	SBK-2
Commercial High Gallonage and Ultra High	N/A	LMM-2010	LMD-2010	SBK-2
Encore Super Hi	ALL	LMM-3617	LMD-3617	SBK-3
Encore Ultra Hi	ALL	LMM-3617	LMD-3617	SBK-3
Highhose Salesmaker-2H	AM62XXA	LMM-2010	LMD-2010	SBK-2
Highline Salesmaker 21" frame and 27" Frame	AC1921A-S1	LMM-1410	LMD-1410	SBK-2
Highline Satellite	AC-4093-S1	LMM-2010	LMD-2010	SBK-2
	AC-6093-S1	LMM-2010	LMD-2010	SBK-2
Highline Super-Hi	AC4982A-MS1	LMM-2010	LMD-2010	SBK-2
	AC7982A-MS1	LMM-2010	LMD-2010	SBK-2
Highline Ultra-Hi	AC4992A-MS1	LMM-2010	LMD-2010	SBK-2
	AC7992A-MS1	LMM-2010	LMD-2010	SBK-2

Reliance — Large Mouth Dispenser Sumps

SERIES	MODEL	POLYETHYLENE		SBK #
		MEDIUM BURIAL	DEEP BURIAL	
G2000	ALL	LMM-2715	LMD-2715	N/A
G6000	ALL	N/A	N/A	N/A
G7000	ALL	N/A	N/A	N/A



Large Mouth Polyethylene Dispenser Sumps

Tokheim—Large Mouth Dispenser Sumps

SERIES	MODEL	POLYETHYLENE		SBK #
		MEDIUM BURIAL	DEEP BURIAL	
N/A	1248	LMM-1913T	LMD-1913T	SBK-25
N/A	1250	LMM-1913T	LMD-1913T	SBK-25
N/A	162	LMM-1913T	LMD-1913T	SBK-25
N/A	262	LMM-1913T	LMD-1913T	SBK-25
N/A	311	LMM-2518	LMD-2518	SBK-3
N/A	312	LMM-2518	LMD-2518	SBK-3
N/A	322	LMM-2518	LMD-2518	SBK-3
N/A	324	LMM-2518	LMD-2518	SBK-3
N/A	785	LMM-1913T	LMD-1913T	SBK-25
Centurion (narrow)	XXXX1	LMM-2915	LMD-2915	SBK-3
Centurion (wide)	XXXX2	LMM-4115	LMD-4115	SBK-3
	411	LMM-4018	LMD-4018	SBK-3
	413	LMM-4018	LMD-4018	SBK-3
	414	LMM-4018	LMD-4018	SBK-3
	422	LMM-4018	LMD-4018	SBK-3
	424	LMM-4018	LMD-4018	SBK-3
	426	LMM-4018	LMD-4018	SBK-3
	428	LMM-4018	LMD-4018	SBK-3
	220	LMM-1710	LMD-1710	SBK-2
	222	LMM-1710	LMD-1710	SBK-2
	330	LMM-1710	LMD-1710	SBK-2
	333	LMM-1710	LMD-1710	SBK-2
	793	LMM-1410	LMD-1410	SBK-2

Universal—Large Mouth Dispenser Sumps

SERIES	MODEL	POLYETHYLENE		SBK #
		MEDIUM BURIAL	DEEP BURIAL	
Univision	UV-9300	LMM-4111	LMD-4111	SBK-25
	UV-9400	LMM-4111	LMD-4111	SBK-25
Univision	UV-9200	LMM-2811	LMD-2811	SBK-25
3000 Narrow Base	ALL	LMM-1410	LMD-1410	SBK-2
3000 Wide Base	ALL	LMM-1710	LMD-1710	SBK-2
3500 Narrow Base	ALL	LMM-1410	LMD-1410	SBK-2
3500 Wide Base	ALL	LMM-1710	LMD-1710	SBK-2
4000 Narrow Base	ALL	LMM-1410	LMD-1410	SBK-2
4000 Wide Base	ALL	LMM-1710	LMD-1710	SBK-2
8000	ALL	LMM-3914	LMD-3914	SBK-25
Univision	UV-9100	LMM-2811	LMD-2811	SBK-25

Large Mouth Polyethylene Dispenser Sumps



Wayne—Large Mouth Dispenser Sumps

SERIES	MODEL	POLYETHYLENE		SBK #
		MEDIUM BURIAL	DEEP BURIAL	
N/A	DS/375/19	LMM-2409	LMD-2409	SBK-2
N/A	DS/585/19E	LMM-2409	LMD-2409	SBK-2
N/A	DS/585/EG	LMM-2409	LMD-2409	SBK-2
V395 Vista Series	N/A	LMM-4111	LMD-4111	SBK-25
V580 Vista Series	N/A	LMM-2811	LMD-2811	SBK-25
V585 Vista Series	N/A	LMM-2811	LMD-2811	SBK-25
V590 Vista Series	N/A	LMM-4111	LMD-4111	SBK-25
V289 Series	N/A	LMM-2811	LMD-2811	SBK-25
360 Series	N/A	LMM-2409	LMD-2409	SBK-2
370 Series	N/A	LMM-2409	LMD-2409	SBK-2
389 Series	N/A	LMM-2409	LMD-2409	SBK-2
V388 Vista Series	N/A	LMM-2811	LMD-2811	SBK-25
V389 Vista Series	N/A	LMM-2811	LMD-2811	SBK-25
V390 Vista Series	N/A	LMM-4111	LMD-4111	SBK-25
V399 Vista Series	N/A	LMM-4111	LMD-4111	SBK-25
G2000 Series	N/A	LMM-2715	LMD-2715	SBK-3
390 Series	N/A	LMM-4111	LMD-4111	SBK-25
490 Series	N/A	LMM-4111	LMD-4111	SBK-25
V390 Vista Series	N/A	LMM-4111	LMD-4111	SBK-25
V490 Vista Series	N/A	LMM-4111	LMD-4111	SBK-25
V595-Series	N/A	LMM-4111	LMD-4111	SBK-25
Ovation Series	ALL	LMM-3914	LMD-3914	SBK-25
350 Series	N/A	LMM-2409	LMD-2409	SBK-2
387 Series	N/A	LMM-2409	LMD-2409	SBK-2
V387 Vista Series	N/A	LMM-2811	LMD-2811	SBK-25
Reliance	N/A	LMM-2715	LMD-2715	SBK-3

Installation Tools, Sealants and Lubricants



At FFS, one of our primary design directives is to avoid the use of specialized tools whenever possible. There are, however, situations where this is unavoidable. We have also seen several instances where a special tool may not be required, but its use expedites installation, saving labor and money in the field. For these rare cases, we have developed several low cost tools to assist in the installation of APT products. FFS also recommends certain sealants and lubricants with our APT products. In the event that these are not available in your area, or even for your convenience, we offer these products as part of our product line.

MODEL	DESCRIPTION
BPT-100	By Pass Tube, 30" length
BOS-103	Bostik 1100, 10.3 ounce tube
BTT-004	Bulkhead Tightening Tool for 4-stud Bulkhead Boots
BTT-008	Bulkhead Tightening Tool for 8-stud Bulkhead Boots
DBT-100	De-Burring Tool
SDT-004	Steel Drill Template for 4-stud entry boots
SDT-010	Steel Drill Template for 4, 8, and 10-stud entry boots
SLP-1000	Sump Lid Puller for TS-4542 and TS-4736 snap-on lid
TRK-100	Air Test Regulator for APT secondary contained piping
790-100-01	Loctite 515

Design Highlights & Advantages

- The Bulkhead Tightening Tools speed the installation of bulkhead boots while providing a more even distribution of torque than standard spanner wrenches.
- The reusable Steel Drill Template is a durable, faster alternative to the paper templates provided with each entry boot.
- The Air Test Regulator provides a fast, accurate means of testing the secondary layer of APT pipe integrity prior to charging with product.

Double Wall Cutting Tool



Design Highlights & Advantages

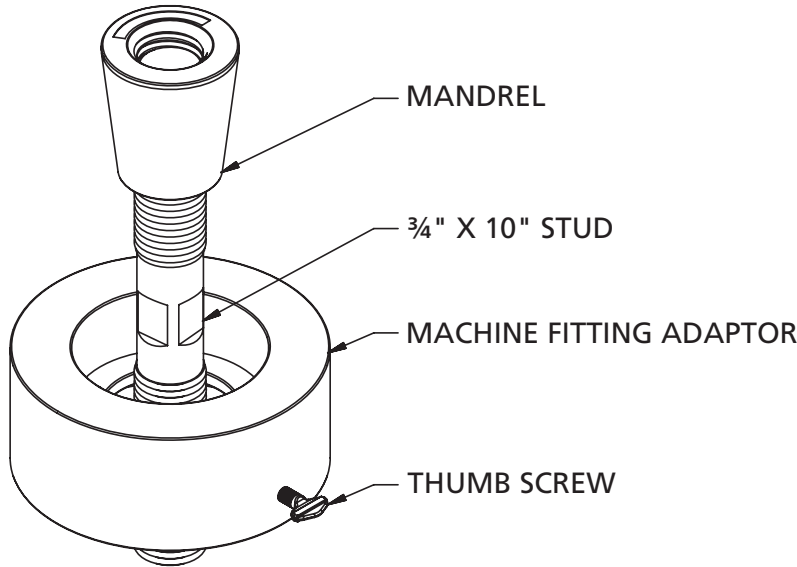
- The DWC Cutter simplifies secondary jacket removal without causing damage to the primary pipe.
- All DWC-XP Cutters are plated blue along with the letters "XP" stamped on to the body for easy identification.

MODEL	DESCRIPTION
DWC-XP-100	Double Wall Cutting Tool, 1.00"
DWC-XP-150	Double Wall Cutting Tool, 1.50"
DWC-XP-175	Double Wall Cutting Tool, 1.75"
DWC-XP-200	Double Wall Cutting Tool, 2.00"

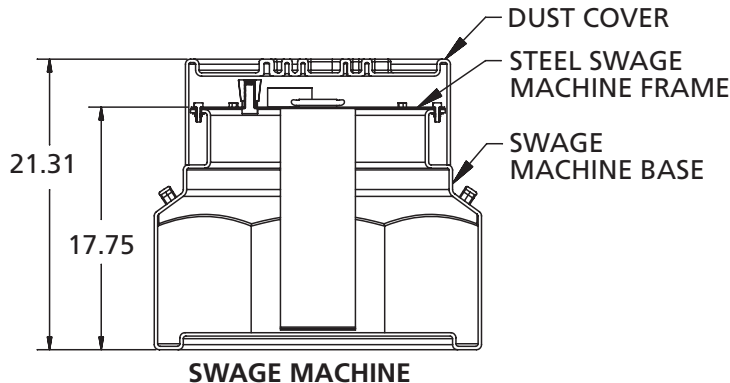
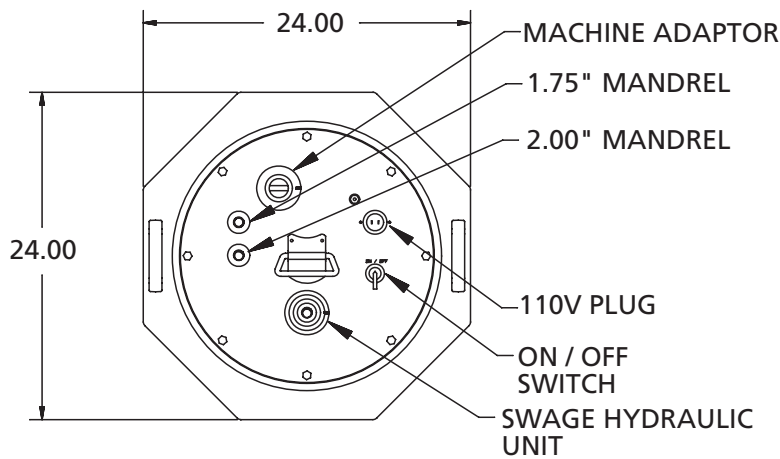


Swage Machine

The swage machine is used for installation of APT swage fittings. Competitive machines can be used provided they are modified with an APT swage kit. The machine is electrically driven, using the stainless steel fitting installed at the end of APT flex pipe. Each machine comes with the required mandrels and collars to swage all pipe sizes from 1 1/2" through 2".



SWAGE KIT



SWAGE MACHINE

Design Highlights & Advantages

- 110 volt standard.
- Includes all required components to swage 1 1/2", 1 3/4" and 2" fittings.
- Easy to use detailed operating instructions for hassle free assembly of swage fittings.
- Durable construction, capable of withstanding harsh field environments.
- Wide stable base construction.
- Swage kits available separately.

MODEL	DESCRIPTION
SMB-100	Swage Machine
SWK-150	Swage Tool Kit 1.50"
SWK-175	Swage Tool Kit 1.75"
SWK-200	Swage Tool Kit 2.00"





Clamshell Swivel Pipe Fittings

When using APT product piping, continuous runs eliminate the need for in-line joints. Installers make connections inside accessible containment sumps using APT swivel fittings. These fittings are manufactured from solid brass with two Viton O-ring protected in grooves located on the inside of the connector. Ductile iron clamps with zinc plating secure the fittings to the pipe.

MODEL	DESCRIPTION: MALE SWIVELS
MS-150-150	Male Swivel installs on the end of 1 ½" single/secondary contained pipe with 1.50" NPT
MS-150-200	Male Swivel installs on the end of 1 ½" single/secondary contained pipe with 2.00" NPT
MS-175-150	Male Swivel installs on the end of 1 ¾" single/secondary contained pipe with 1.50" NPT
MS-175-200	Male Swivel installs on the end of 1 ¾" single/secondary contained pipe with 2.00" NPT
MS-200-150	Male Swivel installs on the end of 2.00" single/secondary contained pipe with 1.50" NPT
MS-200-200	Male Swivel installs on the end of 2.00" single/secondary contained pipe with 2.00" NPT

MODEL	DESCRIPTION: FEMALE SWIVELS
FS-150-200	Female Swivel installs on the end of 1 ½" single/secondary contained pipe with 2.00" NPT
FS-175-150	Female Swivel installs on the end of 1 ¾" single/secondary contained pipe with 1.50" NPT
FS-175-200	Female Swivel installs on the end of 1 ¾" single/secondary contained pipe with 2.00" NPT
FS-200-150	Female Swivel installs on the end of 2.00" single/secondary contained pipe with 1.50" NPT
FS-200-200	Female Swivel installs on the end of 2.00" single/secondary contained pipe with 2.00" NPT

P-Series fitting to be used only for P-Series pipe.

Design Highlights & Advantages

- No special tools required for fitting installation.
- Connection threads are compatible with 1 ½" or 2" standard NPT pipe threads.
- Swivel fittings utilize APT's proven ductile iron pipe clamps.
- APT provides all sealants, clamps, bolts and installation instructions with every fitting.
- Male and female swivel fittings available.
- All APT male and female swivel pipe fittings are UL listed under file MH 17457 and ULC listed under file CMH 1613.

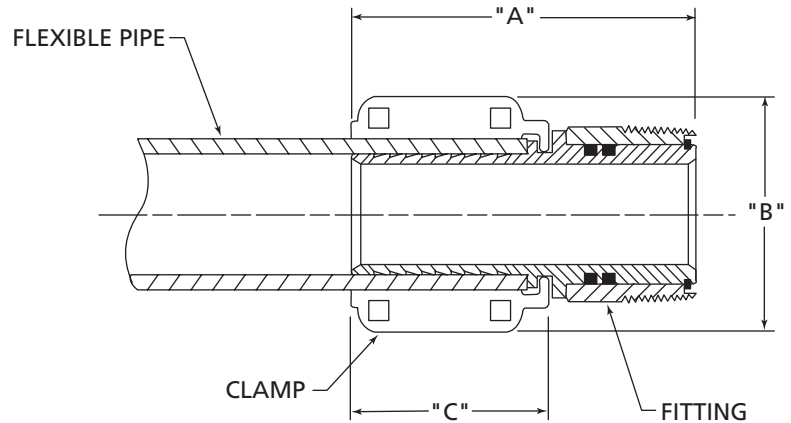




Clamshell Swivel Pipe Fittings

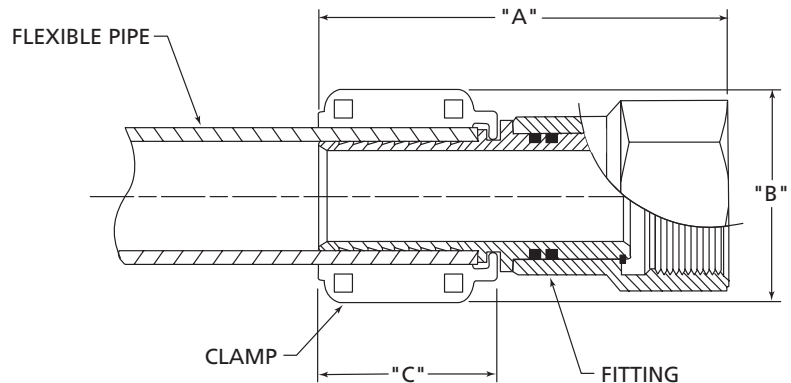
Male Swivel

MODEL	DIM. "A"	DIM. "B"	DIM. "C"
MS-150-150	4.500"	3.134"	2.115"
MS-150-150-B	4.500"	3.134"	2.115"
MS-150-200	4.190"	3.134"	2.115"
MS-150-200-B	4.190"	3.134"	2.115"
MS-175-150	4.500"	3.400"	2.115"
MS-175-150-B	4.500"	3.400"	2.115"
MS-175-200	4.190"	3.400"	2.115"
MS-175-200-B	4.190"	3.400"	2.115"
MS-200-150	5.500"	3.900"	3.218"
MS-200-150-B	5.500"	3.900"	3.218"
MS-200-200	5.190"	3.900"	3.218"
MS-200-200-B	5.190"	3.900"	3.218"



Female Swivel

MODEL	DIM. "A"	DIM. "B"	DIM. "C"
FS-150-150	5.937"	3.134"	2.115"
FS-150-150-B	5.937"	3.134"	2.115"
FS-150-200	5.630"	3.134"	2.115"
FS-150-200-B	5.630"	3.134"	2.115"
FS-175-150	5.937"	3.400"	2.115"
FS-175-150-B	5.937"	3.400"	2.115"
FS-175-200	5.630"	3.400"	2.115"
FS-175-200-B	5.630"	3.400"	2.115"
FS-200-150	6.937"	3.900"	3.218"
FS-200-150-B	6.937"	3.900"	3.218"
FS-200-200	6.630"	3.900"	3.218"
FS-200-200-B	6.937"	3.900"	3.218"



P-Series fitting to be used only for P-Series pipe.



Clamshell Non-Swivel Pipe Fittings

APT non-swivel pipe fittings provide the same high quality and environmental security as the APT swivel fittings, at a more economical price. APT nipple fittings are manufactured from one-piece solid brass and utilize the same ductile iron clamps as our swivel fittings.



Design Highlights & Advantages

- No special tools required for fitting installation.
- Connection threads are compatible with standard NPT pipe threads.
- Nipple fittings utilize APT proven ductile iron pipe clamps.
- The solid brass, one-piece design with NPT connectors offers fewer potential leak points.
- APT provides all sealants, clamps, bolts and installation instructions with every fitting.
- All APT male non-swivel pipe fittings are UL listed under file MH 17457 and ULC listed under file CMH 1613.

MODEL	DESCRIPTION
MN-075-075	Male Nipple installs on the end of ¾" single/secondary contained pipe with 0.75" NPT
MN-100-100	Male Nipple installs on the end of 1" single/secondary contained pipe with 1.00" NPT
MN-150-150	Male Nipple installs on the end of 1 ½" single/secondary contained pipe with 1.50" NPT
MN-175-150	Male Nipple installs on the end of 1 ¾" single/secondary contained pipe with 1.50" NPT
MN-200-150	Male Nipple installs on the end of 2" single/secondary contained pipe with 1.50" NPT
MN-175-200	Male Nipple installs on the end of 1 ¾" single/secondary contained pipe with 2.00" NPT
MN-200-200	Male Nipple installs on the end of 2" single/secondary contained pipe with 2.00" NPT
MN-250-250	Male Nipple installs on the end of 2 ½" single/secondary contained pipe with 2.50" NPT
MN-250-300	Male Nipple installs on the end of 2 ½" single/secondary contained pipe with 3.00" NPT

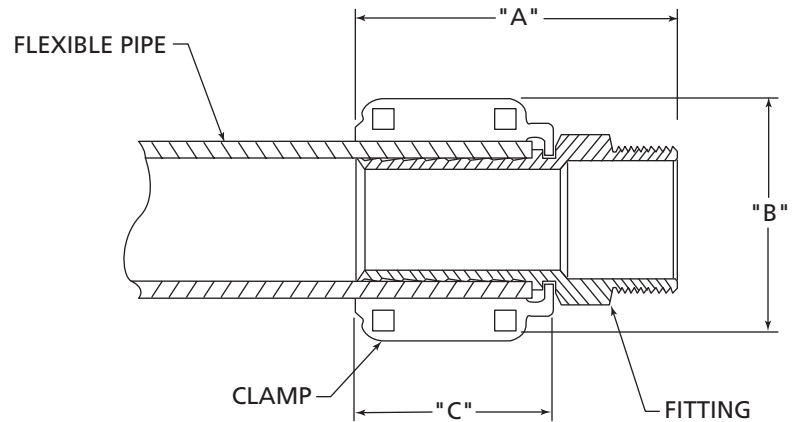
P-Series fitting to be used only for P-Series pipe.



Clamshell Non-Swivel Pipe Fittings



MODEL	DIM. "A"	DIM. "B"	DIM. "C"
MN-075-075	2.493"	2.320"	1.400"
MN-100-100	2.977"	2.570"	1.400"
MN-150-150	4.313"	3.134"	2.115"
MN-150-150-B	4.313"	3.134"	2.115"
MN-175-150	4.313"	3.400"	2.115"
MN-175-150-B	4.313"	3.400"	2.115"
MN-200-150	5.313"	3.900"	3.218"
MN-200-150-B	5.313"	3.900"	3.218"
MN-150-200	4.250"	3.134"	2.115"
MN-150-200-B	4.250"	3.134"	2.115"
MN-175-200	4.250"	3.400"	2.115"
MN-175-200-B	4.250"	3.400"	2.115"
MN-200-200	5.250"	3.900"	3.218"
MN-200-200-B	5.250"	3.900"	3.218"
MN-250-250	4.850"	5.140"	2.200"
MN-250-250-B	4.850"	5.140"	2.200"
MN-250-300	4.850"	5.140"	2.200"
MN-250-300-B	4.850"	5.140"	2.200"



P-Series fitting to be used only for P-Series pipe.



Male Swage Swivel Pipe Fittings

The APT innovative swage fitting is designed with the same proven technology as our clamshell fittings. It is compatible with APT 1 1/2", 1 3/4" and 2" single and secondary containment piping using standard NPT connection fittings. Manufactured of stainless steel, the APT swage fitting is reliable, easy to install and requires no specialized connection tees or elbows.

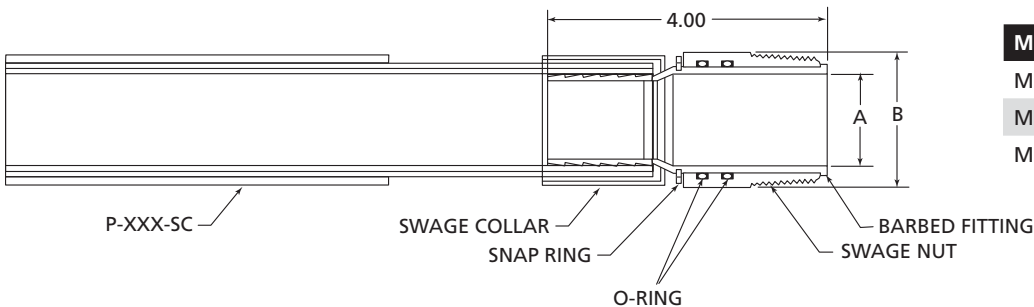


Design Highlights & Advantages

- Connection threads are compatible with 1 1/2" or standard 2" NPT pipe threads.
- Swage fittings utilize APT's proven swivel and double Viton O-ring design similar to APT clamshell fittings.
- Fittings are interchangeable with standard schedule 40 galvanized fittings.
- 100 psi rated working pressure.
- Tensile and burst strength mirrors that of APT's clamshell fittings.
- Swaged outside of containment sump easily passes through current APT Flexible Entry Boots.
- All of APT's Male Swage Swivel Pipe Fittings are UL and ULC listed.

MODEL	DESCRIPTION
MS-SW-150-150	Male Swivel installs on the end of 1 1/2" single/secondary contained pipe with 1.50" NPT
MS-SW-175-200	Male Swivel installs on the end of 1 3/4" single/secondary contained pipe with 2.00" NPT
MS-SW-200-200	Male Swivel installs on the end of 2" single/secondary contained pipe with 2.00" NPT

P-Series fitting to be used only for P-Series pipe.

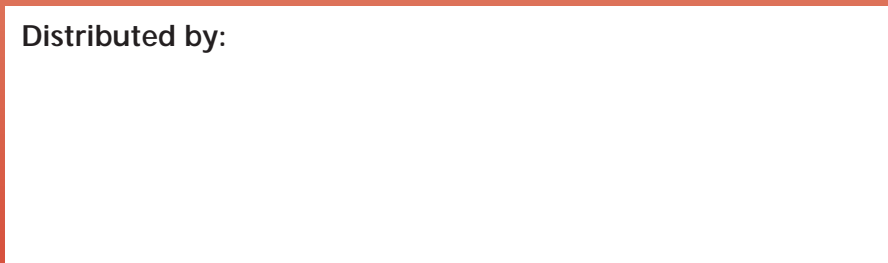


MODEL	DIM. "A"	DIM. "B"
MS-SW-150	1.390	2.000
MS-SW-175	1.635	2.500
MS-SW-200	2.030	2.875





Distributed by:



Franklin Fueling Systems

3760 Marsh Road • Madison, WI 53718, U.S.A.
Tel: +1 608 838 8786 • Fax: +1 608 838 6433
Tel: USA & Canada 1 800 225 9787 • Tel: México 001 800 738 7610