

Dualoy 3000/LCX Secondary Containment Fittings

UL-Listed nonmetallic underground contained piping system for Motor Vehicle (MV), High Blend (HB), Concentrated (CT) and Aviation and Marine (A&M) fuels

Uses and applications

Service station product, vent and vapor recovery piping
 Bulk plant terminals and fueling terminals
 Central fuel oil systems
 Marinas and marine terminals (onshore only)
 All underground piping systems requiring UL or ULC Listing for MV, HB, CT and A&M fuels
 Containment piping for all of the above
 Designed for use with pressure, vacuum or hydrostatic monitoring systems

Description

Dualoy 3000/LCX systems employ a coaxial construction for the pipe wall and specially designed fittings. The system provides complete enclosure of UL- and ULC-Listed Ameron primary piping used in product lines and vapor recovery lines from the sump at the product storage tank to the shear valve at the dispenser, and vent lines from the tank. The "LCX" contained system has been sized for close make-up and ease of installation.

Features of Ameron 3000/LCX containment systems include:

- Filament-wound, fiberglass-reinforced pipe with integral liner;
- Compact fittings dimensions to minimize trench excavation;
- Smooth exterior pipe surface that eliminates the need for special end preparation tools;
- Ready accessibility to and complete inspectability of primary fittings prior to closure of the containment;
- Complete testability during installation and at any time thereafter;
- Rapid joint makeup with pre-inserted nuts and ambient cure adhesive.

Listings



Dualoy 3000/LCX is Listed in the United States with Underwriters Laboratories for nonmetallic underground piping for motor vehicle (MV), high blend (HB), concentrated (CT) and aviation and marine (A&M) under File MH9162. Dualoy 3000/LCX pipe and fittings are also listed with Underwriters' Laboratories of Canada (File CMH 715). In Great Britain the Dualoy 3000/L system has been tested and accepted by the London Fire and Civil Defence Authority. Dualoy 3000/L has been issued a Certificate of Compliance to the Institute of Petroleum (IP) Specification by ERA Technology, Ltd.

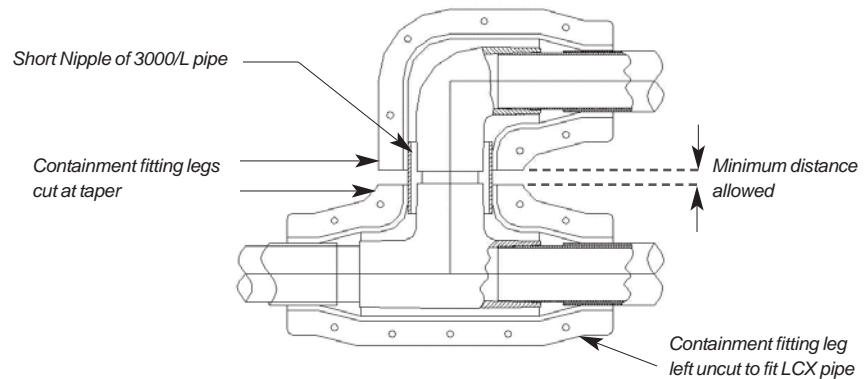
Performance



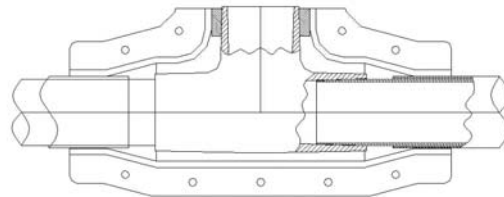
Containment pressure rated to 50 psig
 Continuous operating temperatures to 150°F (66°C)
 Individual system components may not have the same ratings as the pipe. Refer to the detailed product information for the specific components to determine the pressure rating for the system as a whole.

Piping System Features

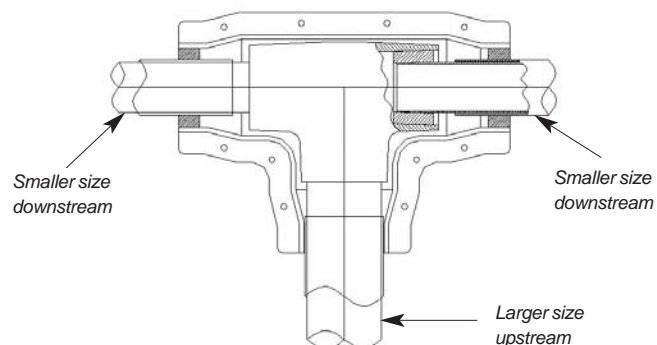
Low Profile Crossovers - Dualoy 3000/LCX clamshell fittings are specifically designed to allow the minimum distance between primary fittings to be maintained when crossovers or offsets are needed. The center portion of the fitting is designed to fit the next-size-larger single wall pipe size. When distance between primary fittings is critical, simply cut off the corresponding legs of the clamshell fittings and connect them with single wall pipe. (Reference dimension E on part drawings.)



Branch Termination for Series Installation - Dualoy 3000/LCX piping can be installed in series with the pipe coming in on one side of the sump and exiting the other side. To maintain the containment continuity through the sump, the system can be configured with a termination ring on the branch of the tee or leg of an elbow. To do this, the tapered portion of the clamshell fitting leg is cut off and a termination ring is bonded between the primary fitting and the clamshell. A bushing or pipe nipple can be bonded into the primary fitting bell as needed.



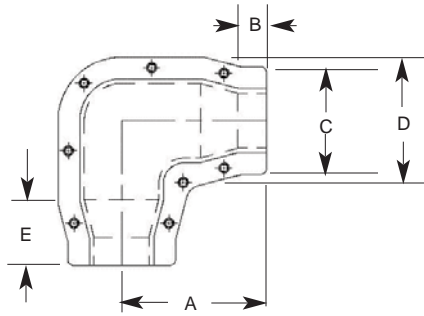
Size Reductions - For large systems where larger diameter trunk lines are used, pipe diameter reductions are easily made with the Dualoy 3000/LCX system at fittings. Single piece bushings are used in the primary fitting to reduce the primary pipe size. The containment pipe size is reduced by bonding a 2-piece reducer ring between the clamshell and the smaller pipe jacket. No cutting of clamshell fitting tapers is involved. Size reduction can be done on any fitting leg or legs (as on a tee).



Continuous Monitoring - The Dualoy 3000/LCX system has exceptional performance in continuously monitored systems. Due to its small interstitial space, it is very reliable in detecting leaks in systems monitored by pressure, vacuum or hydrostatic methods. False alarms are eliminated by the lesser sensitivity to external conditions while detection of actual leaks is increased. Consult Ameron Engineering for details and design of monitoring methods.

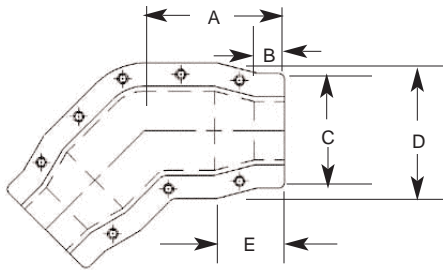
LCX fittings dimensions

90° elbows



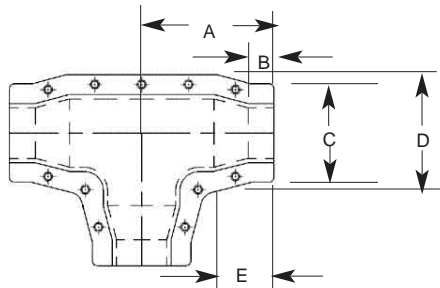
Size (in)	Size (mm)	A	B	C	D	E
2	50	6.88	1.34	5.12	6.04	3.00
3	80	7.75	1.38	6.32	7.13	3.00
4	100	8.75	1.35	7.23	9.19	3.50

45° elbows



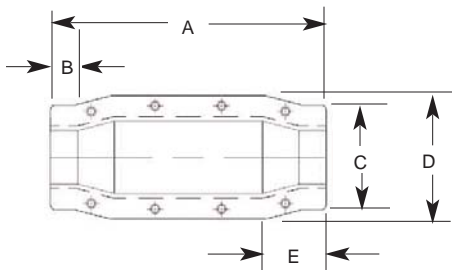
Size (in)	Size (mm)	A	B	C	D	E
2	50	6.25	1.34	5.12	6.04	3.00
3	80	6.75	1.38	6.32	7.13	3.00
4	100	7.50	1.35	7.23	9.19	3.50

Tees



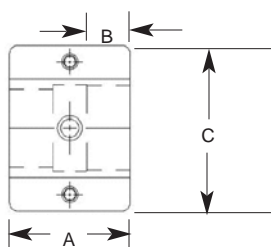
Size (in)	Size (mm)	A	B	C	D	E
2	50	6.88	1.34	5.12	6.04	3.00
3	80	7.75	1.38	6.32	7.13	3.00
4	100	8.75	1.35	7.23	9.19	3.50

Couplings



Size (in)	Size (mm)	A	B	C	D	E
2	50	13.50	1.34	5.12	6.04	3.00
3	80	12.81	1.38	6.32	7.13	3.00
4	100	12.25	1.35	7.23	9.19	3.50

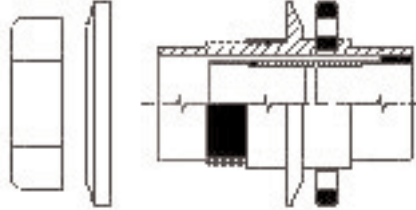
Termination



Size (in)	Size (mm)	A	B	C
2	50	3.75	1.34	5.12
3	80	3.75	1.38	6.32
4	100	3.75	1.35	7.23

Sump penetration fittings

Ameron sump penetration fittings (SPF) can be used on straight sumps. Dualoy 3000/LCX pipe can pass through or be terminated at the SPF. Ends are closed by bonding half-sections of 2-inch coupling clamshells between the SPF and the pipe jacket. Shrader valves can be supplied for testing or monitoring. SPF is not open to mid-wall of double wall sump, as provided. Field drilling of SPF body near flange can be done to open interstice between SPF and pipe to sump interstice.



Important Notice

This literature and the information and recommendations it contains are based on data reasonably believed to be reliable. However, such factors as variations in environment, application or installation, changes in operating procedures, or extrapolation of data may cause different results. Ameron makes no representation or warranty, express or implied, including warranties of merchantability or fitness for purpose, as to the accuracy, adequacy or completeness of the recommendations or information contained herein. Ameron assumes no liability whatsoever in connection with this literature or the information or recommendations it contains. Product specifications are subject to change.



FIBERGLASS - COMPOSITE PIPE GROUP - HEADQUARTERS

9720 Cypresswood Drive, Suite 325 • Houston, TX 77070 • Tel: 832-912-8282 • Fax: 832-912-9393 • www.ameron-fpg.com

Asia
Ameron (Pte) Ltd.
No. 7A, Tuas Avenue 3
Singapore 639407
Tel: 65 6861 6118
Fax: 65 6862 1302/861 7834
email: info@ameron.com.sg

Europe
Ameron B.V.
J.F. Kennedylaan 7
4191 MZ Geldermalsen
The Netherlands
Tel: +31 345 587 587
Fax: +31 345 587 561
email: info@ameron-fpg.nl

USA
P.O. Box 878
Burkburnett, TX 76354
Tel: (940) 569-1471
Fax: (940) 569-2764
email: marcom@ameronfpd.com

Centron International
P.O. Box 490
600 FM 1195 South
Mineral Wells, Texas 76068
Tel: (940) 325-1341
Fax: (940) 325-9681