

earth safe

Fuel Systems for Critical Facilities

EMERGENCY POWER FUEL SYSTEMS

C700 IntraPlex Network Interface Module

BACnet, Modbus, Metasys N2, or LON Communications



Network Interface for Emergency Generator Fuel Systems

The C700 IntraPlex – Network Interface Module integrates all fuel system components and assemblies to provide a single source for information and building system interface. The module integrates Earthsafe fuel system products as well as third party devices, and provides a variety of output protocols to the building management system.

Fuel System Integration

- Integrates information from Earthsafe OmniPlex distributed modular control panels
- Integrates Veeder Root and other leading brands of tank gauges / tank monitors
- Integrates Day Tank controls from Simplex, Pryco, Tramont, and others
- Integrates independent tank level transmitters, leak sensors, and other instruments.

Building Management System Interface

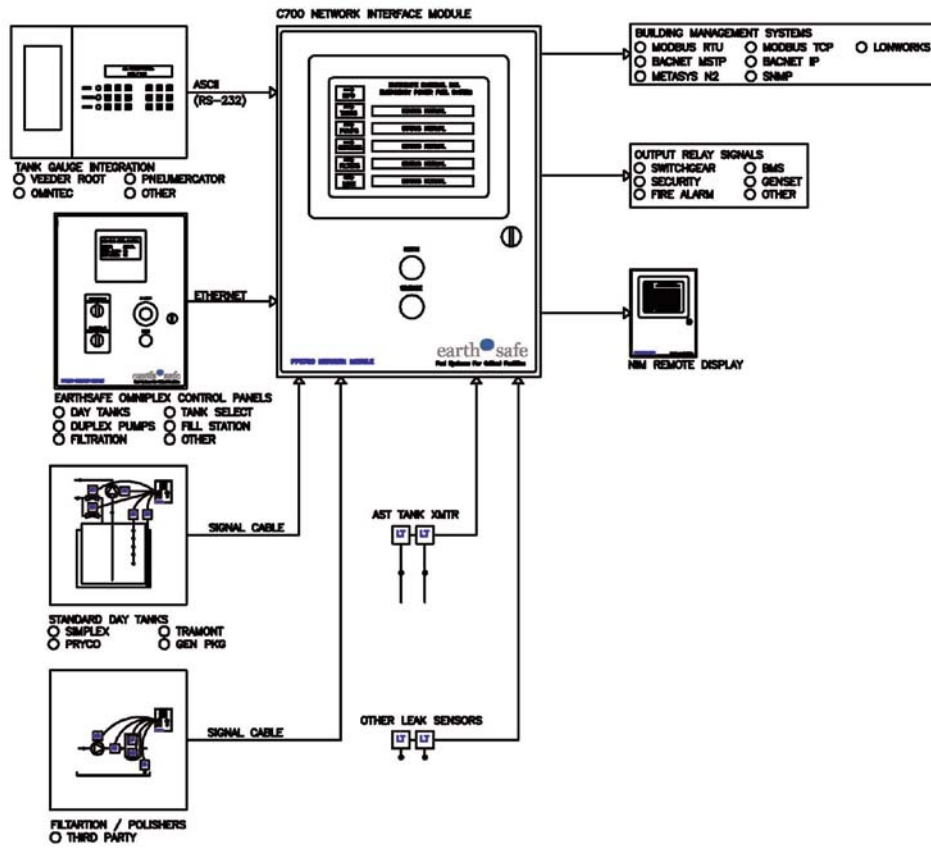
- Interface to Johnson Controls, Siemens, ALC, Honeywell, TAC, and others
- BACnet (MSTP or IP), Modbus (RTU or TCP), Metasys N2, SNMP, or LonWorks

Remote Display for Multi-Level Systems

- Provides status information at generator and boiler locations when tanks and pumps are at lower levels in high rise facilities.

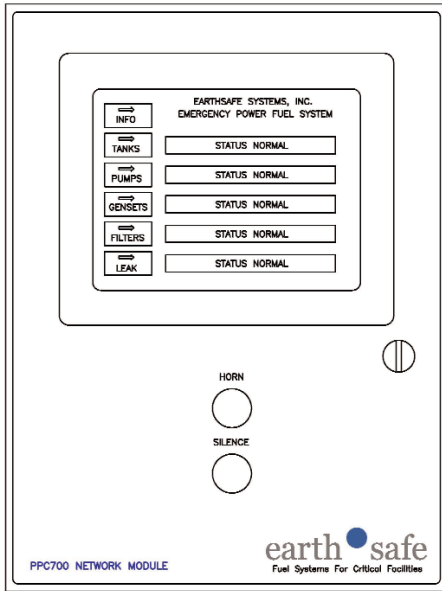
C700 IntraPlex

Network Interface Module



C700 IntraPlex

Network Interface Module



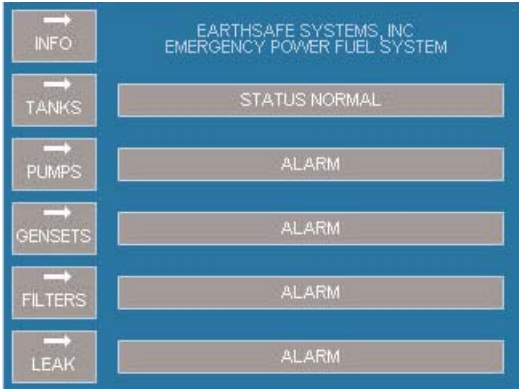
C700 Network Interface Modules

Dimensions	16" H x 12" W x 6" D
Approval	UL
Power	120 VAC / 5 A / 60 Hz Includes 24 VDC Power Source
Enclosure	NEMA 4 Color RAL 7035 (Light Gray)
Environmental	32 to 131 F (0-55 C) -20 to 130 F with heater
Communication	BACnet (MSTP or IP) Modbus (RT4 or TCP) Metasys N2 LonWorks
Processor	AB Micrologix 1100
System Integration	PowerPod Modules – up to 30 Veeder Root TLS 300/350 Direct Tank Level XMTRs Leak Sensors – up to 16 BMS Via Selected Protocol BMS Via 8-16 Program Relays
Options	50 Hz Power CE Approval Intrinsic Safety Barriers Enclosure Heater UPS Power Source
Interface	Touch Screen User Interface Grayscale – 6 Inch
Models	C700.XX Intraplex Standard C710.XX IntraPlex Remote Display C720.XX IntraPlex standard Plus VR XX=01 BACnet Protocol XX=02 Modbus Protocol XX=03 Metasys N2 Protocol XX=04 LonWorks Protocol

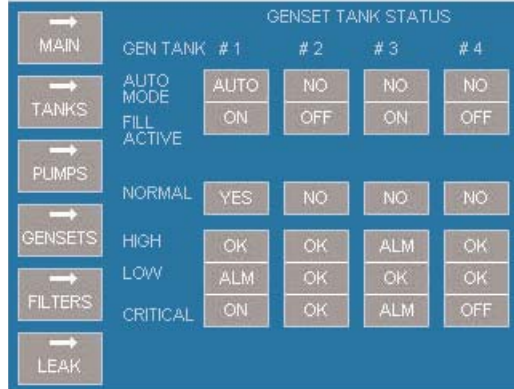
C700 IntraPlex

Network Interface Module

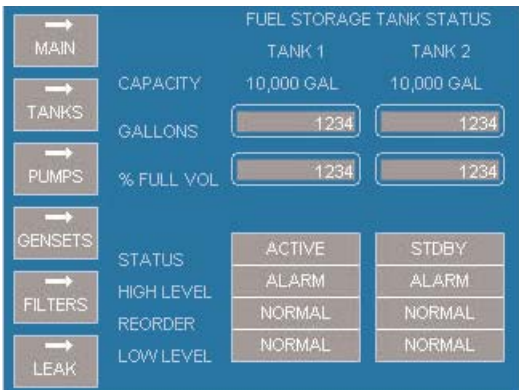
Touch Screen User Interface: C700 IntraPlex



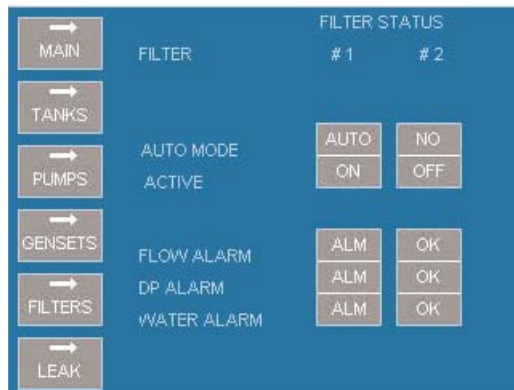
Main



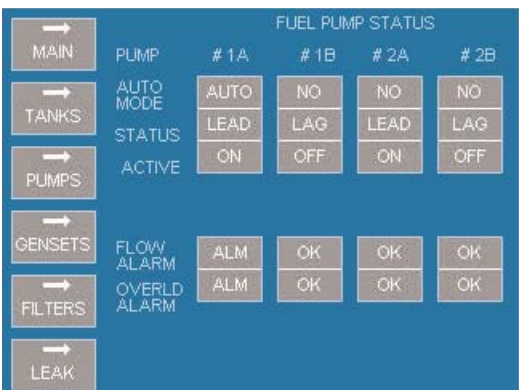
Gensets



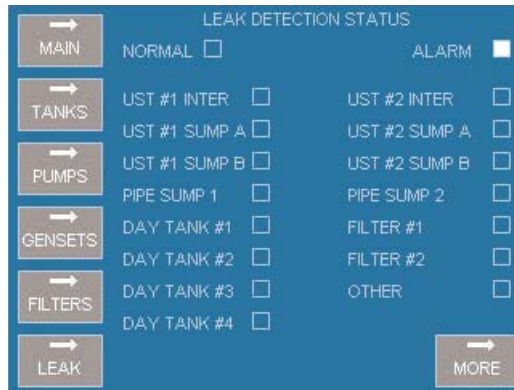
Tank



Filters



Pumps



Leak

Earthsafe Systems, Inc.
1312 Marquette Drive, Unit J
Romeoville, IL 60446

T: (630) 794-5100
F: (630) 794-5106

info@earthsafe.com
www.earthsafe.com